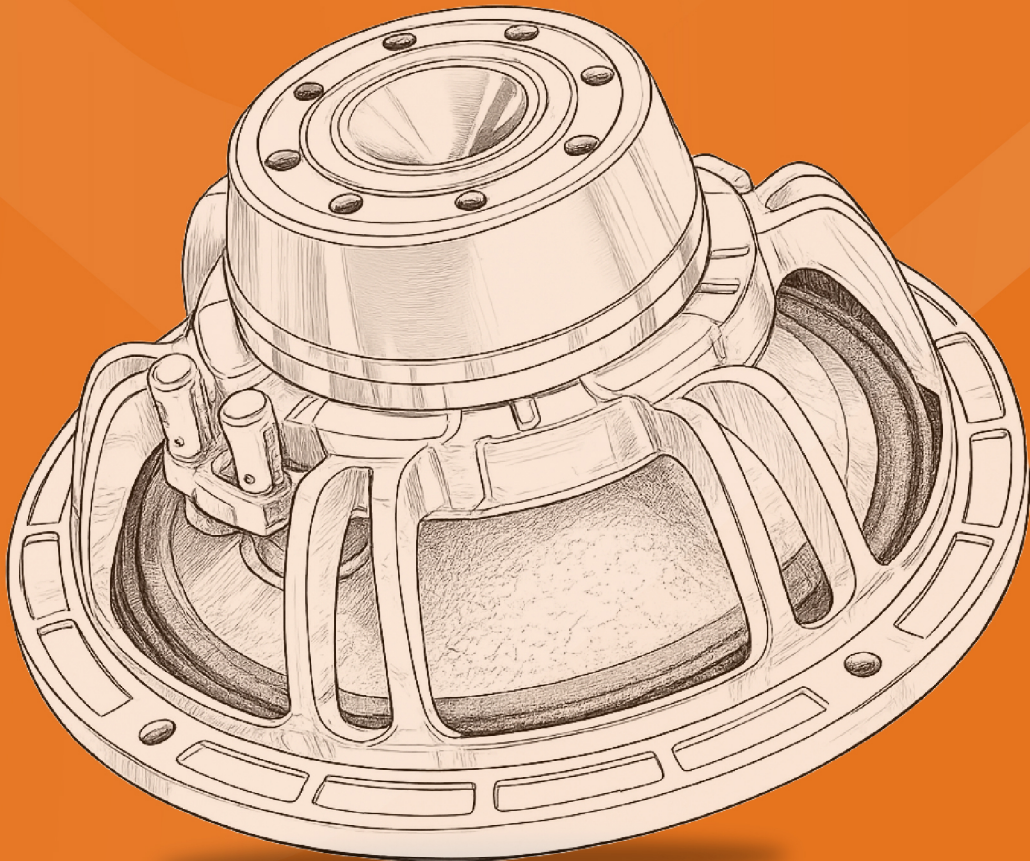


AUDIOTONE[®]
★★★★★ PROFESSIONAL

CATALOUGE

2026

Think Music **Think** Audiotone.



ATOMIC SERIES

15X1025YX



Max Power
2100W

Voice Coil
4" (99.2mm)

Sensitivity
98±2dB

Frequency Range
45Hz-3kHz

Nominal Diameter	15" (393mm)
Impedance	8Ω / 5.3Ω
Power RMS	1050W
Magnet	220*110*25/Y35
Basket Material	Aluminum
Gross Weight	12.9KG

15X1255YX



Max Power
2500W

Voice Coil
4.5" (114.5mm)

Sensitivity
98±2dB

Frequency Range
35Hz-2kHz

Nominal Diameter	15" (393mm)
Impedance	8Ω / 5.1Ω
Power RMS	1250W
Magnet	253*140*25/Y35
Basket Material	Aluminum
Gross Weight	16.5KG

18X2125YX



Max Power
4200 W

Voice Coil
127mm / 5"

Sensitivity
97 ± 2dB

Frequency Range
35Hz ~ 2000Hz

Nominal Diameter	18" / 465 mm
Impedance	8 Ω / 5.2 Ω
Power RMS	2100 W
Magnet	280*140*25/ Y35
Basket Material	Aluminum
Net Weight	20.3 Kg.

18X2530YX



Max Power
5000 W

Voice Coil
127mm / 5"

Sensitivity
97.5 ± 2dB

Frequency Range
35Hz ~ 2000Hz

Nominal Diameter	18" / 465 mm
Impedance	8 Ω / 5.2 Ω
Power RMS	2500 W
Magnet	280x140x50/ Y35
Basket Material	Aluminum
Gross Weight	26.9 Kg.

AD-18N127XY

**Max Power**

4400 W

Voice Coil

127mm / 5"

Sensitivity

98 ± 2dB

Frequency Range

35Hz ~ 2000Hz

Nominal Diameter	18" / 465 mm
Impedance	8 Ω / 5.2 Ω
Power RMS	2200 W
Magnet	120*50*15 / N45
Basket Material	Aluminum
Gross Weight	12.9 Kg.

AD-18X2335YX

**Max Power**

4700 W

Voice Coil

135mm / 5.5"

Sensitivity

98 ± 2dB

Frequency Range

30Hz ~ 1500Hz

Nominal Diameter	18" / 465 mm
Impedance	8 Ω / 5.3 Ω
Power RMS	2350 W
Magnet	300*170*25/ Y35
Basket Material	Aluminum
Gross Weight	23.4 Kg.

AD-18X2740YX

**Max Power**

5500 W

Voice Coil

135mm / 5.5"

Sensitivity

98.5 ± 2dB

Frequency Range

30Hz ~ 1500Hz

Nominal Diameter	18" / 465 mm
Impedance	8 Ω / 5.3 Ω
Power RMS	2750 W
Magnet	300*170*50/ Y35
Basket Material	Aluminum
Net Weight	30.9 Kg.

AD-18X2645YX

**Max Power**

5200 W

Voice Coil

152 mm / 6"

Sensitivity

98.5 ± 2dB

Frequency Range

30Hz ~ 1500Hz

Nominal Diameter	18" / 465 mm
Impedance	8 Ω / 5.3 Ω
Power RMS	2600 W
Magnet	330*170*25/ Y35
Basket Material	Aluminum
Gross Weight	27.8 Kg.

AD-18X3155YX

**DOUBLE
MAGNET**

**Max Power**

6200 W

Voice Coil

152mm / 6"

Sensitivity

98.5 ± 2dB

Frequency Range

30Hz ~ 1500Hz

Nominal Diameter	18" / 465 mm	Magnet	330*170*50 / Y35
Impedance	8 Ω / 5.3 Ω	Basket Material	Aluminum
Power RMS	3100 W	Gross Weight	37.5 Kg.

EXCLUSIVE SERIES

AD-15X830ES



Max Power
1600W

Voice Coil
100mm / 4"

Sensitivity
96 ± 2dB

Frequency Range
42Hz ~ 2000Hz

Nominal Diameter	15" / 402 mm
Impedance	8 Ω
Power RMS	800W
Magnet	220x110x25 mm
Basket Material	Aluminum
Net Weight	12.6 kg

AD-15X410ES



Max Power
800 W

Voice Coil
75.8mm / 3"

Sensitivity
97 ± 2dB

Frequency Range
45Hz ~ 3000Hz

Nominal Diameter	15" / 393 mm
Impedance	8 Ω / 5.6 Ω
Power RMS	400 W
Magnet	190*85*20 / Y35
Basket Material	Aluminum
Gross Weight	7.4 Kg.

AD-15X1030ES



Max Power
2000 W

Voice Coil
4" in/out

Sensitivity
96dB

Frequency Range
42Hz ~ 2000Hz

Nominal Diameter	15" / 402mm
Impedance	8 Ω
Power RMS	1000 W
Magnet	220*110*25
Basket Material	Aluminum
Net Weight	13.9 Kg.

AD-18X1240ES



Max Power
2400 W

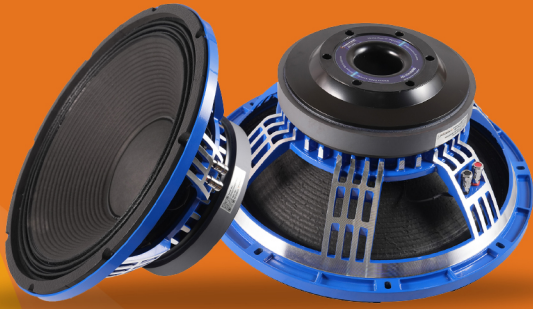
Voice Coil
100mm / 4"

Sensitivity
98 ± 2dB

Frequency Range
35Hz ~ 2000Hz

Nominal Diameter	18" / 465 mm
Impedance	8 Ω / 5.6 Ω
Power RMS	1200 W
Magnet	220*110*25 / Y35
Basket Material	Aluminum
Gross Weight	15.2 Kg.

AD-15X1020ES



Max Power

2000 W

Voice Coil

99.2mm / 4"

Sensitivity

98 ± 2dB

Frequency Range

45Hz ~ 3000Hz

Nominal Diameter	15" / 393 mm
Impedance	8 Ω / 5.6 Ω
Power RMS	1000 W
Magnet	220*110*25/ Y35
Basket	Aluminium
Net Weight	12.8 Kg.

AD-15X1250ES



Max Power

2400 W

Voice Coil

114.5mm / 4.5"

Sensitivity

97 ± 2dB

Frequency Range

35Hz ~ 2000Hz

Nominal Diameter	15" / 393mm
Impedance	8 Ω / 5.4 Ω
Power RMS	1200 W
Magnet	253*140*25/ Y35
Basket Material	Aluminum
Gross Weight	16.6 Kg.

AD-1875ES



Max Power

4400 W

Voice Coil

127mm / 5"

Sensitivity

95 ± 2dB

Frequency Range

40Hz ~ 2000Hz

Nominal Diameter	18" / 465 mm
Impedance	8 Ω / 6.8 Ω
Power RMS	2200 W
Magnet	280*140*25/ Y35
Basket Material	Aluminum
Net Weight	20.8 Kg.

AD-1895ES



Max Power

5000 W

Voice Coil

127mm / 5"

Sensitivity

96 ± 2dB

Frequency Range

40Hz ~ 2000Hz

Nominal Diameter	18" / 465 mm
Impedance	8 Ω / 6.2 Ω
Power RMS	2500 W
Magnet	280*140*50 / Y35
Basket Material	Aluminum
Gross Weight	27.4 Kg.

AD-18X1560ES

**Max Power**

3600 W

Voice Coil

115mm / 4.5"

Sensitivity

97 ± 2dB

Frequency Range

40Hz ~ 1500Hz

Nominal Diameter	18" / 465 mm
Impedance	8 Ω / 5.1 Ω
Power RMS	1800 W
Magnet	250*140*25 / Y35
Basket Material	Aluminum
Gross Weight	17.5 Kg.

AD-18X1520ES

**Max Power**

3600 W

Voice Coil

114.5mm / 4.5"

Sensitivity

98 ± 2dB

Frequency Range

35Hz ~ 2000Hz

Nominal Diameter	18" / 465 mm
Impedance	8 Ω / 5.1 Ω
Power RMS	1800 W
Magnet	253*140*30 / Y35
Basket Material	Aluminum
Gross Weight	17.1 Kg.

AD-1870ES

**Max Power**

4000 W

Voice Coil

127mm / 5"IN/OUT

Sensitivity

97 ± 2dB

Frequency Range

40Hz ~ 2000Hz

Nominal Diameter	18" / 465 mm
Impedance	8 Ω / 5.6 Ω
Power RMS	2000 W
Magnet	280*140*25/ Y35
Basket Material	Aluminum
Gross Weight	21.0 Kg.

18X1570ES

**Max Power**

3600 W

Voice Coil

4.5" IN/OUT

Sensitivity

94dB

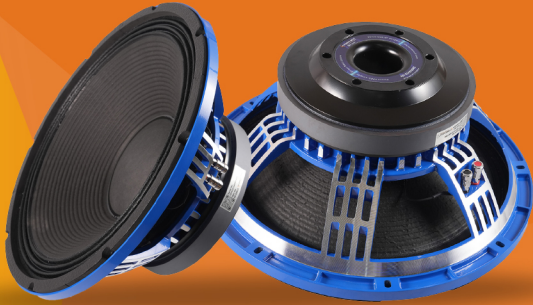
Frequency Range

36Hz ~ 1.6kHz

Nominal Diameter	18" / 465 mm
Impedance	8 Ω
Power RMS	1800 W
Magnet	250*140*25
Basket Material	Aluminum
Gross Weight	18.8 Kg.

DJ SERIES

AD-15X1020ES



Max Power

2000 W

Voice Coil

99.2mm / 4"

Sensitivity

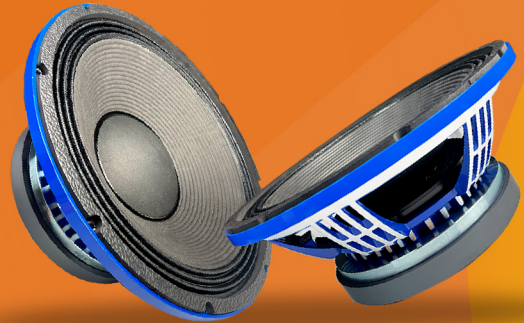
98 ± 2dB

Frequency Range

45Hz ~ 3000Hz

Nominal Diameter	15" / 393 mm
Impedance	8 Ω / 5.6 Ω
Power RMS	1000 W
Magnet	220*110*25/ Y35
Basket Material	Aluminum
Gross Weight	12.8 Kg.

AD-15X1050ES



Max Power

2400 W

Voice Coil

4.5" / 114.5mm

Sensitivity

97dB

Frequency Range

35Hz ~ 2000Hz

Nominal Diameter	15" / 393mm
Impedance	8 Ω / 5.4 Ω
Power RMS	1200 W
Magnet	253*140*25/ Y35
Basket Material	Aluminum
Gross Weight	17.9 Kg.

AD-15X410ES



Max Power

800 W

Voice Coil

75.8mm / 3"

Sensitivity

97 ± 2dB

Frequency Range

45Hz ~ 3000Hz

Nominal Diameter	15" / 393 mm
Impedance	8 Ω / 5.6 Ω
Power RMS	400 W
Magnet	190*85*20 / Y35
Basket Material	Aluminum
Gross Weight	7.4 Kg.

AD-15X510ES



Max Power

1000 W

Voice Coil

86.5mm / 3.5"

Sensitivity

98 ± 2dB

Frequency Range

45Hz ~ 3000Hz

Nominal Diameter	15" / 393 mm
Impedance	8 Ω / 4.8 Ω
Power RMS	500 W
Magnet	190*95*25 / Y35
Basket Material	Aluminum
Gross Weight	8.9 Kg.

AD-18SW115ES

**Max Power**

3600W

Voice Coil

114.5mm/ 4.5" In

Sensitivity

98 ± 2dB

Frequency Range

35Hz to 2000Hz

Nominal Diameter	18" / 465 mm
Impedance	8 Ω / 5.3 Ω
Power RMS	1800W
Magnet	250*140*25 / Y35
Basket Material	Aluminum
Gross Weight	11.0 kg

AD-18X1520ES

**Max Power**

3600 W

Voice Coil

114.5mm / 4.5"

Sensitivity

98 ± 2dB

Frequency Range

35Hz ~ 2000Hz

Nominal Diameter	18" / 465 mm
Impedance	8 Ω / 5.1 Ω
Power RMS	1800 W
Magnet	253*140*30 / Y35
Basket Material	Aluminum
Gross Weight	17.1 Kg.

DRIVER COMPONENTS

AD-10MD26

**Max Power**

800 W

Voice Coil

75.5 mm / 3"

Sensitivity

98 ± 2dB

Frequency Range

61Hz ~ 3800Hz

Nominal Diameter	10" / 262 mm
Impedance	8 Ω / 5.8 Ω
Power RMS	400 W
Magnet	180*85*20 / Y35
Basket Material	Aluminum
Gross Weight	5.4 Kg.

AD-10N76

**Max Power**

800 W

Voice Coil

75.8 mm / 3"

Sensitivity

96 ± 2dB

Frequency Range

75Hz ~ 5500Hz

Nominal Diameter	10" / 262 mm
Impedance	8 Ω / 6.8 Ω
Power RMS	400 W
Magnet	70*12 / N45
Basket Material	Aluminum
Gross Weight	3.2 Kg.

AD-12N351



Max Power

1200 W

Voice Coil

86.5mm / 3.5"

Sensitivity

97 ± 2dB

Frequency Range

46Hz ~ 3500Hz

Nominal Diameter	12" / 320 mm
Impedance	8 Ω / 5.3 Ω
Power RMS	600 W
Magnet	80*10 / N45
Basket Material	Aluminum
Gross Weight	4.9 Kg.

AD-12ND76



Max Power

1000 W

Voice Coil

75.8mm / 3"

Sensitivity

98 ± 2dB

Frequency Range

46Hz ~ 5500Hz

Nominal Diameter	12" / 310 mm
Impedance	8 Ω / 6.8 Ω
Power RMS	500 W
Magnet	25*12*12/ N45
Basket Material	Aluminum
Gross Weight	4.4 Kg.

AD-12X201FG



Max Power

4400 W

Voice Coil

127mm / 5"

Sensitivity

95 ± 2dB

Frequency Range

40Hz ~ 2000Hz

Nominal Diameter	18" / 465 mm
Impedance	8 Ω / 6.8 Ω
Power RMS	2200 W
Magnet	280*140*25/ Y35
Basket Material	Aluminum
Net Weight	20.8 Kg.

AD-12X302M



Max Power

600 W

Voice Coil

60.6mm 2.5"

Sensitivity

97 ± 2dB

Frequency Range

55Hz ~ 4000Hz

Nominal Diameter	12" / 310 mm
Impedance	8 Ω / 5 Ω
Power RMS	300 W
Magnet	169*80*20 / Y35
Basket Material	Aluminum
Gross Weight	4.8 Kg.

AD-12X403M

**Max Power**

800 W

Voice Coil

75.8 mm / 3"

Sensitivity

96 ± 2dB

Frequency Range

55Hz ~ 3000Hz

Nominal Diameter	12" / 320 mm
Impedance	8 Ω / 6.2 Ω
Power RMS	400 W
Magnet	190*90*20 / Y35
Basket Material	Aluminum
Gross Weight	7.0 Kg.

AD-12X507MB



1000 W

Voice Coil

86.5 mm / 3.5"

Sensitivity

96 ± 2dB

Frequency Range

45Hz ~ 3000Hz

Nominal Diameter	12" / 320 mm
Impedance	8 Ω / 5.8 Ω
Power RMS	500 W
Magnet	190*95*20 / Y35
Basket Material	Aluminum
Gross Weight	6.1 Kg.

AD-12X604MG

**Max Power**

1200 W

Voice Coil

100 mm / 4"

Sensitivity

97 ± 2dB

Frequency Range

45Hz ~ 4500Hz

Nominal Diameter	12" / 312 mm
Impedance	8 Ω / 5.6 Ω
Power RMS	600 W
Magnet	220*110*20 / Y35
Basket Material	Aluminum
Net Weight	9.4 Kg.

AD-1580PD AVENGER

**Max Power**

3000 W

Voice Coil

127 mm / 5"

Sensitivity

96.5 ± 2dB

Frequency Range

40Hz ~ 3000Hz

Nominal Diameter	15" / 390 mm
Impedance	8 Ω / 6.2 Ω
Power RMS	1500 W
Magnet	280*140*25 / Y35
Basket Material	Aluminum
Gross Weight	18.3 Kg.

AD-15X350MG

**Max Power**

700 W

Voice Coil

75.5mm / 3"

Sensitivity

96 ± 2dB

Frequency Range

40Hz ~ 3000Hz

Nominal Diameter	15" / 388 mm
Impedance	8 Ω / 5.6 Ω
Power RMS	350 W
Magnet	170*86*20 / Y35
Basket Material	Aluminum
Gross Weight	5.4 Kg

AD-15X401M

**Max Power**

800 W

Voice Coil

75.8mm / 3"

Sensitivity

98 ± 2dB

Frequency Range

38Hz ~ 4500Hz

Nominal Diameter	15" / 393 mm
Impedance	8 Ω / 5.3 Ω
Power RMS	400 W
Magnet	190*90*20 / Y35
Basket Material	Aluminum
Gross Weight	7.6 Kg.

AD-15X404M

**Max Power**

800 W

Voice Coil

75.5mm / 3"

Sensitivity

98 ± 2dB

Frequency Range

42Hz ~ 3000Hz

Nominal Diameter	15" / 388 mm
Impedance	8 Ω / 5.6 Ω
Power RMS	400 W
Magnet	190*85*20 / Y35
Basket Material	Aluminum
Net Weight	7.0 Kg.

AD-15X508MB

**Max Power**

1000 W

Voice Coil

86.5mm / 3.5"

Sensitivity

96 ± 2dB

Frequency Range

40Hz ~ 2500Hz

Nominal Diameter	15" / 393 mm
Impedance	8 Ω / 5.8 Ω
Power RMS	500 W
Magnet	190*95*20 / Y35
Basket Material	Aluminum
Gross Weight	6.7 Kg.

AD-15X600G



Max Power

1200 W

Voice Coil

100mm / 4"

Sensitivity

100 ± 2dB

Frequency Range

49Hz ~ 2800Hz

Nominal Diameter	15" / 395 mm
Impedance	8 Ω / 5.6 Ω
Power RMS	600 W
Magnet	220*110*25/Y35
Basket Material	Aluminum
Gross Weight	12.0 Kg.

AD-1852PD CHROME



Max Power

4000W

Voice Coil

75.8mm / 3"

Sensitivity

98 ± 2dB

Frequency Range

42Hz ~ 2000Hz

Nominal Diameter	18" / 487 mm
Impedance	8Ω / 5.6Ω
Power RMS	2000 W
Magnet	190*90*20 / Y35
Basket Material	Aluminum
Gross Weight	20.1kg

AD-1864PD AVENGER



Max Power

4800 W

Voice Coil

135mm / 5.5"

Sensitivity

97.5 ± 2dB

Frequency Range

35Hz ~ 2500Hz

Nominal Diameter	18" / 460 mm
Impedance	8 Ω / 5.8 Ω
Power RMS	2400 W
Magnet	280*140*25 / Y35
Basket Material	Aluminum
Net Weight	22.4 Kg.

AD-1878PD AVENGER



Max Power

5600 W

Voice Coil

135mm / 5.5"

Sensitivity

97.5 ± 2dB

Frequency Range

35Hz ~ 2500Hz

Nominal Diameter	18" / 460 mm
Impedance	8 Ω / 5.8 Ω
Power RMS	2800 W
Magnet	280*140*40 / Y35
Basket Material	Aluminum
Gross Weight	24.6 Kg.

AD-1882PD CHROME



Max Power

5000 W

Voice Coil

152mm / 6"

Sensitivity

96 ± 2dB

Frequency Range

50Hz ~ 1000Hz

Nominal Diameter	18" / 487 mm
Impedance	8 Ω / 5.2 Ω
Power RMS	2500 W
Magnet	330*170*30 / Y35
Basket Material	Aluminum
Gross Weight	28.7 Kg.

AD-18D1500



Max Power

3000W

Voice Coil

100mm / 4"

Sensitivity

97 ± 2dB

Frequency Range

40Hz ~ 1500Hz

Nominal Diameter	18" / 476 mm
Impedance	8 Ω / 5.6 Ω
Power RMS	1500 W
Magnet	220*110*40/ Y35
Basket Material	Aluminum
Gross Weight	17.3 Kg.

AD-18TBW100



Max Power

3000 W

Voice Coil

100mm / 4"

Sensitivity

96 ± 2dB

Frequency Range

40Hz ~ 2500Hz

Nominal Diameter	18" / 460 mm
Impedance	8 Ω / 5.2 Ω
Power RMS	1500 W
Magnet	220*110*30/ Y35
Basket Material	Aluminum
Net Weight	14.9 Kg.

AD-18X1501S



Max Power

3600 W

Voice Coil

114.5mm / 4.5"

Sensitivity

98 ± 2dB

Frequency Range

35Hz ~ 2000Hz

Nominal Diameter	18" / 460 mm
Impedance	8 Ω / 5.4 Ω
Power RMS	1800 W
Magnet	253*140*30 / Y35
Basket Material	Aluminum
Gross Weight	17.1 Kg.

AD-18X1000G



Max Power

2400 W

Voice Coil

100mm / 4"

Sensitivity

98 ± 2dB

Frequency Range

36Hz ~ 2000Hz

Nominal Diameter	18" / 465 mm
Impedance	8 Ω / 5.6 Ω
Power RMS	1200 W
Magnet	220*110*25/Y35
Basket Material	Aluminum
Gross Weight	12.9 Kg.

AD-18X1505LF



Max Power

3000 W

Voice Coil

100mm / 4"

Sensitivity

98 ± 2dB

Frequency Range

35Hz ~ 2000Hz

Nominal Diameter	18" / 461 mm
Impedance	8 Ω / 5.4 Ω
Power RMS	1500 W
Magnet	220*110*25 / Y35
Basket Material	Zinc Alloy
Gross Weight	11.9 Kg.

AD-18X2210S



Max Power

4400 W

Voice Coil

130 mm / 5.3"

Sensitivity

97 ± 2dB

Frequency Range

44Hz ~ 2000Hz

Nominal Diameter	18" / 463 mm
Impedance	8 Ω / 5.1 Ω
Power RMS	2200 W
Magnet	280*140*25 / Y35
Basket Material	Aluminum
Net Weight	20.1 Kg.

AD-2160PD CHROME



Max Power

5000 W

Voice Coil

152mm / 6"

Sensitivity

96 ± 2dB

Frequency Range

37Hz ~ 1500Hz

Nominal Diameter	21" / 568 mm
Impedance	8 Ω / 5.4 Ω
Power RMS	2500 W
Magnet	330*170*30/ Y35
Basket Material	Aluminum
Gross Weight	30.6 Kg.

AD-2182PD AVENGER



Max Power

7600 W

Voice Coil

152mm / 6"

Sensitivity

98 ± 2dB

Frequency Range

35Hz ~ 2000Hz

Nominal Diameter	21" / 550 mm
Impedance	8 Ω / 5.8 Ω
Power RMS	3800 W
Magnet	300*170*50 / Y35
Basket Material	Aluminum
Gross Weight	32.6 Kg.

AD-21NW151



Max Power

6000 W

Voice Coil

152mm / 6"

Sensitivity

97 ± 2dB

Frequency Range

30Hz ~ 1500Hz

Nominal Diameter	21" / 570 mm
Impedance	8 Ω / 5.8 Ω
Power RMS	3000 W
Magnet	145*60*15 / N45
Basket Material	Aluminium
Gross Weight	21.2 Kg.

AD-21SW152



Max Power

6400 W

Voice Coil

152mm / 6"

Sensitivity

98 ± 2dB

Frequency Range

35Hz ~ 2000Hz

Nominal Diameter	21" / 550 mm
Impedance	8 Ω / 5.3 Ω
Power RMS	3200 W
Magnet	150*50*15 / N45
Basket Material	Aluminum
Net Weight	15.2 Kg.

AD-2184PD



Max Power

7600 W

Voice Coil

152mm / 6"

Sensitivity

98 ± 2dB

Frequency Range

35Hz ~ 2000Hz

Nominal Diameter	21" / 550 mm
Impedance	8 Ω / 5.8 Ω
Power RMS	3800 W
Magnet	300*170*50 / Y35
Basket Material	Aluminum
Gross Weight	37.8 Kg.

15X825G



Max Power

1600 W

Voice Coil

4 In/Out

Sensitivity

100dB

Frequency Range

35Hz ~ 2000Hz

Nominal Diameter	15" / 390 mm
Impedance	8 Ω
Power RMS	800 W
Magnet	220*110*25mm
Basket Material	Aluminum
Gross Weight	133 Kg.

AD-1886PD Pro



Max Power

6000 W

Voice Coil

6 In/Out

Sensitivity

96dB

Frequency Range

35Hz ~ 2000Hz

Nominal Diameter	18" / 487 mm
Impedance	8 Ω
Power RMS	3000 W
Magnet	330*170*30mm
Basket Material	Aluminum
Gross Weight	32.1 Kg.

AD-15X1150SR



Max Power

2300W

Voice Coil

4" (99.2mm)

Sensitivity

98±2dB

Frequency Range

45Hz-3kHz

Nominal Diameter	15" (393mm)
Impedance	8Ω / 5.3Ω
Power RMS	1150W
Magnet	220*110*25/Y35
Basket Material	Aluminum
Gross Weight	12.8KG

AD-15X650M



Max Power

1300W

Voice Coil

4" (100mm)

Sensitivity

96

Frequency Range

49Hz-2kHz

Nominal Diameter	15"/395mm
Impedance	8Ω
Power RMS	650W
Magnet	220*110*25
Basket Material	Aluminum
Net Weight	12KG

AD - 2166PD PRO



Max Power

6000 w

Voice Coil

6 In/Out

Sensitivity

96dB

Frequency Range

35Hz ~ 2000Hz

Nominal Diameter	21" / 568 mm
Impedance	8 Ω
Power RMS	3000 W
Magnet	330*170*30mm
Basket Material	Aluminum
Gross Weight	35.9 Kg.

AD-1856PD Pro



Max Power

4800 W

Voice Coil

5 In/Out

Sensitivity

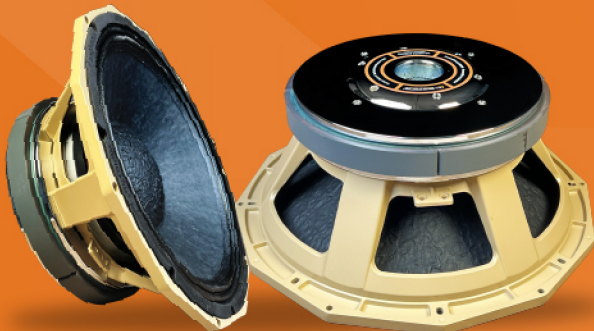
98dB

Frequency Range

35Hz ~ 2000Hz

Nominal Diameter	18" / 487 mm
Impedance	8 Ω
Power RMS	2400 W
Magnet	280*140*25mm
Basket Material	Aluminum
Gross Weight	23.6Kg.

AD-1885PD CHROME



Max Power

5600W

Voice Coil

6" In/Out Inch

Sensitivity

96 db

Nominal Diameter

18"/487 Inch/mm

Impedance	8 Ω
Power RMS	2800W
Magnet	330*170*30 MM
Basket Material	Aluminum
Gross Weight	32.1 KG

AD-1588PD AVENGER



Max Power

3600W

Voice Coil

5" In/Out

Sensitivity

95 db

Nominal Diameter

15" / 390Inch/MM

Impedance	8 Ω
Power RMS	1800W
Magnet	280 × 140 × 25mm
Gross Weight	21KG
Frequency	47Hz ~ 1.8KHz

FERRITE DRIVER

750K



Mag. Material

Strontium Ferrite
Y35

Voice Coil

74.5mm/ 3" CCAR

Sensitivity

108±2db

Frequency Range

800Hz-20KHz

Throat Diameter	50mm/ 2 Inch
Impedance	8Ω/6.2Ω
Watts (RMS)	120w

850K



Mag. Material

Strontium Ferrite
Y35

Voice Coil

74.5mm/ 3" CCAR

Sensitivity

108 ±2db

Frequency Range

800Hz-20KHz

Throat Diameter	50mm/ 2 Inch
Impedance	8Ω/6.2Ω
Watts (RMS)	120w

AD-7245



Mag. Material

Strontium Ferrite
Y35

Voice Coil

72.5mm/3" CCAW

Sensitivity

108 ± 2db

Frequency Range

800Hz-20KHz

Throat Diameter	50mm/2 Inch
Impedance	8 Ω / 6.2 Ω
Watts (RMS)	120w

AD-850N



Mag. Material

Strontium Ferrite
V35

Voice Coil

3" (74.5mm) CCAR

Sensitivity

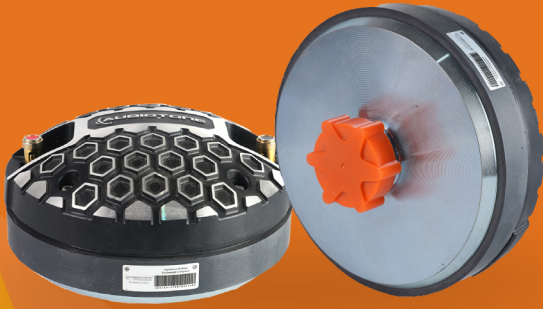
108dB ±2dB

Frequency Range

800Hz-20kHz (±3dB)

Throat Diameter	2" (50mm)
Impedance	8Ω / 6.2Ω
Watts (RMS)	140W

AD-551XLS



Mag. Material
Strontium Ferrite
Y35

Voice Coil
51.3 mm / 2"

Sensitivity
108 ± 2dB

Frequency Range
800Hz ~ 16000Hz

Throat Diameter 25 mm / 1 inch

Impedance 8 Ω / 6.5 Ω

Watts (RMS) 100 W

AD-561XLS



Mag. Material
Strontium Ferrite
Y35

Voice Coil
51.3 mm 2"

Sensitivity
108 ± 2dB

Frequency Range
800Hz ~ 16000Hz

Throat Diameter 25 mm / 1 inch

Impedance 8 Ω / 7 Ω

Watts (RMS) 100 W

751XLS



Mag. Material
Strontium Ferrite
Y35

Voice Coil
72.5 mm / 3"

Sensitivity
108 ± 2dB

Frequency Range
800Hz ~ 20000Hz

Throat Diameter 50 mm / 2 inch

Impedance 8 Ω / 6 Ω

Watts (RMS) 140 W

AD-761XLS



Mag. Material
Strontium Ferrite
Y35

Voice Coil
72.5 mm / 3"

Sensitivity
108 ± 2dB

Frequency Range
800Hz ~ 20000Hz

Throat Diameter 50 mm / 2 inch

Impedance 8 Ω / 6 Ω

Watts (RMS) 140 W

AD-7242



Mag. Material

Strontium Ferrite
Y35

Voice Coil

72.5mm 3"

Sensitivity

108 ± 2dB

Frequency Range

800Hz ~ 20000Hz

Throat Diameter	50 mm / 2 inch
-----------------	----------------

Impedance	8 Ω / 6.2 Ω
-----------	-------------

Watts (RMS)	120 W
-------------	-------

AD-750TN



Mag. Material

Strontium Ferrite
Y35

Voice Coil

74.5mm / 3"

Sensitivity

108 ± 2dB

Frequency Range

800Hz ~ 20000Hz

Throat Diameter	50 mm / 2 inch
-----------------	----------------

Impedance	8 Ω / 6.2 Ω
-----------	-------------

Watts (RMS)	140 W
-------------	-------

AD-440C



Mag. Material

Strontium Ferrite
Y35

Voice Coil

72.5 mm / 3"

Sensitivity

108 ± 2dB

Frequency Range

800Hz ~ 20000Hz

Throat Diameter	50 mm / 2 inch
-----------------	----------------

Impedance	8 Ω / 6.2 Ω
-----------	-------------

Watts (RMS)	120 W
-------------	-------

AD-450S



Mag.

Strontium Ferrite
Y35

Voice Coil

44.4mm/1.75" CCAW

Sensitivity

106 ± 2db

Frequency Range

1.5Hz-20KHz

Throat Diameter	25mm/1 Inch
-----------------	-------------

Impedance	80/60
-----------	-------

Watts (RMS)	60w
-------------	-----

AD-550C



Mag. Material

Strontium Ferrite
Y35

Voice Coil

51.3mm/ 2" CCAW

Sensitivity

108 ± 2db

Frequency Range

1.2Hz-20KHz

Throat Diameter	25.4mm/ 1 Inch
Impedance	8Ω/ 7Ω
Watts (RMS)	80w

AD-560S



Mag. Material

Strontium Ferrite
Y35

Voice Coil

51.3mm/2" CCAW

Sensitivity

108 ± 2db

Frequency Range

1.2Hz-20KHz

Throat Diameter	25.4mm/1 Inch
Impedance	8 Ω / 7 Ω
Watts (RMS)	80w

NEODYMIUM DRIVER

780TN



Diaphragm Compression
Driver Model - 3"

Impedance
8 ohm

Power RMS
120 Watts

AD-2408H



Mag. Material
Strontium Ferrite
Y35

Voice Coil
38 mm / 1.5"

Sensitivity
108 ± 2dB

Frequency Range
900Hz ~ 18000Hz

Throat Diameter	25 mm / 1 inch
Impedance	8 Ω / 6.2 Ω
Watts (RMS)	60 W

ADX-D2



Diaphragm Compression
Driver Model - 3"

Impedance
8 ohm

Power RMS
160 Watts

AD-400TN



Mag. Material
NdFeb N45

Voice Coil
44.4mm / 1.75"

Sensitivity
110 ± 2dB

Frequency Range
800Hz ~ 16000Hz

Throat Diameter	25 mm / 1 inch
Impedance	8 Ω / 6.2 Ω
Watts (RMS)	80W

AD-800TN

**Mag. Material**

NdFeb N45

Voice Coil

74.5mm / 3"

Sensitivity

108 ± 2dB

Frequency Range

800Hz ~ 20000Hz

Throat Diameter	36 mm / 1.5 inch
-----------------	------------------

Impedance	8 Ω / 6.5 Ω
-----------	-------------

Watts (RMS)	140 W
-------------	-------

SUPER PRESSURE MID DRIVER

AD-4599

**RMS Power**

450W

Voice Coil

89mm/3.5"

Sensitivity

123±2dB

Frequency Range

200Hz-9KHz

Diameter	50mm/2 Inch
----------	-------------

Impedance	8 Ω / 6.2 Ω
-----------	-------------

AD-4599EX PRO

**Max Volume**

160W/1m/35.7V
135dB

Voice Coil

200Hz ~ 8000Hz

Sensitivity

2X1W/1m 123dB

Frequency Range

200Hz ~ 8000Hz

Throat Diameter	50.8 mm / 2 inch
-----------------	------------------

Impedance	2x 16 Ω
-----------	---------

Watts (RMS)	120w
-------------	------

AD-6599EX



Power
650w

Voice Coil
2x99.2mm

Sensitivity
123dB

Frequency Range
200-7000Hz

Diameter	2"(50.8mm)
Impedance	2x16Ω
Net weight	4.6kg

AD-4599HD



Power
450 Watt

Impedance
8Ω

AMPLIFIERS



ADJ – 801

8Ω Stereo	2x680W	Input Impedance	20K Ω
4Ω Stereo	2x900W	Cross Talk	>90dB@1KHz
8Ω Bridge	1500W	Damping Factor	600
4Ω Bridge	1800W*	Rack Space	2U
Output Circuitry	class H	Net Weight	22.5Kg.
Frequency Respons	20-20KHz (±0.3dB)	Gross Weight	25.5KG
Input Sensitivity	0.775V/1.0V/1.4V		



RL – 3800AD

8Ω Stereo	2x800W	Input Impedance	20K Ω
4Ω Stereo	2x1100W	Cross Talk	>90dB@1KHz
8Ω Bridge	2200W	Damping Factor	800
4Ω Bridge	2700W*	Rack Space	2U
Output Circuitry	class H	Net Weight	24Kg.
Frequency Respons	20-20KHz (±0.3dB)	Gross Weight	27.5Kg.
Input Sensitivity	0.775V/1.0V/1.4V	2Ω Stereo	2x1400W



RL - 4600AD

8Ω Stereo	2x1000W
4Ω Stereo	2x1580W
8Ω Bridge	3110W
4Ω Bridge	3700W*
Output Circuitry	Class H
Frequency Respons	20-20KHz (±0.3dB)
Input Sensitivity	0.775V/1.0V/1.4V

Input Impedance	20K Ω
Cross Talk	>90dB@1KHz
Damping Factor	800
Rack Space	3U
Net Weight	33.5Kg.
Gross Weight	38Kg.
2Ω Stereo	2x1950W



RL-5700AD

8Ω Stereo	2x1200W
4Ω Stereo	2x1950W
8Ω Bridge	3750W
4Ω Bridge	4650W*
Output Circuitry	class H
Frequency Respons	20-20KHz (±0.3dB)
Input Sensitivity	0.775V/1.0V/1.4V

Input Impedance	20K Ω
Cross Talk	>90dB@1KHz
Damping Factor	1000
Rack Space	3U
Net Weight	33.5Kg.
Gross Weight	38KG
2Ω Stereo	2x2400W



RL-7000AD

8Ω Stereo	2x1450W
4Ω Stereo	2x2280W
8Ω Bridge	4500W
4Ω Bridge	5300W*
Output Circuitry	Class H
Frequency Respons	20-20KHz (±0.3dB)
Input Sensitivity	0.775V/1.0V/1.4V

Input Impedance	20K Ω
Cross Talk	>90dB@1KHz
Damping Factor	1200
Rack Space	3U
Net Weight	36Kg.
Gross Weight	40Kg.
2Ω Stereo	2x2680W



RL-7800AD

8Ω Stereo	2x1850W
4Ω Stereo	2x2950W
8Ω Bridge	5800W
4Ω Bridge	7800W*
Output Circuitry	class H
Frequency Respons	20-20KHz (±0.3dB)
Input Sensitivity	0.775V/1.0V/1.4V

Input Impedance	20K Ω
Cross Talk	>90dB@1KHz
Damping Factor	1300
Rack Space	3U
Net Weight	44Kg.
Gross Weight	48.5KG
2Ω Stereo	2x3800W



BDT-8800AD

8Ω Stereo	4x920W
4Ω Stereo	4x1450W
8Ω Bridge	2x1800W
4Ω Bridge	2x2800W
Output Circuitry	Class H
Frequency Respons	20– 20KHz (±0.3dB)
Input Sensitivity	0.775V/1.0V/1.4V

Input Impedance	20K Ω
Cross Talk	>90dB@1KHz
Damping Factor	800
Rack Space	2U
Net Weight	27Kg.
Gross Weight	30.5Kg.



BDT-8800Pro

8Ω Stereo	4x920W
4Ω Stereo	4x1450W
8Ω Bridge	2x1800W*
4Ω Bridge	2800W
Output Circuitry	class H
Frequency Respons	20Hz-20KHz±0.5dB
Input Sensitivity	0.775V/1.0V/1.4V

Input Impedance	20kΩ / 10kΩ
Cross Talk	>65dB 80 1KHz
Damping Factor	>800
Rack Space	2U
Net Weight	28.5KG
Gross Weight	32KG
THD %	0.05%



ADT-8850

8Ω Stereo	4 × 1500W
4Ω Stereo	4 × 1680W
8Ω Bridge	2 × 1950W
4Ω Bridge	2 × 3150W*
Output Circuitry	Class D/HD
Frequency Respons	20 – 20kHz (±0.3dB)
Input Sensitivity	0.775V / 26dB / 32dB

Input Impedance	20K Ω
Cross Talk	>90dB@1KHz
Damping Factor	≥700
Rack Space	2U
Net Weight	27.5 kg
THD	0.03% @ 8Ω
S/N Ratio	≥103dB



ADMT-1602

8Ω Stereo	2x1800W
4Ω Stereo	2x2800W
8Ω Bridge	5600W
4Ω Bridge	7000W*
Output Circuitry	class H
Frequency Respons	20-20KHz+0/-1dB
Input Sensitivity	0.75V/1.0V/1.4V

Input Impedance	20K Ω
Cross Talk	≤62dB 8Ω 1KHz
Damping Factor	≥1300
Rack Space	3U
Net Weight	39.5Kg.
Gross Weight	42.5KG
2Ω Stereo	2x3500W*
THD %	0.05%@8Ω



ADMT - 1802

8Ω Stereo	2x2200W
4Ω Stereo	2x3700W
8Ω Bridge	6400W
4Ω Bridge	8200W*
Output Circuitry	Class H
Frequency Respons	20Hz-20KHz+0/-1dB
Input Sensitivity	0.75V/1.0/1.4V

Input Impedance	20K Ω
Cross Talk	≤62dB 8Ω 1KHz
Damping Factor	≥1800
Rack Space	3U
Net Weight	39.5Kg.
THD	0.05%@8Ω
2Ω Stereo	2x4050W*
Gross Weight	42.5KG



AD-9000

8Ω Stereo	2X2100W
4Ω Stereo	2x3850W
8Ω Bridge	4800W
4Ω Bridge	7100W*
Output Circuitry	class D/HD
Frequency Respons	20-20KHz+0/-1dB
Input Sensitivity	0.75V/1.0/1.4V

Input Impedance	20K Ω
Cross Talk	≤62dB 8Ω 1KHz
Damping Factor	≥3000
THD %	0.05%@8Ω
S/N Ratio	109 dB
Gross Weight	39 Kg
2Ω Stereo	2x5200W*



XH-SERIES (AD-9900)

8Ω Stereo	2X2200W
4Ω Stereo	2x3900W
8Ω Bridge	5000W
4Ω Bridge	7300W*
Output Circuitry	Class D/HD
Frequency Respons	20-190HZ+0/-1dB
Input Sensitivity	0.75V/1.0/1.4V

Input Impedance	20K Ω
Cross Talk	≤62dB 8Ω 1KHz
Damping Factor	≥3500
Rack Space	3U
Gross Weight	39 Kg
THD	0.05%@8Ω
2Ω Stereo	2x5500W*



XX 16000 AD

8Ω Stereo	2 × 4000W
4Ω Stereo	2 × 7000W
8Ω Bridge	8900W
Output Circuitry	Class D/HD
Frequency Respons	20-300KHz±0.3dB

Damping Factor	>3500
2Ω Stereo	2 × 8100W*
4Ω Bridge	14200W*



8Ω Stereo	2 × 3200W
4Ω Stereo	2 × 6200W
8Ω Bridge	7300W
4Ω Bridge	13000W*
Output Circuitry	Class D/HD
Frequency Respons	20Hz-190KHz+0/-1dB
Input Sensitivity	0.75V/1.0/1.4V

Input Impedance	20K Ω
Cross Talk	≤92dB 8Ω 1KHz
Damping Factor	≥3500
Rack Space	3U
Gross Weight	46.1 kg
THD	0.05% @ 8 Ω
2Ω Stereo	2 × 7400W*
S/N Ratio	109 dB



XX-12000AD

8Ω Stereo	2 × 2800W
4Ω Stereo	2 × 5600W
8Ω Bridge	6200W
4Ω Bridge	8900W*
Output Circuitry	Class D/HD
Frequency Respons	20Hz-300Hz (±0.3dB)
Input Sensitivity	0.775V / 1.0V / 1.5V

Input Impedance	20K Ω
Cross Talk	≤62dB 8Ω 1KHz
Damping Factor	≥3500
THD %	0.05% @ 8Ω
S/N Ratio	≥100dB
Gross Weight	45 kg
2Ω Stereo	2 × 6200W*
Rack Space	3U



XX-10200AD

8Ω Stereo	2 × 2250W
4Ω Stereo	2 X 4000W
8Ω Bridge	5400W

4Ω Bridge	7500W
Output Circuitry	Class D/HD
Frequency Respons	10–300Hz /±0.3DB



ADMT - 2202

8Ω Stereo	2 × 3200W
4Ω Stereo	2 × 4700W
8Ω Bridge	7400W

Damping Factor	≥1800
4Ω Bridge	9500W*
2Ω Stereo	2 × 5800W



6006 - AD

8Ω Stereo	4x620W
4Ω Stereo	4X910W
2Ω Bridge	2X2300W
2Ω Stereo	4X1180W
Damping Factor	900
Rack Space	1.5V

4Ω Bridge	2X1680W
Output Circuitry	Class D/PDM
Frequency Respons	20Hz – 20KHz±0.3dB
S/N Ratio	109db
THD%	0.02%
Net Weight	12.8kg

CROSSOVER



AD-234XS

Input Connectors	XLR
Input Type	Electronically balanced/unbalanced, RF filtered
Input Impedance	Balanced >50k ohm, unbalanced >25k ohm
Max Input	>+22dBu balanced or unbalanced
CMRR	>40dB, typically >55dB at 1kHz
Output Connectors	XLR
Output Impedance	Balanced 60 ohm, unbalanced 30 ohm
Max Output	>+21dBu balanced/unbalanced into 2k ohms or greater
Bandwidth	20Hz to 20kHz, +/-0.5dB
Frequency Response	< 3 Hz to > 90 kHz, +0/-3 dB
Signal to Noise Ratio	Ref: +4 dBu, 22 kHz measurement bandwidth
Dynamic Range	> 106 dB, unweighted, any output
THD+Noise	< 0.004% at +4 dBu, 1 kHz; < 0.04% at +20 dBu, 1 kHz
Crossover Frequencies	Low/Mid: 45 to 960 Hz or 450 Hz to 9.6 kHz (x10 setting); Low/High: 45 to 960 Hz or 450 Hz to 9.6 kHz (x10 setting); Mid/High 450Hz to 9.6kHz (x10 setting)
Operating Voltage	230 VAC 50/60Hz
Net Weight	1.8 Kg.
Gross Weight	2.6 Kg.



AD-201DiSi

2 In / 10 Out Distribution	Input Imp: 50kΩ(Bal), 25kΩ(unbal)
Stereo/Mono Input Option	Output Imp: 220Ω(Unbal)
Individual Output Gain Control	Freq Responce: 0.35Hz-220Hz (+0/-3dB)
XLR/TRS Combo Inputs	SNR: >100Bu(22Hz-22kHz)
XLR/TRS Combo Outputs	THD:0.04%@4dBu,1kHz
Ultra-Low Harmonic Distortion	



SR462-AD

Dual 31 Band Graphic Equalizer	1/3 Octave Bandwidth EQ Bypass switch
Subwoofer Output With Crossover	Range +12 dB or +6 dB select Option
Constant "Q" design	18 dB / octave Highpass Filter
20 Hz – 20 kHz Full band support	Signal / Clip indicator
1/3 Octave Bandwidth	
Balanced XLR - TRS input	



AD260

Input Imp.	40k Ohm	Dynamic Range	10 dB / >107dB
Frequency	20Hz - 20kHz, +/-0.5	Max Input	+30dBu+30 Position
Max Output	+22dBu		



SR - 430QX

Dual 15-Band EQ	• 20mm faders • Input Impedance: 40k Ω (Bal), 20k Ω (Unbal)
• Constant Q Design	• Max Output: +21 dBu (Bal/Unbal)
• 50Hz Low-Cut, 12dB/Oct	• THD: 0.006% @1kHz
• Balanced XLR In/Out	• S/N Ratio: >90 dB (ref. 0.0775Vrms)
lass="yoast-text-mark" />> Balanced 1/4In, Impedance-Balanced Out	• Switching: FET In/Out & Filter
• ISO 2/3 Octave Centers	

DJ MIXER



DDJ-3

FEATURES

- Replaceable crossfader with reverse and normal slope controls
- Two switchable phono/line inputs plus one more dedicated line input giving a total of 5 inputs
- Master and Booth Outputs and three band EQ on each channel
- Balanced XLR and Unbalanced RCA Outputs
- USB 2.0 in USB version

FEATURES

- 6 MONO and XLR inputs and 2 stereo inputs
- Selectable 48V phantom power supply in each channel
- Equipped with PAD and MUTE button in each channel
- High, Mid, Low EQ adjustments in each channel
- Two AUX output
- 7 bands EQ in stereo main output
- Multi-functional Mp3
- Equipped with High and Low EQ adjustments in Mp3
- Built-in Soundcard function with PC & Phone recording
- 32 BIT effector with 24 kinds of DSP + Analog Effect
- Equip with EQ IN to turn On/Off to main output
- 60 mm fader
- FX to AUX



RA-8



M5 PRO

FEATURES

- Three channels with three-band rotary EQ and gain controls
- Phono/line and switchable RCA inputs for connecting CD players, digital music players, and turntables
- 1/4*(6.3mm)microphone input for performing,MCing, and making announcements
- 1/4"(6.3 mm)stereo headphone output for cueing and auditioning mixes
- Mic channel with dedicated two-band rotary EQ and gain controls
- Stereo RCA outputs to connect an amplifier, powered speakers, or another mixer
- Six-segment LED display for real-time visual monitoring
- PFL control for toggling between master and PFL metering
- Replaceable crossfader with reverse and slope controls
- XLR Balanced Stereo output for Professional Amplifier, Powered speaker, Another Mixer

FEATURES

- 10 MONO and XLR inputs and 2 stereo inputs
- High, Mid, Low EQ adjustments in each channel
- Two AUX output
- 7 bands EQ in stereo main output
- Multi-functional Mp3
- 60 mm fader
- Built-in Soundcard function with PC & Phone recording
- Selectable 48V phantom power supply in each channel
- Equipped with PAD and MUTE button in each channel
- Equipped with High and Low EQ adjustments in Mp3
- 32 BIT effector with 24 kinds of DSP + Analog Effect
- Equip with EQ IN to turn On/Off to main output



RA-12

FEATURES

- 14 MONO and XLR inputs and 2 stereo inputs
- High, Mid, Low EQ adjustments in each channel
Two AUX output
- 7 bands EQ in stereo main output
Multi-functional Mp3
- 60 mm fader
- Built-in Soundcard function with PC & Phone recording
- Selectable 48V phantom power supply in each channel
- Equipped with PAD and MUTE button in each channel
- Equipped with High and Low EQ adjustments in Mp3
32 BIT effector with 24 kinds of DSP + Analog Effect
- Equip with EQ IN to turn On/Off to main output



RA-16



EXENT-16AD

FEATURES

- 12 MONO and XLR inputs, 4 stereo inputs.
- Each output signal strength with LED display
- With PAD/LOW CUT button on each channel.
- Freestanding 48V power switch on each channel.
- With FREQ function adjustments on each channel
- MUTE button with LED display on each channel.
- Monitor button with LED display on each channel. Double 99 DSP effectors
- 100 MM fader:
- ST input channels with three segments EQ adjustments and gain control.
- Eight AUX outputs (With PRE / POSRT FADER selection).
- One of ST channel's signal can be sent to AUX outputs.
- FX TO AUX.
- AUX outputs with LED display.
- With soundcard function OTG port, connect with PC or PHONE.
- MP3 player with bluetooth and recording function.
- Stereo output and four group outputs.
- Side panel with LED display.

FEATURES

● 20 MONO and XLR inputs, 4 stereo inputs.
● Each output signal strength with LED display.
● With PAD/LOW CUT button on each channel.
● Freestanding 48V power switch on each channel.
● With FREQ function adjustments on each channel.
● MUTE button with LED display on each channel.
● Monitor button with LED display on each channel
● Double 99 DSP effectors.
● 100 MM fader
● ST input channels with three segments EQ adjustments and gain control.
● Eight AUX outputs(With PRE /POST FADER selection).
● One of ST channel's signal can be sent to AUX outputs
● FX TO AUX.
● AUX outputs with LED display.
● With soundcard function OTG port ,connect with PC or PHONE
● MP3 player with bluetooth and recording function
● Stereo output and four group outputs.
● Side panel with LED display.



EXENT-24AD

FEATURES

● Number of Channels- 6
● Product Dimensions- 7D x 22.7W x 24.5H Centimeters
● Item Weight - 1.65 Kilograms
● Connectivity Technology- Auxiliary, Bluetooth, USB
● Power Source- Coded Electric
● Versatile 6-Channel Audio Mixer : Mix 4 mono mic /XLR/line inputs + 2 stereo channel—perfect as a compact DJ mixer, small studio mixer, or for live sound setups.
● Bluetooth & MP3 Integration : Stream audio wirelessly from smartphones or play MP3s via USB—ideal for any digital audio player or portable DJ console.
● 99 Built-in DSP Effects : Customize your sound with 99 digital effects—enhance vocals, instruments, or DJ sets with studio-grade audio processing.
● 48V Phantom Power for Mics :Power condenser micro -phones with built-in phantom power—great for podcasting, live vocals, and professional studio recording.
● USB & PC Recording Support : Record sessions directly to USB drives or your computer—use it as a sound card audio interface for recording studio quality.



PXR-6AD

M6 USB



FEATURES

- Four input channels, each with gain, three-band EQ, and LED metering USB
- Computer connection for playing and recording with Mac or PC
- Play music from music-player software
- Record your mix to your computer
- Multiple phono, line, and mic inputs
- Dedicated XLR mic channel and additional mic input on channel 4
- Replaceable crossfader with slope control
- Assign any channel to either side of the crossfader
- Class Compliant: this product is immediately compatible with every current and future
- Version of Mac OS X and iOS and with Windows (98SE and up) operating systems.



ATOM - 4

FEATURES

●	KEY FEATURES :&amp;amp;amp;amp;amp;amp;amp;lt;br />DUAL
●	BLUETOOTH CONNECTIVITY: The ATOM 4 comes equipped with dual Bluetooth, allowing users to connect two devices simultaneously and mix music wirelessly from smartphones, tablets, or other Bluetooth-enabled devices
●	.4-CHANNEL MIXER: Each channel has individual faders, EQ controls (low, mid, high), and gain knobs, allowing for detailed mixing of multiple sound sources.
●	USB INPUTS: The crossfader features assignable channels and includes slope adjustment for customizing the transition between tracks.
●	MULTIPLE INPUT TYPES: The ATOM 4 supports multiple RCA inputs for connecting external audio devices such as turntables or CD players.

DEDICATED SUBWOOFER CONTROL:<br class="yoast-text-mark" />>On the master output section, there is a subwoofer control knob, enabling direct tuning and gain control over the subwoofer output for enhanced bass performance.
●	BALANCED OUTPUTS:
The mixer provides balanced XLR outputs, ensuring clean audio transmission to speakers, which is crucial for professional use. CUE AND HEADPHONE MONITORING: Headphone monitoring options are available with mix/split cue functionality, allowing DJs to preview specific channels in advance of mixing.
●	CROSSFADER: Three USB inputs allow for direct integration with digital devices such as laptops, USB drives, or MIDI controllers.

XLR MICROPHONE INPUTS:

The ATOM 4 includes at least one XLR microphone input for high-quality vocal or announcement integration.

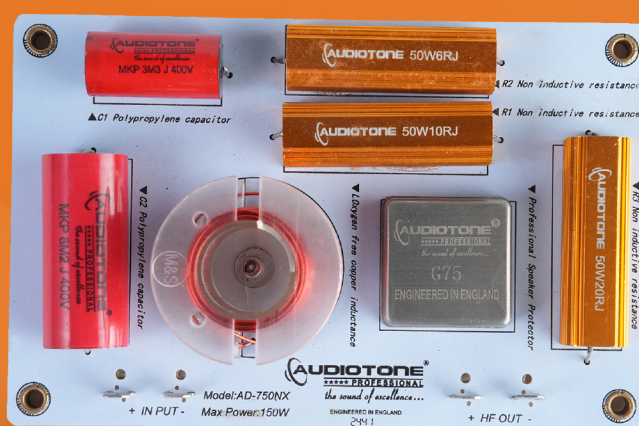
NETWORK



AD-450NW

General Information	1-Way
Output Impedance	8 Ω / 4 Ω
Crossover Frequency	3000 Hz
Slope	12dB / Oct

RMS Power	100 W
Suitable for HF	1 inch, 1.4 inch
Dimensions	100*160*30 mm
Weight	0.199 Kg



AD-750NX

General Information	1-Way
Output Impedance	8 Ω / 4 Ω
Crossover Frequency	2500 Hz
Slope	12dB / Oct

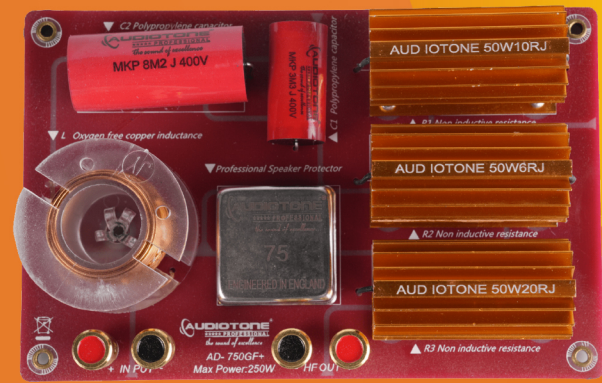
RMS Power	150 W
Suitable for HF	1.4 inch, 2 inch
Dimensions	100*160*30 mm
Weight	0.199 Kg



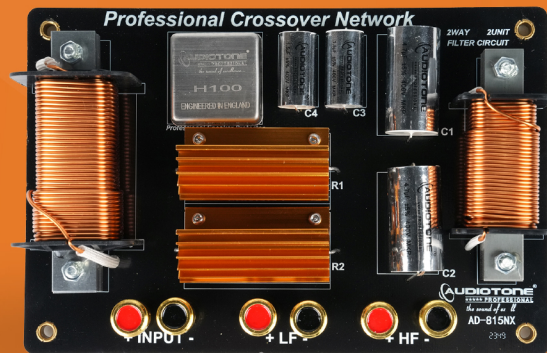
450 GF+

2-way passive crossover network
 Max Power Handling: 150W
 Compatibility: Suitable for 8 ohms HF drivers only
 Filtering: 18 dB/Octave slope on HF
 Features: Includes professional protection circuitry for the high-frequency component
 Key Components Visible
 C1 & C2: Polypropylene capacitors (8.2uF/400V and C1 (3.3uF/400V)
 L: Oxygen-free copper inductance (0.32mH)
 R1 (50W10RJ), R2 (50W20RJ), and R3 (50W6RJ)
 Protection: Professional speaker protector circuitry

Type: 1-Way Passive Crossover Network
 Max Power Handling: 250W
 Impedance: Suitable for 8 Ohm HF drivers only
 Slope: 18 dB/Octave slope on HF
 Features:
 Professional protection circuit for the HF driver
 Uses C2 Polypropylene capacitors (8.2uF/400V) and C1 (3.3uF/400V)
 Features an oxygen-free copper inductor (0.32mH)
 Includes non-inductive resistances R1 (50W10RJ), R2 (50W20RJ), and R3 (50W6RJ)



750GF+



AD - 815NX

Crossover Network	2-Way
Output Impedance	8Ω / 4Ω

RMS Power	150W
Crossover Frequency	2500 Hz
Octave Slope	2dB

MICROPHONES



UHF-450AD

Mute control	Noise Lock
Frequency Response	80Hz 18kHz
Frequency Stability	+/- 0.006%
S/N Ratio	>97dB
Total Harmonic Distor	< 0.02 % @ 1 kHz

Receiving Sensitivity	-80dBm
Operating range	100 meter
Resonance Interference Rate	54 dB
False Image Interference Rate	80dB



UHF-600AD

Carrier Frequency	UHF 440-960MHz
Channels Total	200
Oscillation Mode	IC
T.H.D	<0.5%
Sensitivity	2.0uV
Frequency	35Hz-20KHz±3dB
S/N Ratio	>90dB
Operation Distance	>100m
Power Supply	DC14-22V 500mA
Audio Output Jack	1*6.3mm/2*XLR

Receiver Type	Antenna Diversity
size	210*206*48mm
Transmission Power	10mW or 5mW
Modulation Mode	IC
Battery Type	2*AA
Spurious Rejection	>50dB
Frequency Response	60Hz-15KHz±3dB
Product Size	φ52*245mm
S/N Ratio	>90dB
Dynamic Range	>110dB



UHF-950AD

Carrier Frequency	UHF 440-960MHz
Channels Total	200
Oscillation Mode	IC
T.H.D	<0.5%
Sensitivity	2.0uV
Frequency	35Hz-20KHz
S/N Ratio	>90dB
Operation Distance	200m
Power Supply	DC14-18V 500mA
Audio Output Jack	1*6.3mm/2*XLR

Receiver Type	Antenna Diversity
Size	420*190*43mm
Transmission Power	10mW or 5mW
Modulation Mode	IC
Battery Type	2*AA
Spurious Rejection	>50dB
Frequency Response	<75KHz
Product Size	φ55*258mm/φ49.5*255mm
S/N Ratio	>90dB
Dynamic Range	>100dB

LINE ARRAY



AD-12X3LA

Maximum SPL	132dB peak
Frequency Response	45Hz-20kHz (±3dB)
Power Handling	1600W RMS
Sensitivity	99dB (1W/1m)
Nominal Impedance	4Ω (Passive)
LF Drivers	2×12" Neodymium
HF Drivers	2×3" Titanium Diaphragm
Dimensions (H×W×D)	900×360×450mm

Finish	Textured Polyurea Coating
Enclosure Material	Baltic Birch Plywood
Net Weight	36.8kg (81 lbs)
Gross Weight	39.9kg (88 lbs)
Rigging	Integrated Flyware Points
Input	Dual Neutrik NLA4MPR SpeakON
Output	Loop-Through SpeakON



ADX-20

Maximum SPL	132dB peak
Response	45Hz-18kHz (±3dB)
Peak Power	950W RMS
Coverage Pattern	100° (H) × 15° (V)
Compression Driver	2" (3.0" voice coil)
Crossover	1800Hz bi-amp
DSP Controls	Cluster, HF Curve
Limiter Type	Soft Clipping

Width	705mm (27.7")
Depth	445mm (17.5")
Height	294mm (11.5")
Weight	29kg (64lbs)
Cabinet Material	Sound-Grade
Power Supply	1200W Switching
HF Amplifier	Class D (200W)
LF Amplifier	Class D (1000W)
Protection	Thermal / RMS Limiters

PROFESSIONAL STAGE MONITOR



STM15PRO-AD, Active

Woofer	15" (75mm Voice Coil)
RMS Power	2200W
Frequency Response	40Hz-20kHz (±3dB)
Impedance	4Ω
Sensitivity	98dB (1W/1m)
DSP Controls	EQ, Delay, Limiter, Crossover
Inputs	1/4" Line
Output	XLR Mix Out

Physical Dimensions	780×475×470mm
Net Weight	22.5 kg
Gross Weight	25.05 kg
Enclosure	PP Plastic composite
Included Accessories	Power Cable
User Manual	Optional Flying Hardware
Wireless	Bluetooth 5.0



STM15-AD, Active

Woofer	15" (75mm Voice Coil)
RMS Power	2000W
Frequency Response	45Hz-18kHz (±3dB)
Impedance	4Ω
Sensitivity	97dB (1W/1m)
DSP Controls	EQ, Delay, Limiter
Inputs	1/4" Line
Output	XLR Mix Out

Physical Dimensions	780×475×470mm
Net Weight	24 kg
Gross Weight	27.04 kg
Enclosure	PP Plastic composite
Included Accessories	Power Cable User Manual
	Optional Flying Hardware
Wireless	Bluetooth 5.0

VOICE COILS



SUPERIOR QUALITY & ATTRACTIVE PRICE

Largest range in India over 150 Models (25mm - 178mm)

100% original & imported voice coils

Suitable for higher wattage Speakers

Heat Resistance Raw material Used

As we all know Voice Coils are how important part in a loudspeaker's, but here in Audiotone we are take it very seriously. Why because we have dedicated R&D team with well-equipped modern technology for designing application oriented solutions, continuous testing & analysis which we earned in various years of distribution across the nation.

RECONE KITS



We believe customers relationship in top priority. We ensure timely delivery of Recone kits (Voice Coils, Spiders, Paper Cones etc.) after sales service with immediate replacements.

DIAPHRAGMS



Largest Range in India over 42 Models (25mm to 99mm)

100% original & imported Diaphragms

Suitable for higher wattage HF Units

Diaphragms are most complex part in HF compression driver, so we are very strict about quality of diaphragms materials such as voice coil wire, former temperature bearing capacity and high grade titanium or beryllium, to serve subsistence option as good original components for after market demands.



At Audiotone, our experienced team of designers places a high value on technical excellence, product reliability, and consistent electro-acoustical functionality. With 32 years of inspired and deliberate engineering, we have earned nationwide acclaim, particularly from the Indian sound rental community. Our commitment to performance and quality control is unwavering.


Specializing in audio components, especially loudspeaker design and distribution, Audiotone performs most of its engineering and development work in England. Our dedication to quality has established us as the premier choice for state-of-the-art high-end transducers.

We never compromise on product or sound quality, remaining steadfast in our pursuit of perfection. Audiotone is renowned for its commitment to excellence, allowing us to maintain our leading position in the audio industry.

WARNING

In the market spurious /Duplicate sub-standard Amplifiers, Microphones, H.F Drivers, Speakers, Diaphragms and Voice Coils are being passed off as **GENUINE AUDIOTONE PRODUCTS**

BE VERY CAREFUL

- Obtain your requirements from AUTHORISED AUDIOTONE DEALERS & DISTRIBUTORS only.
- Insist on seeing the AUTHORISED DEALER CERTIFICATE &  'TRADE MARK'.
- Manufacture & sale of Spurious/Duplicate Products is illegal & Punishable under law.

Rampura Road, Dadabari, Sanganer, Jaipur - 302029 (India)
info@audiotone.co.in, www.audiotone.co.in

Scan to download
product catalog



Authorized Dealer