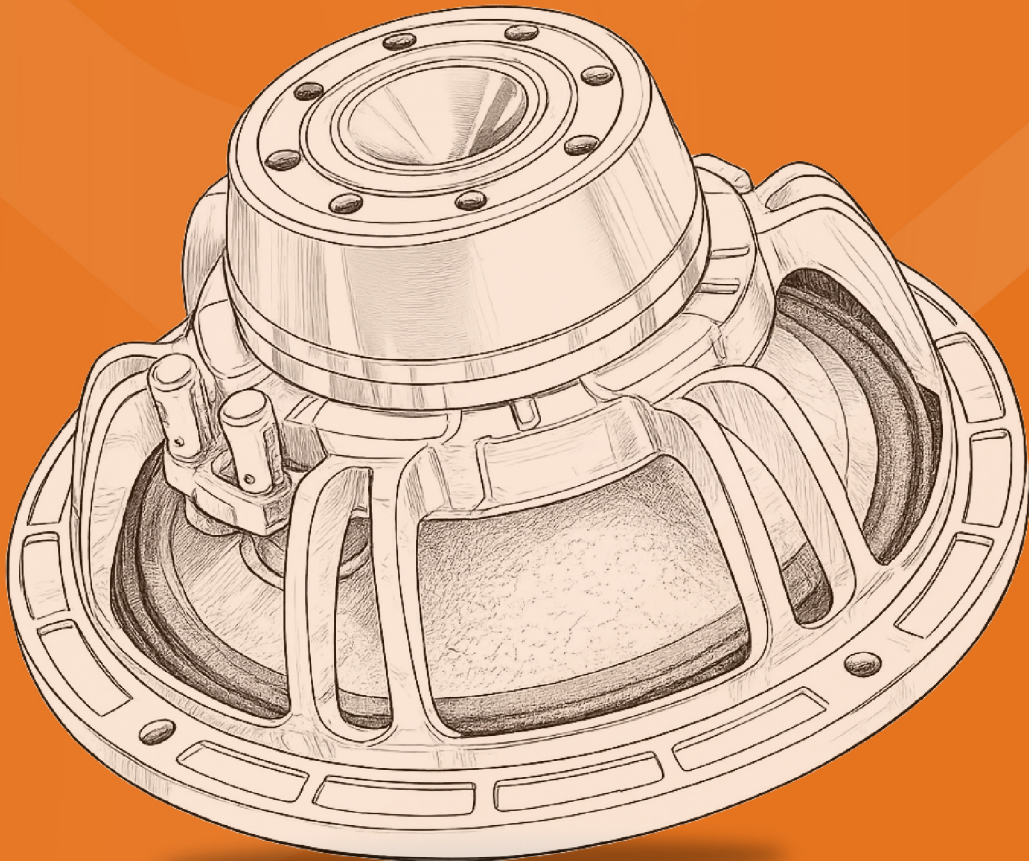




CATALOGUE

2026

Think Music **Think** Audiotone.



ATOMIC SERIES

15X1025YX



Max Power
2100W

Voice Coil
4" (99.2mm)

Sensitivity
98±2dB

Frequency Range
45Hz-3kHz

| | |
|------------------|----------------|
| Nominal Diameter | 15" (393mm) |
| Impedance | 8Ω / 5.3Ω |
| Power RMS | 1050W |
| Magnet | 220*110*25/Y35 |
| Basket Material | Aluminum |
| Gross Weight | 12.9KG |

15X1255YX



Max Power
2500W

Voice Coil
4.5" (114.5mm)

Sensitivity
98±2dB

Frequency Range
35Hz-2kHz

| | |
|------------------|----------------|
| Nominal Diameter | 15" (393mm) |
| Impedance | 8Ω / 5.1Ω |
| Power RMS | 1250W |
| Magnet | 253*140*25/Y35 |
| Basket Material | Aluminum |
| Gross Weight | 16.5KG |

18X2125YX



Max Power
4200 W

Voice Coil
127mm / 5"

Sensitivity
97 ± 2dB

Frequency Range
35Hz ~ 2000Hz

| | |
|------------------|-----------------|
| Nominal Diameter | 18" / 465 mm |
| Impedance | 8 Ω / 5.2 Ω |
| Power RMS | 2100 W |
| Magnet | 280*140*25/ Y35 |
| Basket Material | Aluminum |
| Net Weight | 20.3 Kg. |

18X2530YX



Max Power
5000 W

Voice Coil
127mm / 5"

Sensitivity
97.5 ± 2dB

Frequency Range
35Hz ~ 2000Hz

| | |
|------------------|-----------------|
| Nominal Diameter | 18" / 465 mm |
| Impedance | 8 Ω / 5.2 Ω |
| Power RMS | 2500 W |
| Magnet | 280x140x50/ Y35 |
| Basket Material | Aluminum |
| Gross Weight | 26.9 Kg. |

AD-18N127XY



Max Power

4400 W

Voice Coil

127mm / 5"

Sensitivity

98 ± 2dB

Frequency Range

35Hz ~ 2000Hz

| | |
|------------------|-----------------|
| Nominal Diameter | 18" / 465 mm |
| Impedance | 8 Ω / 5.2 Ω |
| Power RMS | 2200 W |
| Magnet | 120*50*15 / N45 |
| Basket Material | Aluminum |
| Gross Weight | 12.9 Kg. |

AD-18X2335YX



Max Power

4700 W

Voice Coil

135mm / 5.5"

Sensitivity

98 ± 2dB

Frequency Range

30Hz ~ 1500Hz

| | |
|------------------|-----------------|
| Nominal Diameter | 18" / 465 mm |
| Impedance | 8 Ω / 5.3 Ω |
| Power RMS | 2350 W |
| Magnet | 300*170*25/ Y35 |
| Basket Material | Aluminum |
| Gross Weight | 23.4 Kg. |

AD-18X2740YX



Max Power

5500 W

Voice Coil

135mm / 5.5"

Sensitivity

98.5 ± 2dB

Frequency Range

30Hz ~ 1500Hz

| | |
|------------------|-----------------|
| Nominal Diameter | 18" / 465 mm |
| Impedance | 8 Ω / 5.3 Ω |
| Power RMS | 2750 W |
| Magnet | 300*170*50/ Y35 |
| Basket Material | Aluminum |
| Net Weight | 30.9 Kg. |

AD-18X2645YX



Max Power

5200 W

Voice Coil

152 mm / 6"

Sensitivity

98.5 ± 2dB

Frequency Range

30Hz ~ 1500Hz

| | |
|------------------|-----------------|
| Nominal Diameter | 18" / 465 mm |
| Impedance | 8 Ω / 5.3 Ω |
| Power RMS | 2600 W |
| Magnet | 330*170*25/ Y35 |
| Basket Material | Aluminum |
| Gross Weight | 27.8 Kg. |

AD-18X3155YX

**DOUBLE
MAGNET**

**Max Power**

6200 W

Voice Coil

152mm / 6"

Sensitivity

98.5 ± 2dB

Frequency Range

30Hz ~ 1500Hz

| | | | |
|------------------|--------------|-----------------|------------------|
| Nominal Diameter | 18" / 465 mm | Magnet | 330*170*50 / Y35 |
| Impedance | 8 Ω / 5.3 Ω | Basket Material | Aluminum |
| Power RMS | 3100 W | Gross Weight | 37.5 Kg. |

EXCLUSIVE SERIES

AD-15X830ES



Max Power
1600W

Voice Coil
100mm / 4"

Sensitivity
96 ± 2dB

Frequency Range
42Hz ~ 2000Hz

| | |
|------------------|---------------|
| Nominal Diameter | 15" / 402 mm |
| Impedance | 8 Ω |
| Power RMS | 800W |
| Magnet | 220x110x25 mm |
| Basket Material | Aluminum |
| Net Weight | 12.6 kg |

AD-15X410ES



Max Power
800 W

Voice Coil
75.8mm / 3"

Sensitivity
97 ± 2dB

Frequency Range
45Hz ~ 3000Hz

| | |
|------------------|-----------------|
| Nominal Diameter | 15" / 393 mm |
| Impedance | 8 Ω / 5.6 Ω |
| Power RMS | 400 W |
| Magnet | 190*85*20 / Y35 |
| Basket Material | Aluminum |
| Gross Weight | 7.4 Kg. |

AD-15X1030ES



Max Power
2000 W

Voice Coil
4" in/out

Sensitivity
96dB

Frequency Range
42Hz ~ 2000Hz

| | |
|------------------|-------------|
| Nominal Diameter | 15" / 402mm |
| Impedance | 8 Ω |
| Power RMS | 1000 W |
| Magnet | 220*110*25 |
| Basket Material | Aluminum |
| Net Weight | 13.9 Kg. |

AD-18X1240ES



Max Power
2400 W

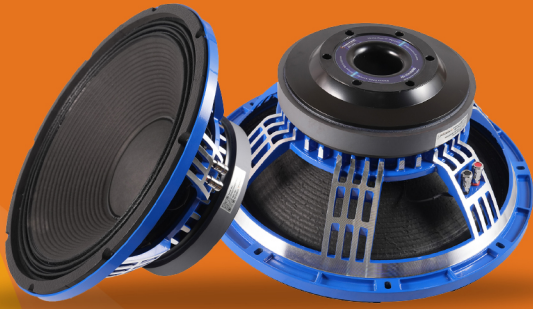
Voice Coil
100mm / 4"

Sensitivity
98 ± 2dB

Frequency Range
35Hz ~ 2000Hz

| | |
|------------------|------------------|
| Nominal Diameter | 18" / 465 mm |
| Impedance | 8 Ω / 5.6 Ω |
| Power RMS | 1200 W |
| Magnet | 220*110*25 / Y35 |
| Basket Material | Aluminum |
| Gross Weight | 15.2 Kg. |

AD-15X1020ES



Max Power

2000 W

Voice Coil

99.2mm / 4"

Sensitivity

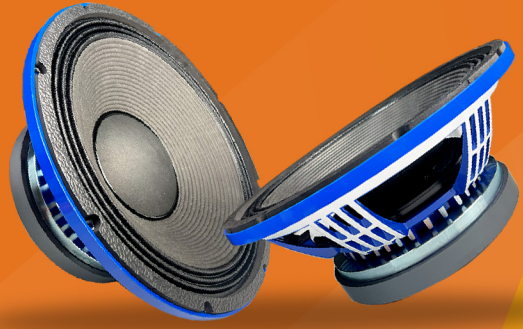
98 ± 2dB

Frequency Range

45Hz ~ 3000Hz

| | |
|------------------|-----------------|
| Nominal Diameter | 15" / 393 mm |
| Impedance | 8 Ω / 5.6 Ω |
| Power RMS | 1000 W |
| Magnet | 220*110*25/ Y35 |
| Basket | Aluminium |
| Net Weight | 12.8 Kg. |

AD-15X1250ES



Max Power

2400 W

Voice Coil

114.5mm / 4.5"

Sensitivity

97 ± 2dB

Frequency Range

35Hz ~ 2000Hz

| | |
|------------------|-----------------|
| Nominal Diameter | 15" / 393mm |
| Impedance | 8 Ω / 5.4 Ω |
| Power RMS | 1200 W |
| Magnet | 253*140*25/ Y35 |
| Basket Material | Aluminum |
| Gross Weight | 16.6 Kg. |

AD-1875ES



Max Power

4400 W

Voice Coil

127mm / 5"

Sensitivity

95 ± 2dB

Frequency Range

40Hz ~ 2000Hz

| | |
|------------------|-----------------|
| Nominal Diameter | 18" / 465 mm |
| Impedance | 8 Ω / 6.8 Ω |
| Power RMS | 2200 W |
| Magnet | 280*140*25/ Y35 |
| Basket Material | Aluminum |
| Net Weight | 20.8 Kg. |

AD-1895ES



Max Power

5000 W

Voice Coil

127mm / 5"

Sensitivity

96 ± 2dB

Frequency Range

40Hz ~ 2000Hz

| | |
|------------------|------------------|
| Nominal Diameter | 18" / 465 mm |
| Impedance | 8 Ω / 6.2 Ω |
| Power RMS | 2500 W |
| Magnet | 280*140*50 / Y35 |
| Basket Material | Aluminum |
| Gross Weight | 27.4 Kg. |

AD-18X1560ES



Max Power

3600 W

Voice Coil

115mm / 4.5"

Sensitivity

97 ± 2dB

Frequency Range

40Hz ~ 1500Hz

| | |
|------------------|------------------|
| Nominal Diameter | 18" / 465 mm |
| Impedance | 8 Ω / 5.1 Ω |
| Power RMS | 1800 W |
| Magnet | 250*140*25 / Y35 |
| Basket Material | Aluminum |
| Gross Weight | 17.5 Kg. |

AD-18X1520ES



Max Power

3600 W

Voice Coil

114.5mm / 4.5"

Sensitivity

98 ± 2dB

Frequency Range

35Hz ~ 2000Hz

| | |
|------------------|------------------|
| Nominal Diameter | 18" / 465 mm |
| Impedance | 8 Ω / 5.1 Ω |
| Power RMS | 1800 W |
| Magnet | 253*140*30 / Y35 |
| Basket Material | Aluminum |
| Gross Weight | 17.1 Kg. |

AD-1870ES



Max Power

4000 W

Voice Coil

127mm / 5"IN/OUT

Sensitivity

97 ± 2dB

Frequency Range

40Hz ~ 2000Hz

| | |
|------------------|------------------|
| Nominal Diameter | 18" / 465 mm |
| Impedance | 8 Ω / 5.6 Ω |
| Power RMS | 2000 W |
| Magnet | 280*140*25 / Y35 |
| Basket Material | Aluminum |
| Gross Weight | 21.0 Kg. |

18X1570ES



Max Power

3600 W

Voice Coil

4.5" IN/OUT

Sensitivity

94dB

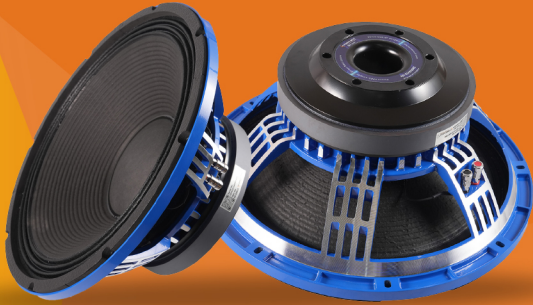
Frequency Range

36Hz ~ 1.6kHz

| | |
|------------------|--------------|
| Nominal Diameter | 18" / 465 mm |
| Impedance | 8 Ω |
| Power RMS | 1800 W |
| Magnet | 250*140*25 |
| Basket Material | Aluminum |
| Gross Weight | 18.8 Kg. |

DJ SERIES

AD-15X1020ES



Max Power

2000 W

Voice Coil

99.2mm / 4"

Sensitivity

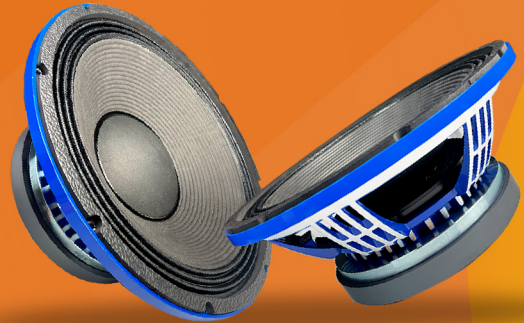
98 ± 2dB

Frequency Range

45Hz ~ 3000Hz

| | |
|------------------|-----------------|
| Nominal Diameter | 15" / 393 mm |
| Impedance | 8 Ω / 5.6 Ω |
| Power RMS | 1000 W |
| Magnet | 220*110*25/ Y35 |
| Basket Material | Aluminum |
| Gross Weight | 12.8 Kg. |

AD-15X1050ES



Max Power

2400 W

Voice Coil

4.5" / 114.5mm

Sensitivity

97dB

Frequency Range

35Hz ~ 2000Hz

| | |
|------------------|-----------------|
| Nominal Diameter | 15" / 393mm |
| Impedance | 8 Ω / 5.4 Ω |
| Power RMS | 1200 W |
| Magnet | 253*140*25/ Y35 |
| Basket Material | Aluminum |
| Gross Weight | 17.9 Kg. |

AD-15X410ES



Max Power

800 W

Voice Coil

75.8mm / 3"

Sensitivity

97 ± 2dB

Frequency Range

45Hz ~ 3000Hz

| | |
|------------------|-----------------|
| Nominal Diameter | 15" / 393 mm |
| Impedance | 8 Ω / 5.6 Ω |
| Power RMS | 400 W |
| Magnet | 190*85*20 / Y35 |
| Basket Material | Aluminum |
| Gross Weight | 7.4 Kg. |

AD-15X510ES



Max Power

1000 W

Voice Coil

86.5mm / 3.5"

Sensitivity

98 ± 2dB

Frequency Range

45Hz ~ 3000Hz

| | |
|------------------|-----------------|
| Nominal Diameter | 15" / 393 mm |
| Impedance | 8 Ω / 4.8 Ω |
| Power RMS | 500 W |
| Magnet | 190*95*25 / Y35 |
| Basket Material | Aluminum |
| Gross Weight | 8.9 Kg. |

AD-18SW115ES

**Max Power**

3600W

Voice Coil

114.5mm/ 4.5" In

Sensitivity

98 ± 2dB

Frequency Range

35Hz to 2000Hz

| | |
|------------------|------------------|
| Nominal Diameter | 18" / 465 mm |
| Impedance | 8 Ω / 5.3 Ω |
| Power RMS | 1800W |
| Magnet | 250*140*25 / Y35 |
| Basket Material | Aluminum |
| Gross Weight | 11.0 kg |

AD-18X1520ES

**Max Power**

3600 W

Voice Coil

114.5mm / 4.5"

Sensitivity

98 ± 2dB

Frequency Range

35Hz ~ 2000Hz

| | |
|------------------|------------------|
| Nominal Diameter | 18" / 465 mm |
| Impedance | 8 Ω / 5.1 Ω |
| Power RMS | 1800 W |
| Magnet | 253*140*30 / Y35 |
| Basket Material | Aluminum |
| Gross Weight | 17.1 Kg. |

DRIVER COMPONENTS

AD-10MD26

**Max Power**

800 W

Voice Coil

75.5 mm / 3"

Sensitivity

98 ± 2dB

Frequency Range

61Hz ~ 3800Hz

| | |
|------------------|-----------------|
| Nominal Diameter | 10" / 262 mm |
| Impedance | 8 Ω / 5.8 Ω |
| Power RMS | 400 W |
| Magnet | 180*85*20 / Y35 |
| Basket Material | Aluminum |
| Gross Weight | 5.4 Kg. |

AD-10N76

**Max Power**

800 W

Voice Coil

75.8 mm / 3"

Sensitivity

96 ± 2dB

Frequency Range

75Hz ~ 5500Hz

| | |
|------------------|--------------|
| Nominal Diameter | 10" / 262 mm |
| Impedance | 8 Ω / 6.8 Ω |
| Power RMS | 400 W |
| Magnet | 70*12 / N45 |
| Basket Material | Aluminum |
| Gross Weight | 3.2 Kg. |

AD-12N351



Max Power

1200 W

Voice Coil

86.5mm / 3.5"

Sensitivity

97 ± 2dB

Frequency Range

46Hz ~ 3500Hz

| | |
|------------------|--------------|
| Nominal Diameter | 12" / 320 mm |
| Impedance | 8 Ω / 5.3 Ω |
| Power RMS | 600 W |
| Magnet | 80*10 / N45 |
| Basket Material | Aluminum |
| Gross Weight | 4.9 Kg. |

AD-12ND76



Max Power

1000 W

Voice Coil

75.8mm / 3"

Sensitivity

98 ± 2dB

Frequency Range

46Hz ~ 5500Hz

| | |
|------------------|---------------|
| Nominal Diameter | 12" / 310 mm |
| Impedance | 8 Ω / 6.8 Ω |
| Power RMS | 500 W |
| Magnet | 25*12*12/ N45 |
| Basket Material | Aluminum |
| Gross Weight | 4.4 Kg. |

AD-12X201FG



Max Power

4400 W

Voice Coil

127mm / 5"

Sensitivity

95 ± 2dB

Frequency Range

40Hz ~ 2000Hz

| | |
|------------------|-----------------|
| Nominal Diameter | 18" / 465 mm |
| Impedance | 8 Ω / 6.8 Ω |
| Power RMS | 2200 W |
| Magnet | 280*140*25/ Y35 |
| Basket Material | Aluminum |
| Net Weight | 20.8 Kg. |

AD-12X302M



Max Power

600 W

Voice Coil

60.6mm 2.5"

Sensitivity

97 ± 2dB

Frequency Range

55Hz ~ 4000Hz

| | |
|------------------|-----------------|
| Nominal Diameter | 12" / 310 mm |
| Impedance | 8 Ω / 5 Ω |
| Power RMS | 300 W |
| Magnet | 169*80*20 / Y35 |
| Basket Material | Aluminum |
| Gross Weight | 4.8 Kg. |

AD-12X403M

**Max Power**

800 W

Voice Coil

75.8 mm / 3"

Sensitivity

96 ± 2dB

Frequency Range

55Hz ~ 3000Hz

| | |
|------------------|-----------------|
| Nominal Diameter | 12" / 320 mm |
| Impedance | 8 Ω / 6.2 Ω |
| Power RMS | 400 W |
| Magnet | 190*90*20 / Y35 |
| Basket Material | Aluminum |
| Gross Weight | 7.0 Kg. |

AD-12X507MB

**Max Power**

1000 W

Voice Coil

86.5 mm / 3.5"

Sensitivity

96 ± 2dB

Frequency Range

45Hz ~ 3000Hz

| | |
|------------------|-----------------|
| Nominal Diameter | 12" / 320 mm |
| Impedance | 8 Ω / 5.8 Ω |
| Power RMS | 500 W |
| Magnet | 190*95*20 / Y35 |
| Basket Material | Aluminum |
| Gross Weight | 6.1 Kg. |

AD-12X604MG

**Max Power**

1200 W

Voice Coil

100 mm / 4"

Sensitivity

97 ± 2dB

Frequency Range

45Hz ~ 4500Hz

| | |
|------------------|------------------|
| Nominal Diameter | 12" / 312 mm |
| Impedance | 8 Ω / 5.6 Ω |
| Power RMS | 600 W |
| Magnet | 220*110*20 / Y35 |
| Basket Material | Aluminum |
| Net Weight | 9.4 Kg. |

AD-1580PD AVENGER

**Max Power**

3000 W

Voice Coil

127 mm / 5"

Sensitivity

96.5 ± 2dB

Frequency Range

40Hz ~ 3000Hz

| | |
|------------------|------------------|
| Nominal Diameter | 15" / 390 mm |
| Impedance | 8 Ω / 6.2 Ω |
| Power RMS | 1500 W |
| Magnet | 280*140*25 / Y35 |
| Basket Material | Aluminum |
| Gross Weight | 18.3 Kg. |

AD-15X350MG

**Max Power**

700 W

Voice Coil

75.5mm / 3"

Sensitivity

96 ± 2dB

Frequency Range

40Hz ~ 3000Hz

| | |
|------------------|-----------------|
| Nominal Diameter | 15" / 388 mm |
| Impedance | 8 Ω / 5.6 Ω |
| Power RMS | 350 W |
| Magnet | 170*86*20 / Y35 |
| Basket Material | Aluminum |
| Gross Weight | 5.4 Kg |

AD-15X401M

**Max Power**

800 W

Voice Coil

75.8mm / 3"

Sensitivity

98 ± 2dB

Frequency Range

38Hz ~ 4500Hz

| | |
|------------------|-----------------|
| Nominal Diameter | 15" / 393 mm |
| Impedance | 8 Ω / 5.3 Ω |
| Power RMS | 400 W |
| Magnet | 190*90*20 / Y35 |
| Basket Material | Aluminum |
| Gross Weight | 7.6 Kg. |

AD-15X404M

**Max Power**

800 W

Voice Coil

75.5mm / 3"

Sensitivity

98 ± 2dB

Frequency Range

42Hz ~ 3000Hz

| | |
|------------------|-----------------|
| Nominal Diameter | 15" / 388 mm |
| Impedance | 8 Ω / 5.6 Ω |
| Power RMS | 400 W |
| Magnet | 190*85*20 / Y35 |
| Basket Material | Aluminum |
| Net Weight | 7.0 Kg. |

AD-15X508MB

**Max Power**

1000 W

Voice Coil

86.5mm / 3.5"

Sensitivity

96 ± 2dB

Frequency Range

40Hz ~ 2500Hz

| | |
|------------------|-----------------|
| Nominal Diameter | 15" / 393 mm |
| Impedance | 8 Ω / 5.8 Ω |
| Power RMS | 500 W |
| Magnet | 190*95*20 / Y35 |
| Basket Material | Aluminum |
| Gross Weight | 6.7 Kg. |

AD-15X600G



Max Power

1200 W

Voice Coil

100mm / 4"

Sensitivity

100 ± 2dB

Frequency Range

49Hz ~ 2800Hz

| | |
|------------------|----------------|
| Nominal Diameter | 15" / 395 mm |
| Impedance | 8 Ω / 5.6 Ω |
| Power RMS | 600 W |
| Magnet | 220*110*25/Y35 |
| Basket Material | Aluminum |
| Gross Weight | 12.0 Kg. |

AD-1852PD CHROME



Max Power

4000W

Voice Coil

75.8mm / 3"

Sensitivity

98 ± 2dB

Frequency Range

42Hz ~ 2000Hz

| | |
|------------------|-----------------|
| Nominal Diameter | 18" / 487 mm |
| Impedance | 8Ω / 5.6Ω |
| Power RMS | 2000 W |
| Magnet | 190*90*20 / Y35 |
| Basket Material | Aluminum |
| Gross Weight | 20.1kg |

AD-1864PD AVENGER



Max Power

4800 W

Voice Coil

135mm / 5.5"

Sensitivity

97.5 ± 2dB

Frequency Range

35Hz ~ 2500Hz

| | |
|------------------|------------------|
| Nominal Diameter | 18" / 460 mm |
| Impedance | 8 Ω / 5.8 Ω |
| Power RMS | 2400 W |
| Magnet | 280*140*25 / Y35 |
| Basket Material | Aluminum |
| Net Weight | 22.4 Kg. |

AD-1878PD AVENGER



Max Power

5600 W

Voice Coil

135mm / 5.5"

Sensitivity

97.5 ± 2dB

Frequency Range

35Hz ~ 2500Hz

| | |
|------------------|------------------|
| Nominal Diameter | 18" / 460 mm |
| Impedance | 8 Ω / 5.8 Ω |
| Power RMS | 2800 W |
| Magnet | 280*140*40 / Y35 |
| Basket Material | Aluminum |
| Gross Weight | 24.6 Kg. |

AD-1882PD CHROME



Max Power

5000 W

Voice Coil

152mm / 6"

Sensitivity

96 ± 2dB

Frequency Range

50Hz ~ 1000Hz

| | |
|------------------|------------------|
| Nominal Diameter | 18" / 487 mm |
| Impedance | 8 Ω / 5.2 Ω |
| Power RMS | 2500 W |
| Magnet | 330*170*30 / Y35 |
| Basket Material | Aluminum |
| Gross Weight | 28.7 Kg. |

AD-18D1500



Max Power

3000W

Voice Coil

100mm / 4"

Sensitivity

97 ± 2dB

Frequency Range

40Hz ~ 1500Hz

| | |
|------------------|-----------------|
| Nominal Diameter | 18" / 476 mm |
| Impedance | 8 Ω / 5.6 Ω |
| Power RMS | 1500 W |
| Magnet | 220*110*40/ Y35 |
| Basket Material | Aluminum |
| Gross Weight | 17.3 Kg. |

AD-18TBW100



Max Power

3000 W

Voice Coil

100mm / 4"

Sensitivity

96 ± 2dB

Frequency Range

40Hz ~ 2500Hz

| | |
|------------------|-----------------|
| Nominal Diameter | 18" / 460 mm |
| Impedance | 8 Ω / 5.2 Ω |
| Power RMS | 1500 W |
| Magnet | 220*110*30/ Y35 |
| Basket Material | Aluminum |
| Net Weight | 14.9 Kg. |

AD-18X1501S



Max Power

3600 W

Voice Coil

114.5mm / 4.5"

Sensitivity

98 ± 2dB

Frequency Range

35Hz ~ 2000Hz

| | |
|------------------|------------------|
| Nominal Diameter | 18" / 460 mm |
| Impedance | 8 Ω / 5.4 Ω |
| Power RMS | 1800 W |
| Magnet | 253*140*30 / Y35 |
| Basket Material | Aluminum |
| Gross Weight | 17.1 Kg. |

AD-18X1000G



Max Power

2400 W

Voice Coil

100mm / 4"

Sensitivity

98 ± 2dB

Frequency Range

36Hz ~ 2000Hz

| | |
|------------------|----------------|
| Nominal Diameter | 18" / 465 mm |
| Impedance | 8 Ω / 5.6 Ω |
| Power RMS | 1200 W |
| Magnet | 220*110*25/Y35 |
| Basket Material | Aluminum |
| Gross Weight | 12.9 Kg. |

AD-18X1505LF



Max Power

3000 W

Voice Coil

100mm / 4"

Sensitivity

98 ± 2dB

Frequency Range

35Hz ~ 2000Hz

| | |
|------------------|------------------|
| Nominal Diameter | 18" / 461 mm |
| Impedance | 8 Ω / 5.4 Ω |
| Power RMS | 1500 W |
| Magnet | 220*110*25 / Y35 |
| Basket Material | Zinc Alloy |
| Gross Weight | 11.9 Kg. |

AD-18X2210S



Max Power

4400 W

Voice Coil

130 mm / 5.3"

Sensitivity

97 ± 2dB

Frequency Range

44Hz ~ 2000Hz

| | |
|------------------|------------------|
| Nominal Diameter | 18" / 463 mm |
| Impedance | 8 Ω / 5.1 Ω |
| Power RMS | 2200 W |
| Magnet | 280*140*25 / Y35 |
| Basket Material | Aluminum |
| Net Weight | 20.1 Kg. |

AD-2160PD CHROME



Max Power

5000 W

Voice Coil

152mm / 6"

Sensitivity

96 ± 2dB

Frequency Range

37Hz ~ 1500Hz

| | |
|------------------|-----------------|
| Nominal Diameter | 21" / 568 mm |
| Impedance | 8 Ω / 5.4 Ω |
| Power RMS | 2500 W |
| Magnet | 330*170*30/ Y35 |
| Basket Material | Aluminum |
| Gross Weight | 30.6 Kg. |

AD-2182PD AVENGER



Max Power

7600 W

Voice Coil

152mm / 6"

Sensitivity

98 ± 2dB

Frequency Range

35Hz ~ 2000Hz

| | |
|------------------|------------------|
| Nominal Diameter | 21" / 550 mm |
| Impedance | 8 Ω / 5.8 Ω |
| Power RMS | 3800 W |
| Magnet | 300*170*50 / Y35 |
| Basket Material | Aluminum |
| Gross Weight | 32.6 Kg. |

AD-21NW151



Max Power

6000 W

Voice Coil

152mm / 6"

Sensitivity

97 ± 2dB

Frequency Range

30Hz ~ 1500Hz

| | |
|------------------|-----------------|
| Nominal Diameter | 21" / 570 mm |
| Impedance | 8 Ω / 5.8 Ω |
| Power RMS | 3000 W |
| Magnet | 145*60*15 / N45 |
| Basket Material | Aluminium |
| Gross Weight | 21.2 Kg. |

AD-21SW152



Max Power

6400 W

Voice Coil

152mm / 6"

Sensitivity

98 ± 2dB

Frequency Range

35Hz ~ 2000Hz

| | |
|------------------|-----------------|
| Nominal Diameter | 21" / 550 mm |
| Impedance | 8 Ω / 5.3 Ω |
| Power RMS | 3200 W |
| Magnet | 150*50*15 / N45 |
| Basket Material | Aluminum |
| Net Weight | 15.2 Kg. |

AD-2184PD



Max Power

7600 W

Voice Coil

152mm / 6"

Sensitivity

98 ± 2dB

Frequency Range

35Hz ~ 2000Hz

| | |
|------------------|------------------|
| Nominal Diameter | 21" / 550 mm |
| Impedance | 8 Ω / 5.8 Ω |
| Power RMS | 3800 W |
| Magnet | 300*170*50 / Y35 |
| Basket Material | Aluminum |
| Gross Weight | 37.8 Kg. |

15X825G



Max Power

1600 W

Voice Coil

4 In/Out

Sensitivity

100dB

Frequency Range

35Hz ~ 2000Hz

| | |
|------------------|--------------|
| Nominal Diameter | 15" / 390 mm |
| Impedance | 8 Ω |
| Power RMS | 800 W |
| Magnet | 220*110*25mm |
| Basket Material | Aluminum |
| Gross Weight | 133 Kg. |

AD-1886PD Pro



Max Power

6000 W

Voice Coil

6 In/Out

Sensitivity

96dB

Frequency Range

35Hz ~ 2000Hz

| | |
|------------------|--------------|
| Nominal Diameter | 18" / 487 mm |
| Impedance | 8 Ω |
| Power RMS | 3000 W |
| Magnet | 330*170*30mm |
| Basket Material | Aluminum |
| Gross Weight | 32.1 Kg. |

AD-15X1150SR



Max Power

2300W

Voice Coil

4" (99.2mm)

Sensitivity

98±2dB

Frequency Range

45Hz-3kHz

| | |
|------------------|----------------|
| Nominal Diameter | 15" (393mm) |
| Impedance | 8Ω / 5.3Ω |
| Power RMS | 1150W |
| Magnet | 220*110*25/Y35 |
| Basket Material | Aluminum |
| Gross Weight | 12.8KG |

AD-15X650M



Max Power

1300W

Voice Coil

4" (100mm)

Sensitivity

96

Frequency Range

49Hz-2kHz

| | |
|------------------|------------|
| Nominal Diameter | 15"/395mm |
| Impedance | 8Ω |
| Power RMS | 650W |
| Magnet | 220*110*25 |
| Basket Material | Aluminum |
| Net Weight | 12KG |

AD - 2166PD PRO

**Max Power**

6000 w

Voice Coil

6 In/Out

Sensitivity

96dB

Frequency Range

35Hz ~ 2000Hz

| | |
|------------------|--------------|
| Nominal Diameter | 21" / 568 mm |
| Impedance | 8 Ω |
| Power RMS | 3000 W |
| Magnet | 330*170*30mm |
| Basket Material | Aluminum |
| Gross Weight | 35.9 Kg. |

AD-1856PD Pro

**Max Power**

4800 W

Voice Coil

5 In/Out

Sensitivity

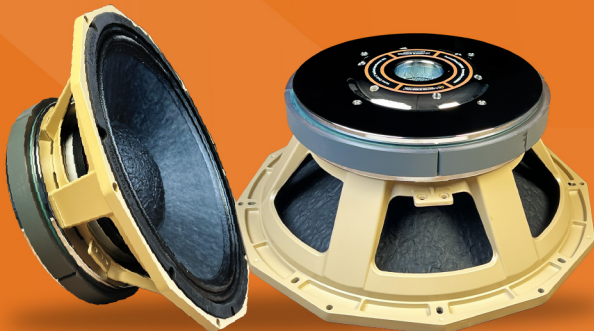
98dB

Frequency Range

35Hz ~ 2000Hz

| | |
|------------------|--------------|
| Nominal Diameter | 18" / 487 mm |
| Impedance | 8 Ω |
| Power RMS | 2400 W |
| Magnet | 280*140*25mm |
| Basket Material | Aluminum |
| Gross Weight | 23.6Kg. |

AD-1885PD CHROME

**Max Power**

5600W

Voice Coil

6" In/Out Inch

Sensitivity

96 db

Nominal Diameter

18"/487 Inch/mm

| | |
|-----------------|---------------|
| Impedance | 8 Ω |
| Power RMS | 2800W |
| Magnet | 330*170*30 MM |
| Basket Material | Aluminum |
| Gross Weight | 32.1 KG |

FERRITE DRIVER

750K



Mag. Material

Strontium Ferrite
Y35

Voice Coil

74.5mm/ 3" CCAR

Sensitivity

108±2db

Frequency Range

800Hz-20KHz

| | |
|-----------------|--------------|
| Throat Diameter | 50mm/ 2 Inch |
| Impedance | 8Ω/6.2Ω |
| Watts (RMS) | 120w |

850K



Mag. Material

Strontium Ferrite
Y35

Voice Coil

74.5mm/ 3" CCAR

Sensitivity

108 ±2db

Frequency Range

800Hz-20KHz

| | |
|-----------------|--------------|
| Throat Diameter | 50mm/ 2 Inch |
| Impedance | 8Ω/6.2Ω |
| Watts (RMS) | 120w |

AD-450S



Mag. Material

Strontium Ferrite
Y35

Voice Coil

44.4mm/1.75" CCAW

Sensitivity

106 ± 2db

Frequency Range

1.5Hz-20KHz

| | |
|-----------------|-------------|
| Throat Diameter | 25mm/1 Inch |
| Impedance | 80/60 |
| Watts (RMS) | 60w |

AD-550C



Mag. Material

Strontium Ferrite
Y35

Voice Coil

51.3mm/ 2" CCAW

Sensitivity

108 ± 2db

Frequency Range

1.2Hz-20KHz

| | |
|-----------------|----------------|
| Throat Diameter | 25.4mm/ 1 Inch |
| Impedance | 8Ω/ 7Ω |
| Watts (RMS) | 80w |

AD-560S



Mag. Material

Strontium Ferrite
Y35

Voice Coil

51.3mm/2" CCAW

Sensitivity

108 ± 2db

Frequency Range

1.2Hz-20KHz

| | |
|-----------------|---------------|
| Throat Diameter | 25.4mm/1 Inch |
| Impedance | 8 Ω / 7 Ω |
| Watts (RMS) | 80w |

AD-7245



Mag. Material

Strontium Ferrite
Y35

Voice Coil

72.5mm/3" CCAW

Sensitivity

108 ± 2db

Frequency Range

800Hz-20KHz

| | |
|-----------------|-------------|
| Throat Diameter | 50mm/2 Inch |
| Impedance | 8 Ω / 6.2 Ω |
| Watts (RMS) | 120w |

AD-850N



Mag. Material

Strontium Ferrite
V35

Voice Coil

3" (74.5mm) CCAR

Sensitivity

108dB ±2dB

Frequency Range

800Hz-20kHz (±3dB)

| | |
|-----------------|-----------|
| Throat Diameter | 2" (50mm) |
| Impedance | 8Ω / 6.2Ω |
| Watts (RMS) | 140W |

AD-551XLS



Mag. Material

Strontium Ferrite
Y35

Voice Coil

51.3 mm / 2"

Sensitivity

108 ± 2dB

Frequency Range

800Hz ~ 16000Hz

| | |
|-----------------|----------------|
| Throat Diameter | 25 mm / 1 inch |
| Impedance | 8 Ω / 6.5 Ω |
| Watts (RMS) | 100 W |

AD-761XLS

**Mag. Material**

Strontium Ferrite
Y35

Voice Coil

72.5 mm / 3"

Sensitivity

108 ± 2dB

Frequency Range

800Hz ~ 20000Hz

| | |
|-----------------|----------------|
| Throat Diameter | 50 mm / 2 inch |
| Impedance | 8 Ω / 6 Ω |
| Watts (RMS) | 140 W |

751LEX

**Mag. Material**

Strontium Ferrite
Y35

Voice Coil

72.5 mm / 3"

Sensitivity

108 ± 2dB

Frequency Range

800Hz ~ 20000Hz

| | |
|-----------------|----------------|
| Throat Diameter | 50 mm / 2 inch |
| Impedance | 8 Ω / 6 Ω |
| Watts (RMS) | 140 W |

AD-7242

**Mag. Material**

Strontium Ferrite
Y35

Voice Coil

72.5mm 3"

Sensitivity

108 ± 2dB

Frequency Range

800Hz ~ 20000Hz

| | |
|-----------------|----------------|
| Throat Diameter | 50 mm / 2 inch |
| Impedance | 8 Ω / 6.2 Ω |
| Watts (RMS) | 120 W |

AD-750TN

**Mag. Material**

Strontium Ferrite
Y35

Voice Coil

74.5mm / 3"

Sensitivity

108 ± 2dB

Frequency Range

800Hz ~ 20000Hz

| | |
|-----------------|----------------|
| Throat Diameter | 50 mm / 2 inch |
| Impedance | 8 Ω / 6.2 Ω |
| Watts (RMS) | 140 W |

AD-561XLS



Mag. Material

Strontium Ferrite
Y35

Voice Coil

51.3 mm 2"

Sensitivity

108 ± 2dB

Frequency Range

800Hz ~ 16000Hz

| | |
|-----------------|----------------|
| Throat Diameter | 25 mm / 1 inch |
|-----------------|----------------|

| | |
|-----------|-----------|
| Impedance | 8 Ω / 7 Ω |
|-----------|-----------|

| | |
|-------------|-------|
| Watts (RMS) | 100 W |
|-------------|-------|

AD-440C



Mag. Material

Strontium Ferrite
Y35

Voice Coil

72.5 mm / 3"

Sensitivity

108 ± 2dB

Frequency Range

800Hz ~ 20000Hz

| | |
|-----------------|----------------|
| Throat Diameter | 50 mm / 2 inch |
|-----------------|----------------|

| | |
|-----------|-------------|
| Impedance | 8 Ω / 6.2 Ω |
|-----------|-------------|

| | |
|-------------|-------|
| Watts (RMS) | 120 W |
|-------------|-------|

NEODYMIUM DRIVER

780TN



Diaphragm Compression
Driver Model - 3"

Impedance
8 ohm

Power RMS
120 Watts

AD-2408H



Mag. Material
Strontium Ferrite
Y35

Voice Coil
38 mm / 1.5"

Sensitivity
108 ± 2dB

Frequency Range
900Hz ~ 18000Hz

| | |
|-----------------|----------------|
| Throat Diameter | 25 mm / 1 inch |
| Impedance | 8 Ω / 6.2 Ω |
| Watts (RMS) | 60 W |

ADX-D2



Diaphragm Compression
Driver Model - 3"

Impedance
8 ohm

Power RMS
160 Watts

AD-400TN



Mag. Material
NdFeb N45

Voice Coil
44.4mm / 1.75"

Sensitivity
110 ± 2dB

Frequency Range
800Hz ~ 16000Hz

| | |
|-----------------|----------------|
| Throat Diameter | 25 mm / 1 inch |
| Impedance | 8 Ω / 6.2 Ω |
| Watts (RMS) | 80W |

AD-800TN

**Mag. Material**

NdFeb N45

Voice Coil

74.5mm / 3"

Sensitivity

108 ± 2dB

Frequency Range

800Hz ~ 20000Hz

| | |
|-----------------|------------------|
| Throat Diameter | 36 mm / 1.5 inch |
|-----------------|------------------|

| | |
|-----------|-------------|
| Impedance | 8 Ω / 6.5 Ω |
|-----------|-------------|

| | |
|-------------|-------|
| Watts (RMS) | 140 W |
|-------------|-------|

SUPER PRESSURE MID DRIVER

AD-4599

**RMS Power**

450W

Voice Coil

89mm/3.5"

Sensitivity

123±2dB

Frequency Range

200Hz-9KHz

| | |
|----------|-------------|
| Diameter | 50mm/2 Inch |
|----------|-------------|

| | |
|-----------|-------------|
| Impedance | 8 Ω / 6.2 Ω |
|-----------|-------------|

AD-4599EX PRO

**Max Volume**

160W/1m/35.7V
135dB

Voice Coil

200Hz ~ 8000Hz

Sensitivity

2X1W/1m 123dB

Frequency Range

200Hz ~ 8000Hz

| | |
|-----------------|------------------|
| Throat Diameter | 50.8 mm / 2 inch |
|-----------------|------------------|

| | |
|-----------|---------|
| Impedance | 2x 16 Ω |
|-----------|---------|

| | |
|-------------|------|
| Watts (RMS) | 120w |
|-------------|------|

AD-6599ex



Power
650w

Voice Coil
2x99.2mm

Sensitivity
123dB

Frequency Range
200-7000Hz

| | |
|------------|------------|
| Diameter | 2"(50.8mm) |
| Impedance | 2x16Ω |
| Net weight | 4.6kg |

AD-4599HD



Power
450 Watt

Impedance
8Ω

AMPLIFIERS



ADJ – 801

| | | | |
|-------------------|-------------------|-----------------|------------|
| 8Ω Stereo | 2x680W | Input Impedance | 20K Ω |
| 4Ω Stereo | 2x900W | Cross Talk | >90dB@1KHz |
| 8Ω Bridge | 1500W | Damping Factor | 600 |
| 4Ω Bridge | 1800W* | Rack Space | 2U |
| Output Circuitry | class H | Net Weight | 22.5Kg. |
| Frequency Respons | 20-20KHz (±0.3dB) | Gross Weight | 25.5KG |
| Input Sensitivity | 0.775V/1.0V/1.4V | | |



RL – 3800AD

| | | | |
|-------------------|-------------------|-----------------|------------|
| 8Ω Stereo | 2x800W | Input Impedance | 20K Ω |
| 4Ω Stereo | 2x1100W | Cross Talk | >90dB@1KHz |
| 8Ω Bridge | 2200W | Damping Factor | 800 |
| 4Ω Bridge | 2700W* | Rack Space | 2U |
| Output Circuitry | class H | Net Weight | 24Kg. |
| Frequency Respons | 20-20KHz (±0.3dB) | Gross Weight | 27.5Kg. |
| Input Sensitivity | 0.775V/1.0V/1.4V | 2Ω Stereo | 2x1400W |



RL - 4600AD

| | |
|-------------------|-------------------|
| 8Ω Stereo | 2x1000W |
| 4Ω Stereo | 2x1580W |
| 8Ω Bridge | 3110W |
| 4Ω Bridge | 3700W* |
| Output Circuitry | Class H |
| Frequency Respons | 20-20KHz (±0.3dB) |
| Input Sensitivity | 0.775V/1.0V/1.4V |

| | |
|-----------------|------------|
| Input Impedance | 20K Ω |
| Cross Talk | >90dB@1KHz |
| Damping Factor | 800 |
| Rack Space | 3U |
| Net Weight | 33.5Kg. |
| Gross Weight | 38Kg. |
| 2Ω Stereo | 2x1950W |



RL-5700AD

| | |
|-------------------|-------------------|
| 8Ω Stereo | 2x1200W |
| 4Ω Stereo | 2x1950W |
| 8Ω Bridge | 3750W |
| 4Ω Bridge | 4650W* |
| Output Circuitry | class H |
| Frequency Respons | 20-20KHz (±0.3dB) |
| Input Sensitivity | 0.775V/1.0V/1.4V |

| | |
|-----------------|------------|
| Input Impedance | 20K Ω |
| Cross Talk | >90dB@1KHz |
| Damping Factor | 1000 |
| Rack Space | 3U |
| Net Weight | 33.5Kg. |
| Gross Weight | 38KG |
| 2Ω Stereo | 2x2400W |



RL-7000AD

| | |
|-------------------|-------------------|
| 8Ω Stereo | 2x1450W |
| 4Ω Stereo | 2x2280W |
| 8Ω Bridge | 4500W |
| 4Ω Bridge | 5300W* |
| Output Circuitry | Class H |
| Frequency Respons | 20-20KHz (±0.3dB) |
| Input Sensitivity | 0.775V/1.0V/1.4V |

| | |
|-----------------|------------|
| Input Impedance | 20K Ω |
| Cross Talk | >90dB@1KHz |
| Damping Factor | 1200 |
| Rack Space | 3U |
| Net Weight | 36Kg. |
| Gross Weight | 40Kg. |
| 2Ω Stereo | 2x2680W |



RL-7800AD

| | |
|-------------------|-------------------|
| 8Ω Stereo | 2x1850W |
| 4Ω Stereo | 2x2950W |
| 8Ω Bridge | 5800W |
| 4Ω Bridge | 7800W* |
| Output Circuitry | class H |
| Frequency Respons | 20-20KHz (±0.3dB) |
| Input Sensitivity | 0.775V/1.0V/1.4V |

| | |
|-----------------|------------|
| Input Impedance | 20K Ω |
| Cross Talk | >90dB@1KHz |
| Damping Factor | 1300 |
| Rack Space | 3U |
| Net Weight | 44Kg. |
| Gross Weight | 48.5KG |
| 2Ω Stereo | 2x3800W |



BDT-8800AD

| | |
|-------------------|--------------------|
| 8Ω Stereo | 4x920W |
| 4Ω Stereo | 4x1450W |
| 8Ω Bridge | 2x1800W |
| 4Ω Bridge | 2x2800W |
| Output Circuitry | Class H |
| Frequency Respons | 20– 20KHz (±0.3dB) |
| Input Sensitivity | 0.775V/1.0V/1.4V |

| | |
|-----------------|------------|
| Input Impedance | 20K Ω |
| Cross Talk | >90dB@1KHz |
| Damping Factor | 800 |
| Rack Space | 2U |
| Net Weight | 27Kg. |
| Gross Weight | 30.5Kg. |



BDT-8800Pro

| | |
|-------------------|------------------|
| 8Ω Stereo | 4x920W |
| 4Ω Stereo | 4x1450W |
| 8Ω Bridge | 2x1800W* |
| 4Ω Bridge | 2800W |
| Output Circuitry | class H |
| Frequency Respons | 20Hz-20KHz±0.5dB |
| Input Sensitivity | 0.775V/1.0V/1.4V |

| | |
|-----------------|---------------|
| Input Impedance | 20kΩ / 10kΩ |
| Cross Talk | >65dB 80 1KHz |
| Damping Factor | >800 |
| Rack Space | 2U |
| Net Weight | 28.5KG |
| Gross Weight | 32KG |
| THD % | 0.05% |



ADT-8850

| | |
|-------------------|----------------------|
| 8Ω Stereo | 4 × 1500W |
| 4Ω Stereo | 4 × 1680W |
| 8Ω Bridge | 2 × 1950W |
| 4Ω Bridge | 2 × 3150W* |
| Output Circuitry | Class D/HD |
| Frequency Respons | 20 – 20kHz (±0.3dB) |
| Input Sensitivity | 0.775V / 26dB / 32dB |

| | |
|-----------------|------------|
| Input Impedance | 20K Ω |
| Cross Talk | >90dB@1KHz |
| Damping Factor | ≥700 |
| Rack Space | 2U |
| Net Weight | 27.5 kg |
| THD | 0.03% @ 8Ω |
| S/N Ratio | ≥103dB |



ADMT-1602

| | |
|-------------------|-----------------|
| 8Ω Stereo | 2x1800W |
| 4Ω Stereo | 2x2800W |
| 8Ω Bridge | 5600W |
| 4Ω Bridge | 7000W* |
| Output Circuitry | class H |
| Frequency Respons | 20-20KHz+0/-1dB |
| Input Sensitivity | 0.75V/1.0V/1.4V |

| | |
|-----------------|---------------|
| Input Impedance | 20K Ω |
| Cross Talk | ≤62dB 8Ω 1KHz |
| Damping Factor | ≥1300 |
| Rack Space | 3U |
| Net Weight | 39.5Kg. |
| Gross Weight | 42.5KG |
| 2Ω Stereo | 2x3500W* |
| THD % | 0.05%@8Ω |



ADMT – 1802

| | |
|-------------------|-------------------|
| 8Ω Stereo | 2x2200W |
| 4Ω Stereo | 2x3700W |
| 8Ω Bridge | 6400W |
| 4Ω Bridge | 8200W* |
| Output Circuitry | Class H |
| Frequency Respons | 20Hz-20KHz+0/-1dB |
| Input Sensitivity | 0.75V/1.0/1.4V |

| | |
|-----------------|---------------|
| Input Impedance | 20K Ω |
| Cross Talk | ≤62dB 8Ω 1KHz |
| Damping Factor | ≥1800 |
| Rack Space | 3U |
| Net Weight | 39.5Kg. |
| THD | 0.05%@8Ω |
| 2Ω Stereo | 2x4050W* |
| Gross Weight | 42.5KG |



AD-9000

| | |
|-------------------|-----------------|
| 8Ω Stereo | 2X2100W |
| 4Ω Stereo | 2x3850W |
| 8Ω Bridge | 4800W |
| 4Ω Bridge | 7100W* |
| Output Circuitry | class D/HD |
| Frequency Respons | 20-20KHz+0/-1dB |
| Input Sensitivity | 0.75V/1.0/1.4V |

| | |
|-----------------|---------------|
| Input Impedance | 20K Ω |
| Cross Talk | ≤62dB 8Ω 1KHz |
| Damping Factor | ≥3000 |
| THD % | 0.05%@8Ω |
| S/N Ratio | 109 dB |
| Gross Weight | 39 Kg |
| 2Ω Stereo | 2x5200W* |



XH-SERIES (AD-9900)

| | |
|-------------------|-----------------|
| 8Ω Stereo | 2X2200W |
| 4Ω Stereo | 2x3900W |
| 8Ω Bridge | 5000W |
| 4Ω Bridge | 7300W* |
| Output Circuitry | Class D/HD |
| Frequency Respons | 20-190HZ+0/-1dB |
| Input Sensitivity | 0.75V/1.0/1.4V |

| | |
|-----------------|---------------|
| Input Impedance | 20K Ω |
| Cross Talk | ≤62dB 8Ω 1KHz |
| Damping Factor | ≥3500 |
| Rack Space | 3U |
| Gross Weight | 39 Kg |
| THD | 0.05%@8Ω |
| 2Ω Stereo | 2x5500W* |



XX 16000 AD

| | |
|-------------------|-----------------|
| 8Ω Stereo | 2 × 4000W |
| 4Ω Stereo | 2 × 7000W |
| 8Ω Bridge | 8900W |
| Output Circuitry | Class D/HD |
| Frequency Respons | 20-300KHz±0.3dB |

| | |
|----------------|------------|
| Damping Factor | >3500 |
| 2Ω Stereo | 2 × 8100W* |
| 4Ω Bridge | 14200W* |



XX-14000AD

| | |
|-------------------|--------------------|
| 8Ω Stereo | 2 × 3200W |
| 4Ω Stereo | 2 × 6200W |
| 8Ω Bridge | 7300W |
| 4Ω Bridge | 13000W* |
| Output Circuitry | Class D/HD |
| Frequency Respons | 20Hz-190KHz+0/-1dB |
| Input Sensitivity | 0.75V/1.0/1.4V |

| | |
|-----------------|---------------|
| Input Impedance | 20K Ω |
| Cross Talk | ≤92dB 8Ω 1KHz |
| Damping Factor | ≥3500 |
| Rack Space | 3U |
| Gross Weight | 46.1 kg |
| THD | 0.05% @ 8 Ω |
| 2Ω Stereo | 2 × 7400W* |
| S/N Ratio | 109 dB |



XX-12000AD

| | |
|-------------------|----------------------|
| 8Ω Stereo | 2 × 2800W |
| 4Ω Stereo | 2 × 5600W |
| 8Ω Bridge | 6200W |
| 4Ω Bridge | 8900W* |
| Output Circuitry | Class D/HD |
| Frequency Respons | 20Hz-300Hz (±0.3dB) |
| Input Sensitivity | 0.775V / 1.0V / 1.5V |

| | |
|-----------------|---------------|
| Input Impedance | 20K Ω |
| Cross Talk | ≤62dB 8Ω 1KHz |
| Damping Factor | ≥3500 |
| THD % | 0.05% @ 8Ω |
| S/N Ratio | ≥100dB |
| Gross Weight | 45 kg |
| 2Ω Stereo | 2 × 6200W* |
| Rack Space | 3U |



XX-10200AD

| | |
|-----------|-----------|
| 8Ω Stereo | 2 × 2250W |
| 4Ω Stereo | 2 X 4000W |
| 8Ω Bridge | 5400W |

| | |
|-------------------|------------------|
| 4Ω Bridge | 7500W |
| Output Circuitry | Class D/HD |
| Frequency Respons | 10–300Hz /±0.3DB |



ADMT – 2202

| | |
|-----------|-----------|
| 8Ω Stereo | 2 × 3200W |
| 4Ω Stereo | 2 × 4700W |
| 8Ω Bridge | 7400W |

| | |
|----------------|-----------|
| Damping Factor | ≥1800 |
| 4Ω Bridge | 9500W* |
| 2Ω Stereo | 2 × 5800W |



6006 - AD

| | |
|----------------|---------|
| 8Ω Stereo | 4x620W |
| 4Ω Stereo | 4X910W |
| 2Ω Bridge | 2X2300W |
| 2Ω Stereo | 4X1180W |
| Damping Factor | 900 |
| Rack Space | 1.5V |

| | |
|-------------------|--------------------|
| 4Ω Bridge | 2X1680W |
| Output Circuitry | Class D/PDM |
| Frequency Respons | 20Hz – 20KHz±0.3dB |
| S/N Ratio | 109db |
| THD% | 0.02% |
| Net Weight | 12.8kg |

CROSSOVER



AD-234XS

| | |
|-----------------------|---|
| Input Connectors | XLR |
| Input Type | Electronically balanced/unbalanced, RF filtered |
| Input Impedance | Balanced >50k ohm, unbalanced >25k ohm |
| Max Input | >+22dBu balanced or unbalanced |
| CMRR | >40dB, typically >55dB at 1kHz |
| Output Connectors | XLR |
| Output Impedance | Balanced 60 ohm, unbalanced 30 ohm |
| Max Output | >+21dBu balanced/unbalanced into 2k ohms or greater |
| Bandwidth | 20Hz to 20kHz, +/-0.5dB |
| Frequency Response | < 3 Hz to > 90 kHz, +0/-3 dB |
| Signal to Noise Ratio | Ref: +4 dBu, 22 kHz measurement bandwidth |
| Dynamic Range | > 106 dB, unweighted, any output |
| THD+Noise | < 0.004% at +4 dBu, 1 kHz; < 0.04% at +20 dBu, 1 kHz |
| Crossover Frequencies | Low/Mid: 45 to 960 Hz or 450 Hz to 9.6 kHz (x10 setting); Low/High: 45 to 960 Hz or 450 Hz to 9.6 kHz (x10 setting); Mid/High 450Hz to 9.6kHz (x10 setting) |
| Operating Voltage | 230 VAC 50/60Hz |
| Net Weight | 1.8 Kg. |
| Gross Weight | 2.6 Kg. |



AD-201DiSi

| | |
|--------------------------------|---------------------------------------|
| 2 In / 10 Out Distribution | Input Imp: 50kΩ(Bal), 25kΩ(unbal) |
| Stereo/Mono Input Option | Output Imp: 220Ω(Unbal) |
| Individual Output Gain Control | Freq Responce: 0.35Hz-220Hz (+0/-3dB) |
| XLR/TRS Combo Inputs | SNR: >100Bu(22Hz-22kHz) |
| XLR/TRS Combo Outputs | THD:0.04%@4dBu,1kHz |
| Ultra-Low Harmonic Distortion | |



SR462-AD

| | |
|----------------------------------|---------------------------------------|
| Dual 31 Band Graphic Equalizer | 1/3 Octave Bandwidth EQ Bypass switch |
| Subwoofer Output With Crossover | Range +12 dB or +6 dB select Option |
| Constant "Q" design | 18 dB / octave Highpass Filter |
| 20 Hz – 20 kHz Full band support | Signal / Clip indicator |
| 1/3 Octave Bandwidth | |
| Balanced XLR - TRS input | |



AD260

| | | | |
|------------|----------------------|---------------|--------------------|
| Input Imp. | 40k Ohm | Dynamic Range | 10 dB / >107dB |
| Frequency | 20Hz - 20kHz, +/-0.5 | Max Input | +30dBu+30 Position |
| Max Output | +22dBu | | |



SR - 430QX

| | |
|---|--|
| Dual 15-Band EQ | <ul style="list-style-type: none"> • 20mm faders • Input Impedance: 40kΩ (Bal), 20kΩ (Unbal) • Max Output: +21 dBu (Bal/Unbal) • THD: 0.006% @1kHz • S/N Ratio: >90 dB (ref. 0.0775Vrms) • Switching: FET In/Out & Filter |
| • Constant Q Design | |
| • 50Hz Low-Cut, 12dB/Oct | |
| • Balanced XLR In/Out Balanced 1/4In, Impedance-Balanced Out | |
| • ISO 2/3 Octave Centers | |

DJ MIXER



DDJ-3

FEATURES

- Replaceable crossfader with reverse and normal slope controls
- Two switchable phono/line inputs plus one more dedicated line input giving a total of 5 inputs
- Master and Booth Outputs and three band EQ on each channel
- Balanced XLR and Unbalanced RCA Outputs
- USB 2.0 in USB version

FEATURES

- 6 MONO and XLR inputs and 2 stereo inputs
- Selectable 48V phantom power supply in each channel
- Equipped with PAD and MUTE button in each channel
- High, Mid, Low EQ adjustments in each channel
- Two AUX output
- 7 bands EQ in stereo main output
- Multi-functional Mp3
- Equipped with High and Low EQ adjustments in Mp3
- Built-in Soundcard function with PC & Phone recording
- 32 BIT effector with 24 kinds of DSP + Analog Effect
- Equip with EQ IN to turn On/Off to main output
- 60 mm fader
- FX to AUX



RA-8



M5 PRO

FEATURES

- Three channels with three-band rotary EQ and gain controls
- Phono/line and switchable RCA inputs for connecting CD players, digital music players, and turntables
- 1/4*(6.3mm)microphone input for performing,MCing, and making announcements
- 1/4"(6.3 mm)stereo headphone output for cueing and auditioning mixes
- Mic channel with dedicated two-band rotary EQ and gain controls
- Stereo RCA outputs to connect an amplifier, powered speakers, or another mixer
- Six-segment LED display for real-time visual monitoring
- PFL control for toggling between master and PFL metering
- Replaceable crossfader with reverse and slope controls
- XLR Balanced Stereo output for Professional Amplifier, Powered speaker, Another Mixer

FEATURES

- 10 MONO and XLR inputs and 2 stereo inputs
- High, Mid, Low EQ adjustments in each channel
- Two AUX output
- 7 bands EQ in stereo main output
- Multi-functional Mp3
- 60 mm fader
- Built-in Soundcard function with PC & Phone recording
- Selectable 48V phantom power supply in each channel
- Equipped with PAD and MUTE button in each channel
- Equipped with High and Low EQ adjustments in Mp3
- 32 BIT effector with 24 kinds of DSP + Analog Effect
- Equip with EQ IN to turn On/Off to main output



RA-12

FEATURES

| | |
|---|--|
| ● | 14 MONO and XLR inputs and 2 stereo inputs |
| ● | High, Mid, Low EQ adjustments in each channel Two AUX output |
| ● | 7 bands EQ in stereo main output Multi-functional Mp3 |
| ● | 60 mm fader |
| ● | Built-in Soundcard function with PC & Phone recording |
| ● | Selectable 48V phantom power supply in each channel |
| ● | Equipped with PAD and MUTE button in each channel |
| ● | Equipped with High and Low EQ adjustments in Mp3 32 BIT effector with 24 kinds of DSP + Analog Effect |
| ● | Equip with EQ IN to turn On/Off to main output |



RA-16



EXENT-16AD

FEATURES

| | |
|---|--|
| ● | 12 MONO and XLR inputs, 4 stereo inputs. |
| ● | Each output signal strength with LED display |
| ● | With PAD/LOW CUT button on each channel. |
| ● | Freestanding 48V power switch on each channel. |
| ● | With FREQ function adjustments on each channel |
| ● | MUTE button with LED display on each channel. |
| ● | Monitor button with LED display on each channel. Double 99 DSP effectors |
| ● | 100 MM fader: |
| ● | ST input channels with three segments EQ adjustments and gain control. |
| ● | Eight AUX outputs (With PRE / POSRT FADER selection). |
| ● | One of ST channel's signal can be sent to AUX outputs. |
| ● | FX TO AUX. |
| ● | AUX outputs with LED display. |
| ● | With soundcard function OTG port, connect with PC or PHONE. |
| ● | MP3 player with bluetooth and recording function. |
| ● | Stereo output and four group outputs. |
| ● | Side panel with LED display. |

FEATURES

| |
|--|
| ● 20 MONO and XLR inputs, 4 stereo inputs. |
| ● Each output signal strength with LED display. |
| ● With PAD/LOW CUT button on each channel. |
| ● Freestanding 48V power switch on each channel. |
| ● With FREQ function adjustments on each channel. |
| ● MUTE button with LED display on each channel. |
| ● Monitor button with LED display on each channel |
| ● Double 99 DSP effectors. |
| ● 100 MM fader |
| ● ST input channels with three segments EQ adjustments and gain control. |
| ● Eight AUX outputs(With PRE /POST FADER selection). |
| ● One of ST channel's signal can be sent to AUX outputs |
| ● FX TO AUX. |
| ● AUX outputs with LED display. |
| ● With soundcard function OTG port ,connect with PC or PHONE |
| ● MP3 player with bluetooth and recording function |
| ● Stereo output and four group outputs. |
| ● Side panel with LED display. |



EXENT-24AD

FEATURES

| |
|---|
| ● Number of Channels- 6 |
| ● Product Dimensions- 7D x 22.7W x 24.5H Centimeters |
| ● Item Weight - 1.65 Kilograms |
| ● Connectivity Technology- Auxiliary, Bluetooth, USB |
| ● Power Source- Coded Electric |
| ● Versatile 6-Channel Audio Mixer : Mix 4 mono mic /XLR/line inputs + 2 stereo channel—perfect as a compact DJ mixer, small studio mixer, or for live sound setups. |
| ● Bluetooth & MP3 Integration : Stream audio wirelessly from smartphones or play MP3s via USB—ideal for any digital audio player or portable DJ console. |
| ● 99 Built-in DSP Effects : Customize your sound with 99 digital effects—enhance vocals, instruments, or DJ sets with studio-grade audio processing. |
| ● 48V Phantom Power for Mics :Power condenser micro -phones with built-in phantom power—great for podcasting, live vocals, and professional studio recording. |
| ● USB & PC Recording Support : Record sessions directly to USB drives or your computer—use it as a sound card audio interface for recording studio quality. |



PXR-6AD

M6 USB



FEATURES

- Four input channels, each with gain, three-band EQ, and LED metering USB
- Computer connection for playing and recording with Mac or PC
- Play music from music-player software
- Record your mix to your computer
- Multiple phono, line, and mic inputs
- Dedicated XLR mic channel and additional mic input on channel 4
- Replaceable crossfader with slope control
- Assign any channel to either side of the crossfader
- Class Compliant: this product is immediately compatible with every current and future
- Version of Mac OS X and iOS and with Windows (98SE and up) operating systems.



ATOM - 4

FEATURES

| |
|--|
| <ul style="list-style-type: none"> ● KEY FEATURES :&amp;amp;amp;amp;amp;amp;amp;lt;br />DUAL |
| <ul style="list-style-type: none"> ● BLUETOOTH CONNECTIVITY: The ATOM 4 comes equipped with dual Bluetooth, allowing users to connect two devices simultaneously and mix music wirelessly from smartphones, tablets, or other Bluetooth-enabled devices |
| <ul style="list-style-type: none"> ● .4-CHANNEL MIXER: Each channel has individual faders, EQ controls (low, mid, high), and gain knobs, allowing for detailed mixing of multiple sound sources. |
| <ul style="list-style-type: none"> ● USB INPUTS: The crossfader features assignable channels and includes slope adjustment for customizing the transition between tracks. |
| <ul style="list-style-type: none"> ● MULTIPLE INPUT TYPES: The ATOM 4 supports multiple RCA inputs for connecting external audio devices such as turntables or CD players.&lt;br />&lt;br />DEDICATED SUBWOOFER CONTROL:&lt;br class="yoast-text-mark" />&gt;On the master output section, there is a subwoofer control knob, enabling direct tuning and gain control over the subwoofer output for enhanced bass performance. |
| <ul style="list-style-type: none"> ● BALANCED OUTPUTS: &lt;br />The mixer provides balanced XLR outputs, ensuring clean audio transmission to speakers, which is crucial for professional use. |
| <ul style="list-style-type: none"> ● CUE AND HEADPHONE MONITORING: Headphone monitoring options are available with mix/split cue functionality, allowing DJs to preview specific channels in advance of mixing. |
| <ul style="list-style-type: none"> ● CROSSFADER: Three USB inputs allow for direct integration with digital devices such as laptops, USB drives, or MIDI controllers.&lt;br />&lt;br />XLR MICROPHONE INPUTS:&lt;br />&lt;br />The ATOM 4 includes at least one XLR microphone input for high-quality vocal or announcement integration. |

NETWORK



AD-450NW

| | |
|---------------------|------------|
| General Information | 1-Way |
| Output Impedance | 8 Ω / 4 Ω |
| Crossover Frequency | 3000 Hz |
| Slope | 12dB / Oct |

| | |
|-----------------|------------------|
| RMS Power | 100 W |
| Suitable for HF | 1 inch, 1.4 inch |
| Dimensions | 100*160*30 mm |
| Weight | 0.199 Kg |



AD-750NX

| | |
|---------------------|------------|
| General Information | 1-Way |
| Output Impedance | 8 Ω / 4 Ω |
| Crossover Frequency | 2500 Hz |
| Slope | 12dB / Oct |

| | |
|-----------------|------------------|
| RMS Power | 150 W |
| Suitable for HF | 1.4 inch, 2 inch |
| Dimensions | 100*160*30 mm |
| Weight | 0.199 Kg |



450 GF+

2-way passive crossover network
 Max Power Handling: 150W
 Compatibility: Suitable for 8 ohms HF drivers only
 Filtering: 18 dB/Octave slope on HF
 Features: Includes professional protection circuitry for the high-frequency component
 Key Components Visible
 C1 & C2: Polypropylene capacitors (8.2uF/400V and C1 (3.3uF/400V)
 L: Oxygen-free copper inductance (0.32mH)
 R1 (50W10RJ), R2 (50W20RJ), and R3 (50W6RJ)
 Protection: Professional speaker protector circuitry

Type: 1-Way Passive Crossover Network
 Max Power Handling: 250W
 Impedance: Suitable for 8 Ohm HF drivers only
 Slope: 18 dB/Octave slope on HF
 Features:
 Professional protection circuit for the HF driver
 Uses C2 Polypropylene capacitors (8.2uF/400V) and C1 (3.3uF/400V)
 Features an oxygen-free copper inductor (0.32mH)
 Includes non-inductive resistances R1 (50W10RJ), R2 (50W20RJ), and R3 (50W6RJ)



750GF+



AD - 815NX

| | |
|-------------------|---------|
| Crossover Network | 2-Way |
| Output Impedance | 8Ω / 4Ω |

| | |
|---------------------|---------|
| RMS Power | 150W |
| Crossover Frequency | 2500 Hz |

| | |
|--------------|-----|
| Octave Slope | 2dB |
|--------------|-----|

MICROPHONES



UHF-450AD

| | |
|-----------------------|------------------|
| Mute control | Noise Lock |
| Frequency Response | 80Hz 18kHz |
| Frequency Stability | +/- 0.006% |
| S/N Ratio | >97dB |
| Total Harmonic Distor | < 0.02 % @ 1 kHz |

| | |
|-------------------------------|-----------|
| Receiving Sensitivity | -80dBm |
| Operating range | 100 meter |
| Resonance Interference Rate | 54 dB |
| False Image Interference Rate | 80dB |



UHF-600AD

| | |
|--------------------|----------------|
| Carrier Frequency | UHF 440-960MHz |
| Channels Total | 200 |
| Oscillation Mode | IC |
| T.H.D | <0.5% |
| Sensitivity | 2.0uV |
| Frequency | 35Hz-20KHz±3dB |
| S/N Ratio | >90dB |
| Operation Distance | >100m |
| Power Supply | DC14-22V 500mA |
| Audio Output Jack | 1*6.3mm/2*XLR |

| | |
|--------------------|-------------------|
| Receiver Type | Antenna Diversity |
| size | 210*206*48mm |
| Transmission Power | 10mW or 5mW |
| Modulation Mode | IC |
| Battery Type | 2*AA |
| Spurious Rejection | >50dB |
| Frequency Response | 60Hz-15KHz±3dB |
| Product Size | φ52*245mm |
| S/N Ratio | >90dB |
| Dynamic Range | >110dB |



UHF-950AD

| | |
|--------------------|----------------|
| Carrier Frequency | UHF 440-960MHz |
| Channels Total | 200 |
| Oscillation Mode | IC |
| T.H.D | <0.5% |
| Sensitivity | 2.0uV |
| Frequency | 35Hz-20KHz |
| S/N Ratio | >90dB |
| Operation Distance | 200m |
| Power Supply | DC14-18V 500mA |
| Audio Output Jack | 1*6.3mm/2*XLR |

| | |
|--------------------|-----------------------|
| Receiver Type | Antenna Diversity |
| Size | 420*190*43mm |
| Transmission Power | 10mW or 5mW |
| Modulation Mode | IC |
| Battery Type | 2*AA |
| Spurious Rejection | >50dB |
| Frequency Response | <75KHz |
| Product Size | φ55*258mm/φ49.5*255mm |
| S/N Ratio | >90dB |
| Dynamic Range | >100dB |

LINE ARRAY



AD-12X3LA

| | |
|--------------------|-------------------------|
| Maximum SPL | 132dB peak |
| Frequency Response | 45Hz-20kHz (±3dB) |
| Power Handling | 1600W RMS |
| Sensitivity | 99dB (1W/1m) |
| Nominal Impedance | 4Ω (Passive) |
| LF Drivers | 2×12" Neodymium |
| HF Drivers | 2×3" Titanium Diaphragm |
| Dimensions (H×W×D) | 900×360×450mm |

| | |
|--------------------|------------------------------|
| Finish | Textured Polyurea Coating |
| Enclosure Material | Baltic Birch Plywood |
| Net Weight | 36.8kg (81 lbs) |
| Gross Weight | 39.9kg (88 lbs) |
| Rigging | Integrated Flyware Points |
| Input | Dual Neutrik NLA4MPR SpeakON |
| Output | Loop-Through SpeakON |



ADX-20

| | |
|--------------------|----------------------|
| Maximum SPL | 132dB peak |
| Response | 45Hz-18kHz (±3dB) |
| Peak Power | 950W RMS |
| Coverage Pattern | 100° (H) × 15° (V) |
| Compression Driver | 2" (3.0" voice coil) |
| Crossover | 1800Hz bi-amp |
| DSP Controls | Cluster, HF Curve |
| Limiter Type | Soft Clipping |

| | |
|------------------|------------------------|
| Width | 705mm (27.7") |
| Depth | 445mm (17.5") |
| Height | 294mm (11.5") |
| Weight | 29kg (64lbs) |
| Cabinet Material | Sound-Grade |
| Power Supply | 1200W Switching |
| HF Amplifier | Class D (200W) |
| LF Amplifier | Class D (1000W) |
| Protection | Thermal / RMS Limiters |

PA SYSTEMS



STM15PRO-AD

| | |
|--------------------|-------------------------------|
| Woofer | 15" (75mm Voice Coil) |
| RMS Power | 2200W |
| Frequency Response | 40Hz-20kHz (±3dB) |
| Impedance | 4Ω |
| Sensitivity | 98dB (1W/1m) |
| DSP Controls | EQ, Delay, Limiter, Crossover |
| Inputs | 1/4" Line |
| Output | XLR Mix Out |

| | |
|----------------------|--------------------------|
| Physical Dimensions | 780×475×470mm |
| Net Weight | 22.5 kg |
| Gross Weight | 25.05 kg |
| Enclosure | PP Plastic composite |
| Included Accessories | Power Cable |
| User Manual | Optional Flying Hardware |
| Wireless | Bluetooth 5.0 |



STM15-AD

| | |
|--------------------|-----------------------|
| Woofer | 15" (75mm Voice Coil) |
| RMS Power | 2000W |
| Frequency Response | 45Hz-18kHz (±3dB) |
| Impedance | 4Ω |
| Sensitivity | 97dB (1W/1m) |
| DSP Controls | EQ, Delay, Limiter |
| Inputs | 1/4" Line |
| Output | XLR Mix Out |

| | |
|----------------------|--------------------------|
| Physical Dimensions | 780×475×470mm |
| Net Weight | 24 kg |
| Gross Weight | 27.04 kg |
| Enclosure | PP Plastic composite |
| Included Accessories | Power Cable |
| | User Manual |
| | Optional Flying Hardware |
| Wireless | Bluetooth 5.0 |

VOICE COILS



SUPERIOR QUALITY & ATTRACTIVE PRICE

**Largest range in India over
150 Models (25mm - 178mm)**

100% original & imported voice coils

Suitable for higher wattage Speakers

Heat Resistance Raw material Used

As we all know Voice Coils are how important part in a loudspeaker's, but here in Audiotone we are take it very seriously. Why because we have dedicated R&D team with well-equipped modern technology for designing application oriented solutions, continuous testing & analysis which we earned in various years of distribution across the nation.

RECONE KITS



We believe customers relationship in top priority. We ensure timely delivery of Recone kits (Voice Coils, Spiders, Paper Cones etc.) after sales service with immediate replacements.

DIAPHRAGMS



**Largest Range in India over
42 Models (25mm to 99mm)**

100% original & imported Diaphragms

Suitable for higher wattage HF Units

Diaphragms are most complex part in HF compression driver, so we are very strict about quality of diaphragms materials such as voice coil wire, former temperature bearing capacity and high grade titanium or beryllium, to serve subsistence option as good original components for after market demands.



At Audiotone, our experienced team of designers places a high value on technical excellence, product reliability, and consistent electro-acoustical functionality. With 32 years of inspired and deliberate engineering, we have earned nationwide acclaim, particularly from the Indian sound rental community. Our commitment to performance and quality control is unwavering.


Specializing in audio components, especially loudspeaker design and distribution, Audiotone performs most of its engineering and development work in England. Our dedication to quality has established us as the premier choice for state-of-the-art high-end transducers.

We never compromise on product or sound quality, remaining steadfast in our pursuit of perfection. Audiotone is renowned for its commitment to excellence, allowing us to maintain our leading position in the audio industry.

WARNING

In the market spurious /Duplicate sub-standard Amplifiers, Microphones, H.F Drivers, Speakers, Diaphragms and Voice Coils are being passed off as **GENUINE AUDIOTONE PRODUCTS**

BE VERY CAREFUL

- Obtain your requirements from AUTHORISED AUDIOTONE DEALERS & DISTRIBUTORS only.
- Insist on seeing the AUTHORISED DEALER CERTIFICATE &  'TRADE MARK'.
- Manufacture & sale of Spurious/Duplicate Products is illegal & Punishable under law.

Rampura Road, Dadabari, Sanganer, Jaipur - 302029 (India)
info@audiotone.co.in, www.audiotone.co.in

Scan to download
product catalog



Authorized Dealer