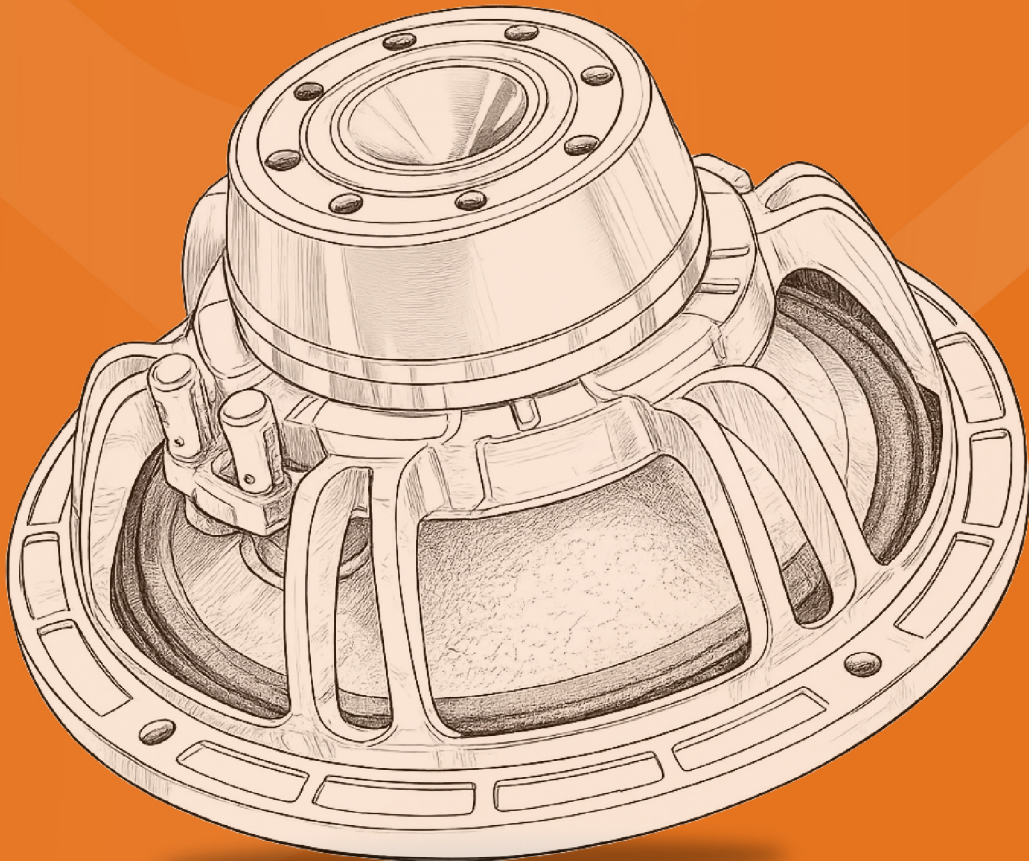




# CATALOGUE

## 2026

**Think** Music **Think** Audiotone.



# ATOMIC SERIES

## 15X1025YX



**Max Power**  
2100W

**Voice Coil**  
4" (99.2mm)

**Sensitivity**  
98±2dB

**Frequency Range**  
45Hz-3kHz

Nominal Diameter	15" (393mm)
Impedance	8Ω / 5.3Ω
Power RMS	1050W
Magnet	220*110*25/Y35
Basket Material	Aluminum
Gross Weight	12.9KG

## 15X1255YX



**Max Power**  
2500W

**Voice Coil**  
4.5" (114.5mm)

**Sensitivity**  
98±2dB

**Frequency Range**  
35Hz-2kHz

Nominal Diameter	15" (393mm)
Impedance	8Ω / 5.1Ω
Power RMS	1250W
Magnet	253*140*25/Y35
Basket Material	Aluminum
Gross Weight	16.5KG

## 18X2125YX



**Max Power**  
4200 W

**Voice Coil**  
127mm / 5"

**Sensitivity**  
97 ± 2dB

**Frequency Range**  
35Hz ~ 2000Hz

Nominal Diameter	18" / 465 mm
Impedance	8 Ω / 5.2 Ω
Power RMS	2100 W
Magnet	280*140*25/ Y35
Basket Material	Aluminum
Net Weight	20.3 Kg.

## 18X2530YX



**Max Power**  
5000 W

**Voice Coil**  
127mm / 5"

**Sensitivity**  
97.5 ± 2dB

**Frequency Range**  
35Hz ~ 2000Hz

Nominal Diameter	18" / 465 mm
Impedance	8 Ω / 5.2 Ω
Power RMS	2500 W
Magnet	280x140x50/ Y35
Basket Material	Aluminum
Gross Weight	26.9 Kg.

## AD-18N127XY

**Max Power**

4400 W

**Voice Coil**

127mm / 5"

**Sensitivity**

98 ± 2dB

**Frequency Range**

35Hz ~ 2000Hz

Nominal Diameter	18" / 465 mm
Impedance	8 Ω / 5.2 Ω
Power RMS	2200 W
Magnet	120*50*15 / N45
Basket Material	Aluminum
Gross Weight	12.9 Kg.

## AD-18X2335YX

**Max Power**

4700 W

**Voice Coil**

135mm / 5.5"

**Sensitivity**

98 ± 2dB

**Frequency Range**

30Hz ~ 1500Hz

Nominal Diameter	18" / 465 mm
Impedance	8 Ω / 5.3 Ω
Power RMS	2350 W
Magnet	300*170*25/ Y35
Basket Material	Aluminum
Gross Weight	23.4 Kg.

## AD-18X2740YX

**Max Power**

5500 W

**Voice Coil**

135mm / 5.5"

**Sensitivity**

98.5 ± 2dB

**Frequency Range**

30Hz ~ 1500Hz

Nominal Diameter	18" / 465 mm
Impedance	8 Ω / 5.3 Ω
Power RMS	2750 W
Magnet	300*170*50/ Y35
Basket Material	Aluminum
Net Weight	30.9 Kg.

## AD-18X2645YX

**Max Power**

5200 W

**Voice Coil**

152 mm / 6"

**Sensitivity**

98.5 ± 2dB

**Frequency Range**

30Hz ~ 1500Hz

Nominal Diameter	18" / 465 mm
Impedance	8 Ω / 5.3 Ω
Power RMS	2600 W
Magnet	330*170*25/ Y35
Basket Material	Aluminum
Gross Weight	27.8 Kg.

## AD-18X3155YX

DOUBLE  
MAGNET

**Max Power**

6200 W

**Voice Coil**

152mm / 6"

**Sensitivity**

98.5 ± 2dB

**Frequency Range**

30Hz ~ 1500Hz

Nominal Diameter	18" / 465 mm	Magnet	330*170*50 / Y35
Impedance	8 Ω / 5.3 Ω	Basket Material	Aluminum
Power RMS	3100 W	Gross Weight	37.5 Kg.

## AD-1885PD CROME

**Max Power**

5600 W

**Voice Coil**

152mm

**Sensitivity**

96dB

**Frequency Range**

48Hz ~ 1.6KHz

Nominal Diameter	18" / 487 mm	Magnet	330*170*30
Impedance	8 Ω	Basket Material	Aluminum
Power RMS	2800 W	Gross Weight	32.1Kg.

# EXCLUSIVE SERIES

## AD-15X830ES



**Max Power**  
1600W

**Voice Coil**  
100mm / 4"

**Sensitivity**  
96 ± 2dB

**Frequency Range**  
42Hz ~ 2000Hz

Nominal Diameter	15" / 402 mm
Impedance	8 Ω
Power RMS	800W
Magnet	220x110x25 mm
Basket Material	Aluminum
Net Weight	12.6 kg

## AD-15X410ES



**Max Power**  
800 W

**Voice Coil**  
75.8mm / 3"

**Sensitivity**  
97 ± 2dB

**Frequency Range**  
45Hz ~ 3000Hz

Nominal Diameter	15" / 393 mm
Impedance	8 Ω / 5.6 Ω
Power RMS	400 W
Magnet	190*85*20 / Y35
Basket Material	Aluminum
Gross Weight	7.4 Kg.

## AD-15X1030ES



**Max Power**  
2000 W

**Voice Coil**  
4" in/out

**Sensitivity**  
96dB

**Frequency Range**  
42Hz ~ 2000Hz

Nominal Diameter	15" / 402mm
Impedance	8 Ω
Power RMS	1000 W
Magnet	220*110*25
Basket Material	Aluminum
Net Weight	13.9 Kg.

## AD-18X1240ES



**Max Power**  
2400 W

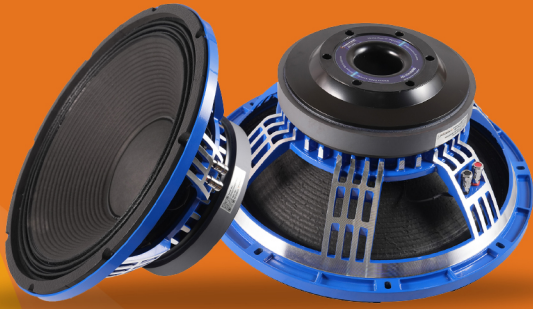
**Voice Coil**  
100mm / 4"

**Sensitivity**  
98 ± 2dB

**Frequency Range**  
35Hz ~ 2000Hz

Nominal Diameter	18" / 465 mm
Impedance	8 Ω / 5.6 Ω
Power RMS	1200 W
Magnet	220*110*25 / Y35
Basket Material	Aluminum
Gross Weight	15.2 Kg.

## AD-15X1020ES



**Max Power**  
2000 W

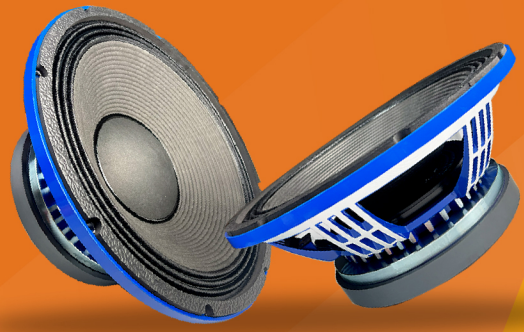
**Voice Coil**  
99.2mm / 4"

**Sensitivity**  
98 ± 2dB

**Frequency Range**  
45Hz ~ 3000Hz

Nominal Diameter	15" / 393 mm
Impedance	8 Ω / 5.6 Ω
Power RMS	1000 W
Magnet	220*110*25/ Y35
Basket	Aluminium
Net Weight	12.8 Kg.

## AD-15X1250ES



**Max Power**  
2400 W

**Voice Coil**  
114.5mm / 4.5"

**Sensitivity**  
97 ± 2dB

**Frequency Range**  
35Hz ~ 2000Hz

Nominal Diameter	15" / 393mm
Impedance	8 Ω / 5.4 Ω
Power RMS	1200 W
Magnet	253*140*25/ Y35
Basket Material	Aluminum
Gross Weight	16.6 Kg.

## AD-1875ES



**Max Power**  
4400 W

**Voice Coil**  
127mm / 5"

**Sensitivity**  
95 ± 2dB

**Frequency Range**  
40Hz ~ 2000Hz

Nominal Diameter	18" / 465 mm
Impedance	8 Ω / 6.8 Ω
Power RMS	2200 W
Magnet	280*140*25/ Y35
Basket Material	Aluminum
Net Weight	20.8 Kg.

## AD-1895ES



**Max Power**  
5000 W

**Voice Coil**  
127mm / 5"

**Sensitivity**  
96 ± 2dB

**Frequency Range**  
40Hz ~ 2000Hz

Nominal Diameter	18" / 465 mm
Impedance	8 Ω / 6.2 Ω
Power RMS	2500 W
Magnet	280*140*50 / Y35
Basket Material	Aluminum
Gross Weight	27.4 Kg.

## AD-18X1560ES



**Max Power**

3600 W

**Voice Coil**

115mm / 4.5"

**Sensitivity**

97 ± 2dB

**Frequency Range**

40Hz ~ 1500Hz

Nominal Diameter	18" / 465 mm
Impedance	8 Ω / 5.1 Ω
Power RMS	1800 W
Magnet	250*140*25 / Y35
Basket Material	Aluminum
Gross Weight	17.5 Kg.

## AD-18X1520ES



**Max Power**

3600 W

**Voice Coil**

114.5mm / 4.5"

**Sensitivity**

98 ± 2dB

**Frequency Range**

35Hz ~ 2000Hz

Nominal Diameter	18" / 465 mm
Impedance	8 Ω / 5.1 Ω
Power RMS	1800 W
Magnet	253*140*30 / Y35
Basket Material	Aluminum
Gross Weight	17.1 Kg.

## AD-1870ES



**Max Power**

4000 W

**Voice Coil**

127mm / 5"

**Sensitivity**

97 ± 2dB

**Frequency Range**

40Hz ~ 2000Hz

Nominal Diameter	18" / 465 mm
Impedance	8 Ω / 5.6 Ω
Power RMS	2000 W
Magnet	280*140*25 / Y35
Basket Material	Aluminum
Gross Weight	21.0 Kg.

## 18X1570ES



**Max Power**

3600 W

**Voice Coil**

4.5" IN/OUT

**Sensitivity**

94dB

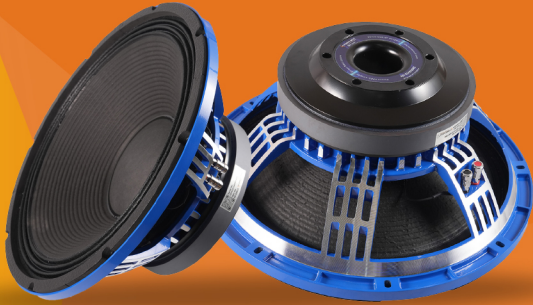
**Frequency Range**

36Hz ~ 1.6kHz

Nominal Diameter	18" / 465 mm
Impedance	8 Ω
Power RMS	1800 W
Magnet	250*140*25
Basket Material	Aluminum
Gross Weight	18.8 Kg.

# DJ SERIES

## AD-15X1020ES



**Max Power**

2000 W

**Voice Coil**

99.2mm / 4"

**Sensitivity**

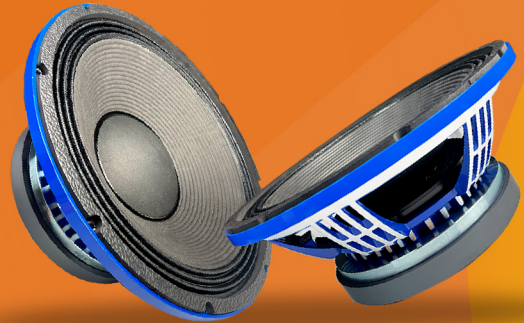
98 ± 2dB

**Frequency Range**

45Hz ~ 3000Hz

Nominal Diameter	15" / 393 mm
Impedance	8 Ω / 5.6 Ω
Power RMS	1000 W
Magnet	220*110*25/ Y35
Basket Material	Aluminum
Gross Weight	12.8 Kg.

## AD-15X1050ES



**Max Power**

2400 W

**Voice Coil**

4.5" / 114.5mm

**Sensitivity**

97dB

**Frequency Range**

35Hz ~ 2000Hz

Nominal Diameter	15" / 393mm
Impedance	8 Ω / 5.4 Ω
Power RMS	1200 W
Magnet	253*140*25/ Y35
Basket Material	Aluminum
Gross Weight	17.9 Kg.

## AD-15X410ES



**Max Power**

800 W

**Voice Coil**

75.8mm / 3"

**Sensitivity**

97 ± 2dB

**Frequency Range**

45Hz ~ 3000Hz

Nominal Diameter	15" / 393 mm
Impedance	8 Ω / 5.6 Ω
Power RMS	400 W
Magnet	190*85*20 / Y35
Basket Material	Aluminum
Gross Weight	7.4 Kg.

## AD-15X510ES



**Max Power**

1000 W

**Voice Coil**

86.5mm / 3.5"

**Sensitivity**

98 ± 2dB

**Frequency Range**

45Hz ~ 3000Hz

Nominal Diameter	15" / 393 mm
Impedance	8 Ω / 4.8 Ω
Power RMS	500 W
Magnet	190*95*25 / Y35
Basket Material	Aluminum
Gross Weight	8.9 Kg.

## AD-18SW115ES



**Max Power**  
3600W

**Voice Coil**  
114.5mm/ 4.5" In

**Sensitivity**  
98 ± 2dB

**Frequency Range**  
35Hz to 2000Hz

Nominal Diameter	18" / 465 mm
Impedance	8 Ω / 5.3 Ω
Power RMS	1800W
Magnet	250*140*25 / Y35
Basket Material	Aluminum
Gross Weight	11.0 kg

## AD-18X1520ES



**Max Power**  
3600 W

**Voice Coil**  
114.5mm / 4.5"

**Sensitivity**  
98 ± 2dB

**Frequency Range**  
35Hz ~ 2000Hz

Nominal Diameter	18" / 465 mm
Impedance	8 Ω / 5.1 Ω
Power RMS	1800 W
Magnet	253*140*30 / Y35
Basket Material	Aluminum
Gross Weight	17.1 Kg.

# DRIVER COMPONENTS

## AD-10MD26



**Max Power**  
800 W

**Voice Coil**  
75.5 mm / 3"

**Sensitivity**  
98 ± 2dB

**Frequency Range**  
61Hz ~ 3800Hz

Nominal Diameter	10" / 262 mm
Impedance	8 Ω / 5.8 Ω
Power RMS	400 W
Magnet	180*85*20 / Y35
Basket Material	Aluminum
Gross Weight	5.4 Kg.

## AD-10N76



**Max Power**  
800 W

**Voice Coil**  
75.8 mm / 3"

**Sensitivity**  
96 ± 2dB

**Frequency Range**  
75Hz ~ 5500Hz

Nominal Diameter	10" / 262 mm
Impedance	8 Ω / 6.8 Ω
Power RMS	400 W
Magnet	70*12 / N45
Basket Material	Aluminum
Gross Weight	3.2 Kg.

## AD-12N351



### Max Power

1200 W

### Voice Coil

86.5mm / 3.5"

### Sensitivity

97 ± 2dB

### Frequency Range

46Hz ~ 3500Hz

Nominal Diameter	12" / 320 mm
Impedance	8 Ω / 5.3 Ω
Power RMS	600 W
Magnet	80*10 / N45
Basket Material	Aluminum
Gross Weight	4.9 Kg.

## AD-12ND76



### Max Power

1000 W

### Voice Coil

75.8mm / 3"

### Sensitivity

98 ± 2dB

### Frequency Range

46Hz ~ 5500Hz

Nominal Diameter	12" / 310 mm
Impedance	8 Ω / 6.8 Ω
Power RMS	500 W
Magnet	25*12*12/ N45
Basket Material	Aluminum
Gross Weight	4.4 Kg.

## AD-12X201FG



### Max Power

4400 W

### Voice Coil

127mm / 5"

### Sensitivity

95 ± 2dB

### Frequency Range

40Hz ~ 2000Hz

Nominal Diameter	18" / 465 mm
Impedance	8 Ω / 6.8 Ω
Power RMS	2200 W
Magnet	280*140*25/ Y35
Basket Material	Aluminum
Net Weight	20.8 Kg.

## AD-12X302M



### Max Power

600 W

### Voice Coil

60.6mm 2.5"

### Sensitivity

97 ± 2dB

### Frequency Range

55Hz ~ 4000Hz

Nominal Diameter	12" / 310 mm
Impedance	8 Ω / 5 Ω
Power RMS	300 W
Magnet	169*80*20 / Y35
Basket Material	Aluminum
Gross Weight	4.8 Kg.

## AD-12X403M

**Max Power**

800 W

**Voice Coil**

75.8 mm / 3"

**Sensitivity**

96 ± 2dB

**Frequency Range**

55Hz ~ 3000Hz

Nominal Diameter	12" / 320 mm
Impedance	8 Ω / 6.2 Ω
Power RMS	400 W
Magnet	190*90*20 / Y35
Basket Material	Aluminum
Gross Weight	7.0 Kg.

## AD-12X507MB

**Max Power**

1000 W

**Voice Coil**

86.5 mm / 3.5"

**Sensitivity**

96 ± 2dB

**Frequency Range**

45Hz ~ 3000Hz

Nominal Diameter	12" / 320 mm
Impedance	8 Ω / 5.8 Ω
Power RMS	500 W
Magnet	190*95*20 / Y35
Basket Material	Aluminum
Gross Weight	6.1 Kg.

## AD-12X604MG

**Max Power**

1200 W

**Voice Coil**

100 mm / 4"

**Sensitivity**

97 ± 2dB

**Frequency Range**

45Hz ~ 4500Hz

Nominal Diameter	12" / 312 mm
Impedance	8 Ω / 5.6 Ω
Power RMS	600 W
Magnet	220*110*20 / Y35
Basket Material	Aluminum
Net Weight	9.4 Kg.

## AD-1580PD AVENGER

**Max Power**

3000 W

**Voice Coil**

127 mm / 5"

**Sensitivity**

96.5 ± 2dB

**Frequency Range**

40Hz ~ 3000Hz

Nominal Diameter	15" / 390 mm
Impedance	8 Ω / 6.2 Ω
Power RMS	1500 W
Magnet	280*140*25 / Y35
Basket Material	Aluminum
Gross Weight	18.3 Kg.

## AD-15X350MG

**Max Power**

700 W

**Voice Coil**

75.5mm / 3"

**Sensitivity**

96 ± 2dB

**Frequency Range**

40Hz ~ 3000Hz

Nominal Diameter	15" / 388 mm
Impedance	8 Ω / 5.6 Ω
Power RMS	350 W
Magnet	170*86*20 / Y35
Basket Material	Aluminum
Gross Weight	5.4 Kg

## AD-15X401M

**Max Power**

800 W

**Voice Coil**

75.8mm / 3"

**Sensitivity**

98 ± 2dB

**Frequency Range**

38Hz ~ 4500Hz

Nominal Diameter	15" / 393 mm
Impedance	8 Ω / 5.3 Ω
Power RMS	400 W
Magnet	190*90*20 / Y35
Basket Material	Aluminum
Gross Weight	7.6 Kg.

## AD-15X404M

**Max Power**

800 W

**Voice Coil**

75.5mm / 3"

**Sensitivity**

98 ± 2dB

**Frequency Range**

42Hz ~ 3000Hz

Nominal Diameter	15" / 388 mm
Impedance	8 Ω / 5.6 Ω
Power RMS	400 W
Magnet	190*85*20 / Y35
Basket Material	Aluminum
Net Weight	7.0 Kg.

## AD-15X508MB

**Max Power**

1000 W

**Voice Coil**

86.5mm / 3.5"

**Sensitivity**

96 ± 2dB

**Frequency Range**

40Hz ~ 2500Hz

Nominal Diameter	15" / 393 mm
Impedance	8 Ω / 5.8 Ω
Power RMS	500 W
Magnet	190*95*20 / Y35
Basket Material	Aluminum
Gross Weight	6.7 Kg.

## AD-15X600G



**Max Power**

1200 W

**Voice Coil**

100mm / 4"

**Sensitivity**

100 ± 2dB

**Frequency Range**

49Hz ~ 2800Hz

Nominal Diameter	15" / 395 mm
Impedance	8 Ω / 5.6 Ω
Power RMS	600 W
Magnet	220*110*25/Y35
Basket Material	Aluminum
Gross Weight	12.0 Kg.

## AD-1852PD CHROME



**Max Power**

4000W

**Voice Coil**

75.8mm / 3"

**Sensitivity**

98 ± 2dB

**Frequency Range**

42Hz ~ 2000Hz

Nominal Diameter	18" / 487 mm
Impedance	8Ω / 5.6Ω
Power RMS	2000 W
Magnet	190*90*20 / Y35
Basket Material	Aluminum
Gross Weight	20.1kg

## AD-1864PD AVENGER



**Max Power**

4800 W

**Voice Coil**

135mm / 5.5"

**Sensitivity**

97.5 ± 2dB

**Frequency Range**

35Hz ~ 2500Hz

Nominal Diameter	18" / 460 mm
Impedance	8 Ω / 5.8 Ω
Power RMS	2400 W
Magnet	280*140*25 / Y35
Basket Material	Aluminum
Net Weight	22.4 Kg.

## AD-1878PD AVENGER



**Max Power**

5600 W

**Voice Coil**

135mm / 5.5"

**Sensitivity**

97.5 ± 2dB

**Frequency Range**

35Hz ~ 2500Hz

Nominal Diameter	18" / 460 mm
Impedance	8 Ω / 5.8 Ω
Power RMS	2800 W
Magnet	280*140*40 / Y35
Basket Material	Aluminum
Gross Weight	24.6 Kg.

## AD-1882PD CHROME



**Max Power**

5000 W

**Voice Coil**

152mm / 6"

**Sensitivity**

96 ± 2dB

**Frequency Range**

50Hz ~ 1000Hz

Nominal Diameter	18" / 487 mm
Impedance	8 Ω / 5.2 Ω
Power RMS	2500 W
Magnet	330*170*30 / Y35
Basket Material	Aluminum
Gross Weight	28.7 Kg.

## AD-18D1500



**Max Power**

3000W

**Voice Coil**

100mm / 4"

**Sensitivity**

97 ± 2dB

**Frequency Range**

40Hz ~ 1500Hz

Nominal Diameter	18" / 476 mm
Impedance	8 Ω / 5.6 Ω
Power RMS	1500 W
Magnet	220*110*40/ Y35
Basket Material	Aluminum
Gross Weight	17.3 Kg.

## AD-18TBW100



**Max Power**

3000 W

**Voice Coil**

100mm / 4"

**Sensitivity**

96 ± 2dB

**Frequency Range**

40Hz ~ 2500Hz

Nominal Diameter	18" / 460 mm
Impedance	8 Ω / 5.2 Ω
Power RMS	1500 W
Magnet	220*110*30/ Y35
Basket Material	Aluminum
Net Weight	14.9 Kg.

## AD-18X1501S



**Max Power**

3600 W

**Voice Coil**

114.5mm / 4.5"

**Sensitivity**

98 ± 2dB

**Frequency Range**

35Hz ~ 2000Hz

Nominal Diameter	18" / 460 mm
Impedance	8 Ω / 5.4 Ω
Power RMS	1800 W
Magnet	253*140*30 / Y35
Basket Material	Aluminum
Gross Weight	17.1 Kg.

## AD-18X1000G



### Max Power

2400 W

### Voice Coil

100mm / 4"

### Sensitivity

98 ± 2dB

### Frequency Range

36Hz ~ 2000Hz

Nominal Diameter	18" / 465 mm
Impedance	8 Ω / 5.6 Ω
Power RMS	1200 W
Magnet	220*110*25/Y35
Basket Material	Aluminum
Gross Weight	12.9 Kg.

## AD-18X1505LF



### Max Power

3000 W

### Voice Coil

100mm / 4"

### Sensitivity

98 ± 2dB

### Frequency Range

35Hz ~ 2000Hz

Nominal Diameter	18" / 461 mm
Impedance	8 Ω / 5.4 Ω
Power RMS	1500 W
Magnet	220*110*25 / Y35
Basket Material	Zinc Alloy
Gross Weight	11.9 Kg.

## AD-18X2210S



### Max Power

4400 W

### Voice Coil

130 mm / 5.3"

### Sensitivity

97 ± 2dB

### Frequency Range

44Hz ~ 2000Hz

Nominal Diameter	18" / 463 mm
Impedance	8 Ω / 5.1 Ω
Power RMS	2200 W
Magnet	280*140*25 / Y35
Basket Material	Aluminum
Net Weight	20.1 Kg.

## AD-2160PD CHROME



### Max Power

5000 W

### Voice Coil

152mm / 6"

### Sensitivity

96 ± 2dB

### Frequency Range

37Hz ~ 1500Hz

Nominal Diameter	21" / 568 mm
Impedance	8 Ω / 5.4 Ω
Power RMS	2500 W
Magnet	330*170*30/ Y35
Basket Material	Aluminum
Gross Weight	30.6 Kg.

## AD-2182PD AVENGER



### Max Power

7600 W

### Voice Coil

152mm / 6"

### Sensitivity

98 ± 2dB

### Frequency Range

35Hz ~ 2000Hz

Nominal Diameter	21" / 550 mm
Impedance	8 Ω / 5.8 Ω
Power RMS	3800 W
Magnet	300*170*50 / Y35
Basket Material	Aluminum
Gross Weight	32.6 Kg.

## AD-21NW151



### Max Power

6000 W

### Voice Coil

152mm / 6"

### Sensitivity

97 ± 2dB

### Frequency Range

30Hz ~ 1500Hz

Nominal Diameter	21" / 570 mm
Impedance	8 Ω / 5.8 Ω
Power RMS	3000 W
Magnet	145*60*15 / N45
Basket Material	Aluminium
Gross Weight	21.2 Kg.

## AD-21SW152



### Max Power

6400 W

### Voice Coil

152mm / 6"

### Sensitivity

98 ± 2dB

### Frequency Range

35Hz ~ 2000Hz

Nominal Diameter	21" / 550 mm
Impedance	8 Ω / 5.3 Ω
Power RMS	3200 W
Magnet	150*50*15 / N45
Basket Material	Aluminum
Net Weight	15.2 Kg.

## AD-2184PD



### Max Power

7600 W

### Voice Coil

152mm / 6"

### Sensitivity

98 ± 2dB

### Frequency Range

35Hz ~ 2000Hz

Nominal Diameter	21" / 550 mm
Impedance	8 Ω / 5.8 Ω
Power RMS	3800 W
Magnet	300*170*50 / Y35
Basket Material	Aluminum
Gross Weight	37.8 Kg.

## 15X825G



**Max Power**

1600 W

**Voice Coil**

4 In/Out

**Sensitivity**

100dB

**Frequency Range**

35Hz ~ 2000Hz

Nominal Diameter	15" / 390 mm
Impedance	8 Ω
Power RMS	800 W
Magnet	220*110*25mm
Basket Material	Aluminum
Gross Weight	133 Kg.

## AD-1886PD Pro



**Max Power**

6000 W

**Voice Coil**

6 In/Out

**Sensitivity**

96dB

**Frequency Range**

35Hz ~ 2000Hz

Nominal Diameter	18" / 487 mm
Impedance	8 Ω
Power RMS	3000 W
Magnet	330*170*30mm
Basket Material	Aluminum
Gross Weight	32.1 Kg.

## AD-15X1150SR



**Max Power**

2300W

**Voice Coil**

4" (99.2mm)

**Sensitivity**

98±2dB

**Frequency Range**

45Hz-3kHz

Nominal Diameter	15" (393mm)
Impedance	8Ω / 5.3Ω
Power RMS	1150W
Magnet	220*110*25/Y35
Basket Material	Aluminum
Gross Weight	12.8KG

## AD-15X650M



**Max Power**

1300W

**Voice Coil**

4" (100mm)

**Sensitivity**

96

**Frequency Range**

49Hz-2kHz

Nominal Diameter	15"/395mm
Impedance	8Ω
Power RMS	650W
Magnet	220*110*25
Basket Material	Aluminum
Net Weight	12KG

## AD - 2166PD PRO

**Max Power**

6000 w

**Voice Coil**

6 In/Out

**Sensitivity**

96dB

**Frequency Range**

35Hz ~ 2000Hz

Nominal Diameter	21" / 568 mm
Impedance	8 Ω
Power RMS	3000 W
Magnet	330*170*30mm
Basket Material	Aluminum
Gross Weight	35.9 Kg.

## AD-1856PD Pro

**Max Power**

4800 W

**Voice Coil**

5 In/Out

**Sensitivity**

98dB

**Frequency Range**

35Hz ~ 2000Hz

Nominal Diameter	18" / 487 mm
Impedance	8 Ω
Power RMS	2400 W
Magnet	280*140*25mm
Basket Material	Aluminum
Gross Weight	23.6Kg.

# FERRITE DRIVER

## 750K



### Mag. Material

Strontium Ferrite  
Y35

### Voice Coil

74.5mm/ 3" CCAR

### Sensitivity

108±2db

### Frequency Range

800Hz-20KHz

Throat Diameter	50mm/ 2 Inch
Impedance	8Ω/6.2Ω
Watts (RMS)	120w

## 850K



### Mag. Material

Strontium Ferrite  
Y35

### Voice Coil

74.5mm/ 3" CCAR

### Sensitivity

108 ±2db

### Frequency Range

800Hz-20KHz

Throat Diameter	50mm/ 2 Inch
Impedance	8Ω/6.2Ω
Watts (RMS)	120w

## AD-450S



### Mag. Material

Strontium Ferrite  
Y35

### Voice Coil

44.4mm/1.75" CCAW

### Sensitivity

106 ± 2db

### Frequency Range

1.5Hz-20KHz

Throat Diameter	25mm/1 Inch
Impedance	80/60
Watts (RMS)	60w

## AD-550C



### Mag. Material

Strontium Ferrite  
Y35

### Voice Coil

51.3mm/ 2" CCAW

### Sensitivity

108 ± 2db

### Frequency Range

1.2Hz-20KHz

Throat Diameter	25.4mm/ 1 Inch
Impedance	8Ω/ 7Ω
Watts (RMS)	80w

## AD-560S



### Mag. Material

Strontium Ferrite  
Y35

### Voice Coil

51.3mm/2" CCAW

### Sensitivity

108 ± 2db

### Frequency Range

1.2Hz-20KHz

Throat Diameter	25.4mm/1 Inch
Impedance	8 Ω / 7 Ω
Watts (RMS)	80w

## AD-7245



### Mag. Material

Strontium Ferrite  
Y35

### Voice Coil

72.5mm/3" CCAW

### Sensitivity

108 ± 2db

### Frequency Range

800Hz-20KHz

Throat Diameter	50mm/2 Inch
Impedance	8 Ω / 6.2 Ω
Watts (RMS)	120w

## AD-850N



### Mag. Material

Strontium Ferrite  
V35

### Voice Coil

3" (74.5mm) CCAR

### Sensitivity

108dB ±2dB

### Frequency Range

800Hz-20kHz (±3dB)

Throat Diameter	2" (50mm)
Impedance	8Ω / 6.2Ω
Watts (RMS)	140W

## AD-551XLS



### Mag. Material

Strontium Ferrite  
Y35

### Voice Coil

51.3 mm / 2"

### Sensitivity

108 ± 2dB

### Frequency Range

800Hz ~ 16000Hz

Throat Diameter	25 mm / 1 inch
Impedance	8 Ω / 6.5 Ω
Watts (RMS)	100 W

## AD-761XLS

**Mag. Material**

Strontium Ferrite  
Y35

**Voice Coil**

72.5 mm / 3"

**Sensitivity**

108 ± 2dB

**Frequency Range**

800Hz ~ 20000Hz

Throat Diameter	50 mm / 2 inch
-----------------	----------------

Impedance	8 Ω / 6 Ω
-----------	-----------

Watts (RMS)	140 W
-------------	-------

## 751LEX

**Mag. Material**

Strontium Ferrite  
Y35

**Voice Coil**

72.5 mm / 3"

**Sensitivity**

108 ± 2dB

**Frequency Range**

800Hz ~ 20000Hz

Throat Diameter	50 mm / 2 inch
-----------------	----------------

Impedance	8 Ω / 6 Ω
-----------	-----------

Watts (RMS)	140 W
-------------	-------

## AD-7242

**Mag. Material**

Strontium Ferrite  
Y35

**Voice Coil**

72.5mm 3"

**Sensitivity**

108 ± 2dB

**Frequency Range**

800Hz ~ 20000Hz

Throat Diameter	50 mm / 2 inch
-----------------	----------------

Impedance	8 Ω / 6.2 Ω
-----------	-------------

Watts (RMS)	120 W
-------------	-------

## AD-750TN

**Mag. Material**

Strontium Ferrite  
Y35

**Voice Coil**

74.5mm / 3"

**Sensitivity**

108 ± 2dB

**Frequency Range**

800Hz ~ 20000Hz

Throat Diameter	50 mm / 2 inch
-----------------	----------------

Impedance	8 Ω / 6.2 Ω
-----------	-------------

Watts (RMS)	140 W
-------------	-------

## AD-561XLS



### Mag. Material

Strontium Ferrite  
Y35

### Sensitivity

108 ± 2dB

### Voice Coil

51.3 mm 2"

### Frequency Range

800Hz ~ 16000Hz

Throat Diameter	25 mm / 1 inch
Impedance	8 Ω / 7 Ω
Watts (RMS)	100 W

## AD-440C



### Mag. Material

Strontium Ferrite  
Y35

### Sensitivity

108 ± 2dB

### Voice Coil

72.5 mm / 3"

### Frequency Range

800Hz ~ 20000Hz

Throat Diameter	50 mm / 2 inch
Impedance	8 Ω / 6.2 Ω
Watts (RMS)	120 W

# NEODYMIUM DRIVER

## 780TN



Diaphragm Compression  
Driver Model - 3"

**Impedance**  
8 ohm

**Power RMS**  
120 Watts

## AD-2408H



**Mag. Material**  
Strontium Ferrite  
Y35

**Voice Coil**  
38 mm / 1.5"

**Sensitivity**  
108 ± 2dB

**Frequency Range**  
900Hz ~ 18000Hz

Throat Diameter	25 mm / 1 inch
Impedance	8 Ω / 6.2 Ω
Watts (RMS)	60 W

## ADX-D2



Diaphragm Compression  
Driver Model - 3"

**Impedance**  
8 ohm

**Power RMS**  
160 Watts

## AD-400TN



**Mag. Material**  
NdFeb N45

**Voice Coil**  
44.4mm / 1.75"

**Sensitivity**  
110 ± 2dB

**Frequency Range**  
800Hz ~ 16000Hz

Throat Diameter	25 mm / 1 inch
Impedance	8 Ω / 6.2 Ω
Watts (RMS)	80W

## AD-800TN



### Mag. Material

NdFeb N45

### Voice Coil

74.5mm / 3"

### Sensitivity

108 ± 2dB

### Frequency Range

800Hz ~ 20000Hz

Throat Diameter	36 mm / 1.5 inch
-----------------	------------------

Impedance	8 Ω / 6.5 Ω
-----------	-------------

Watts (RMS)	140 W
-------------	-------

# SUPER PRESSURE MID DRIVER

## AD-4599



### RMS Power

450W

### Voice Coil

89mm/3.5"

### Sensitivity

123±2dB

### Frequency Range

200Hz-9KHz

Diameter	50mm/2 Inch
----------	-------------

Impedance	8 Ω / 6.2 Ω
-----------	-------------

## AD-4599EX PRO



### Max Volume

160W/1m/35.7V  
135dB

### Voice Coil

200Hz ~ 8000Hz

### Sensitivity

2X1W/1m 123dB

### Frequency Range

200Hz ~ 8000Hz

Throat Diameter	50.8 mm / 2 inch
-----------------	------------------

Impedance	2x 16 Ω
-----------	---------

Watts (RMS)	120w
-------------	------

## AD-6599ex



**Power**  
650w

**Voice Coil**  
2x99.2mm

**Sensitivity**  
123dB

**Frequency Range**  
200-7000Hz

Diameter	2"(50.8mm)
Impedance	2x16Ω
Net weight	4.6kg

## AD-4599HD



**Power**  
450 Watt

**Impedance**  
8Ω

# AMPLIFIERS



## ADJ – 801

8Ω Stereo	2x680W	Input Impedance	20K Ω
4Ω Stereo	2x900W	Cross Talk	>90dB@1KHz
8Ω Bridge	1500W	Damping Factor	600
4Ω Bridge	1800W*	Rack Space	2U
Output Circuitry	class H	Net Weight	22.5Kg.
Frequency Respons	20-20KHz (±0.3dB)	Gross Weight	25.5KG
Input Sensitivity	0.775V/1.0V/1.4V		



## RL – 3800AD

8Ω Stereo	2x800W	Input Impedance	20K Ω
4Ω Stereo	2x1100W	Cross Talk	>90dB@1KHz
8Ω Bridge	2200W	Damping Factor	800
4Ω Bridge	2700W*	Rack Space	2U
Output Circuitry	class H	Net Weight	24Kg.
Frequency Respons	20-20KHz (±0.3dB)	Gross Weight	27.5Kg.
Input Sensitivity	0.775V/1.0V/1.4V	2Ω Stereo	2x1400W



## RL - 4600AD

8Ω Stereo	2x1000W
4Ω Stereo	2x1580W
8Ω Bridge	3110W
4Ω Bridge	3700W*
Output Circuitry	Class H
Frequency Respons	20-20KHz (±0.3dB)
Input Sensitivity	0.775V/1.0V/1.4V

Input Impedance	20K Ω
Cross Talk	>90dB@1KHz
Damping Factor	800
Rack Space	3U
Net Weight	33.5Kg.
Gross Weight	38Kg.
2Ω Stereo	2x1950W



## RL-5700AD

8Ω Stereo	2x1200W
4Ω Stereo	2x1950W
8Ω Bridge	3750W
4Ω Bridge	4650W*
Output Circuitry	class H
Frequency Respons	20-20KHz (±0.3dB)
Input Sensitivity	0.775V/1.0V/1.4V

Input Impedance	20K Ω
Cross Talk	>90dB@1KHz
Damping Factor	1000
Rack Space	3U
Net Weight	33.5Kg.
Gross Weight	38KG
2Ω Stereo	2x2400W



## RL-7000AD

8Ω Stereo	2x1450W
4Ω Stereo	2x2280W
8Ω Bridge	4500W
4Ω Bridge	5300W*
Output Circuitry	Class H
Frequency Respons	20-20KHz (±0.3dB)
Input Sensitivity	0.775V/1.0V/1.4V

Input Impedance	20K Ω
Cross Talk	>90dB@1KHz
Damping Factor	1200
Rack Space	3U
Net Weight	36Kg.
Gross Weight	40Kg.
2Ω Stereo	2x2680W



## RL-7800AD

8Ω Stereo	2x1850W
4Ω Stereo	2x2950W
8Ω Bridge	5800W
4Ω Bridge	7800W*
Output Circuitry	class H
Frequency Respons	20-20KHz (±0.3dB)
Input Sensitivity	0.775V/1.0V/1.4V

Input Impedance	20K Ω
Cross Talk	>90dB@1KHz
Damping Factor	1300
Rack Space	3U
Net Weight	44Kg.
Gross Weight	48.5KG
2Ω Stereo	2x3800W



## BDT-8800AD

8Ω Stereo	4x920W
4Ω Stereo	4x1450W
8Ω Bridge	2x1800W
4Ω Bridge	2x2800W
Output Circuitry	Class H
Frequency Respons	20– 20KHz (±0.3dB)
Input Sensitivity	0.775V/1.0V/1.4V

Input Impedance	20K Ω
Cross Talk	>90dB@1KHz
Damping Factor	800
Rack Space	2U
Net Weight	27Kg.
Gross Weight	30.5Kg.



## BDT-8800Pro

8Ω Stereo	4x920W
4Ω Stereo	4x1450W
8Ω Bridge	2x1800W*
4Ω Bridge	2800W
Output Circuitry	class H
Frequency Respons	20Hz-20KHz±0.5dB
Input Sensitivity	0.775V/1.0V/1.4V

Input Impedance	20kΩ / 10kΩ
Cross Talk	>65dB 80 1KHz
Damping Factor	>800
Rack Space	2U
Net Weight	28.5KG
Gross Weight	32KG
THD %	0.05%



## ADT-8850

8Ω Stereo	4 × 1500W
4Ω Stereo	4 × 1680W
8Ω Bridge	2 × 1950W
4Ω Bridge	2 × 3150W*
Output Circuitry	Class D/HD
Frequency Respons	20 – 20kHz (±0.3dB)
Input Sensitivity	0.775V / 26dB / 32dB

Input Impedance	20K Ω
Cross Talk	>90dB@1KHz
Damping Factor	≥700
Rack Space	2U
Net Weight	27.5 kg
THD	0.03% @ 8Ω
S/N Ratio	≥103dB



## ADMT-1602

8Ω Stereo	2x1800W
4Ω Stereo	2x2800W
8Ω Bridge	5600W
4Ω Bridge	7000W*
Output Circuitry	class H
Frequency Respons	20-20KHz+0/-1 dB
Input Sensitivity	0.75V/1.0V/1.4V

Input Impedance	20K Ω
Cross Talk	≤62dB 8Ω 1KHz
Damping Factor	≥1300
Rack Space	3U
Net Weight	39.5Kg.
Gross Weight	42.5KG
2Ω Stereo	2x3500W*
THD %	0.05%@8Ω



## ADMT – 1802

8Ω Stereo	2x2200W
4Ω Stereo	2x3700W
8Ω Bridge	6400W
4Ω Bridge	8200W*
Output Circuitry	Class H
Frequency Respons	20Hz-20KHz+0/-1dB
Input Sensitivity	0.75V/1.0/1.4V

Input Impedance	20K Ω
Cross Talk	≤62dB 8Ω 1KHz
Damping Factor	≥1800
Rack Space	3U
Net Weight	39.5Kg.
THD	0.05%@8Ω
2Ω Stereo	2x4050W*
Gross Weight	42.5KG



## AD-9000

8Ω Stereo	2X2100W
4Ω Stereo	2x3850W
8Ω Bridge	4800W
4Ω Bridge	7100W*
Output Circuitry	class D/HD
Frequency Respons	20-20KHz+0/-1dB
Input Sensitivity	0.75V/1.0/1.4V

Input Impedance	20K Ω
Cross Talk	≤62dB 8Ω 1KHz
Damping Factor	≥3000
THD %	0.05%@8Ω
S/N Ratio	109 dB
Gross Weight	39 Kg
2Ω Stereo	2x5200W*



## XH-SERIES (AD-9900)

8Ω Stereo	2X2200W
4Ω Stereo	2x3900W
8Ω Bridge	5000W
4Ω Bridge	7300W*
Output Circuitry	Class D/HD
Frequency Respons	20-190HZ+0/-1dB
Input Sensitivity	0.75V/1.0/1.4V

Input Impedance	20K Ω
Cross Talk	≤62dB 8Ω 1KHz
Damping Factor	≥3500
Rack Space	3U
Gross Weight	39 Kg
THD	0.05%@8Ω
2Ω Stereo	2x5500W*



## XX 16000 AD

8Ω Stereo	2 × 4000W
4Ω Stereo	2 × 7000W
8Ω Bridge	8900W
Output Circuitry	Class D/HD
Frequency Respons	20-300KHz±0.3dB

Damping Factor	>3500
2Ω Stereo	2 × 8100W*
4Ω Bridge	14200W*



## XX-14000AD

8Ω Stereo	2 × 3200W
4Ω Stereo	2 × 6200W
8Ω Bridge	7300W
4Ω Bridge	13000W*
Output Circuitry	Class D/HD
Frequency Respons	20Hz-190KHz+0/-1dB
Input Sensitivity	0.75V/1.0/1.4V

Input Impedance	20K Ω
Cross Talk	≤92dB 8Ω 1KHz
Damping Factor	≥3500
Rack Space	3U
Gross Weight	46.1 kg
THD	0.05% @ 8 Ω
2Ω Stereo	2 × 7400W*
S/N Ratio	109 dB



## XX-12000AD

8Ω Stereo	2 × 2800W
4Ω Stereo	2 × 5600W
8Ω Bridge	6200W
4Ω Bridge	8900W*
Output Circuitry	Class D/HD
Frequency Respons	20Hz-300Hz (±0.3dB)
Input Sensitivity	0.775V / 1.0V / 1.5V

Input Impedance	20K Ω
Cross Talk	≤62dB 8Ω 1KHz
Damping Factor	≥3500
THD %	0.05% @ 8Ω
S/N Ratio	≥100dB
Gross Weight	45 kg
2Ω Stereo	2 × 6200W*
Rack Space	3U



## XX-10200AD

8Ω Stereo	2 × 2250W
4Ω Stereo	2 X 4000W
8Ω Bridge	5400W

4Ω Bridge	7500W
Output Circuitry	Class D/HD
Frequency Respons	10–300Hz /±0.3DB



## ADMT – 2202

8Ω Stereo	2 × 3200W
4Ω Stereo	2 × 4700W
8Ω Bridge	7400W

Damping Factor	≥1800
4Ω Bridge	9500W*
2Ω Stereo	2 × 5800W

# CROSSOVER



## AD-234XS

Input Connectors	XLR
Input Type	Electronically balanced/unbalanced, RF filtered
Input Impedance	Balanced >50k ohm, unbalanced >25k ohm
Max Input	>+22dBu balanced or unbalanced
CMRR	>40dB, typically >55dB at 1kHz
Output Connectors	XLR
Output Impedance	Balanced 60 ohm, unbalanced 30 ohm
Max Output	>+21dBu balanced/unbalanced into 2k ohms or greater
Bandwidth	20Hz to 20kHz, +/-0.5dB
Frequency Response	< 3 Hz to > 90 kHz, +0/-3 dB
Signal to Noise Ratio	Ref: +4 dBu, 22 kHz measurement bandwidth
Dynamic Range	> 106 dB, unweighted, any output
THD+Noise	< 0.004% at +4 dBu, 1 kHz; < 0.04% at +20 dBu, 1 kHz
Crossover Frequencies	Low/Mid: 45 to 960 Hz or 450 Hz to 9.6 kHz (x10 setting); Low/High: 45 to 960 Hz or 450 Hz to 9.6 kHz (x10 setting); Mid/High 450Hz to 9.6kHz (x10 setting)
Operating Voltage	230 VAC 50/60Hz
Net Weight	1.8 Kg.
Gross Weight	2.6 Kg.



## AD-201DiSi

2 In / 10 Out Distribution	Input Imp: 50kΩ(Bal), 25kΩ(unbal)
Stereo/Mono Input Option	Output Imp: 220Ω(Unbal)
Individual Output Gain Control	Freq Responce: 0.35Hz-220Hz (+0/-3dB)
XLR/TRS Combo Inputs	SNR: >100Bu(22Hz-22kHz)
XLR/TRS Combo Outputs	THD:0.04%@4dBu,1kHz
Ultra-Low Harmonic Distortion	



## SR462-AD

Dual 31 Band Graphic Equalizer	1/3 Octave Bandwidth EQ Bypass switch
Subwoofer Output With Crossover	Range +12 dB or +6 dB select Option
Constant "Q" design	18 dB / octave Highpass Filter
20 Hz – 20 kHz Full band support	Signal / Clip indicator
1/3 Octave Bandwidth	
Balanced XLR - TRS input	



## AD260

Input Imp.	40k Ohm	Dynamic Range	10 dB / >107dB
Frequency	20Hz - 20khz, +/-0.5	Max Input	+30dBu+30 Position
Max Output	+22dBu		



## SR - 430QX

Dual 15-Band EQ

- Constant Q Design
- 50Hz Low-Cut, 12dB/Oct
- Balanced XLR In/Out
- Balanced 1/4In, Impedance-Balanced Out
- ISO 2/3 Octave Centers

- 20mm faders
- Input Impedance: 40k $\Omega$  (Bal), 20k $\Omega$  (Unbal)
- Max Output: +21 dBu (Bal/Unbal)
- THD: 0.006% @1kHz
- S/N Ratio: >90 dB (ref. 0.0775Vrms)
- Switching: FET In/Out & Filter