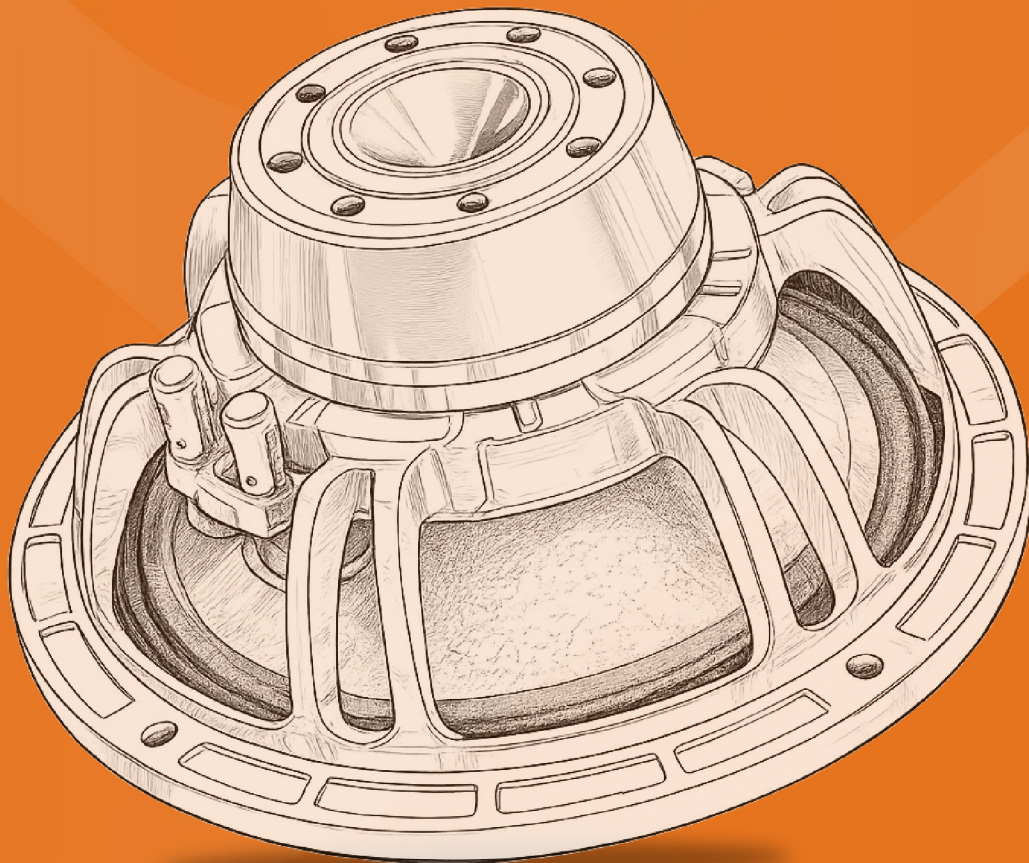




# CATALOUGE

## 2026

**Think** Music **Think** Audiotone.



# ATOMIC SERIES

## 15X1025YX



**Max Power**  
2100W

**Voice Coil**  
4" (99.2mm)

**Sensitivity**  
98±2dB

**Frequency Range**  
45Hz-3kHz

Nominal Diameter	15" (393mm)
Impedance	8Ω / 5.3Ω
Power RMS	1050W
Magnet	220*110*25/Y35
Basket Material	Aluminum
Gross Weight	12.9KG

## 15X1255YX



**Max Power**  
2500W

**Voice Coil**  
4.5" (114.5mm)

**Sensitivity**  
98±2dB

**Frequency Range**  
35Hz-2kHz

Nominal Diameter	15" (393mm)
Impedance	8Ω / 5.1Ω
Power RMS	1250W
Magnet	253*140*25/Y35
Basket Material	Aluminum
Gross Weight	16.5KG

## 18X2125YX



**Max Power**  
4200 W

**Voice Coil**  
127mm / 5"

**Sensitivity**  
97 ± 2dB

**Frequency Range**  
35Hz ~ 2000Hz

Nominal Diameter	18" / 465 mm
Impedance	8 Ω / 5.2 Ω
Power RMS	2100 W
Magnet	280*140*25/ Y35
Basket Material	Aluminum
Net Weight	20.3 Kg.

## 18X2530YX



**Max Power**  
5000 W

**Voice Coil**  
127mm / 5"

**Sensitivity**  
97.5 ± 2dB

**Frequency Range**  
35Hz ~ 2000Hz

Nominal Diameter	18" / 465 mm
Impedance	8 Ω / 5.2 Ω
Power RMS	2500 W
Magnet	280x140x50/ Y35
Basket Material	Aluminum
Gross Weight	26.9 Kg.

## AD-18N127XY

**Max Power**

4400 W

**Voice Coil**

127mm / 5"

**Sensitivity**

98 ± 2dB

**Frequency Range**

35Hz ~ 2000Hz

Nominal Diameter	18" / 465 mm
Impedance	8 Ω / 5.2 Ω
Power RMS	2200 W
Magnet	120*50*15 / N45
Basket Material	Aluminum
Gross Weight	12.9 Kg.

## AD-18X2335YX

**Max Power**

4700 W

**Voice Coil**

135mm / 5.5"

**Sensitivity**

98 ± 2dB

**Frequency Range**

30Hz ~ 1500Hz

Nominal Diameter	18" / 465 mm
Impedance	8 Ω / 5.3 Ω
Power RMS	2350 W
Magnet	300*170*25/ Y35
Basket Material	Aluminum
Gross Weight	23.4 Kg.

## AD-18X2740YX

**Max Power**

5500 W

**Voice Coil**

135mm / 5.5"

**Sensitivity**

98.5 ± 2dB

**Frequency Range**

30Hz ~ 1500Hz

Nominal Diameter	18" / 465 mm
Impedance	8 Ω / 5.3 Ω
Power RMS	2750 W
Magnet	300*170*50/ Y35
Basket Material	Aluminum
Net Weight	30.9 Kg.

## AD-18X2645YX

**Max Power**

5200 W

**Voice Coil**

152 mm / 6"

**Sensitivity**

98.5 ± 2dB

**Frequency Range**

30Hz ~ 1500Hz

Nominal Diameter	18" / 465 mm
Impedance	8 Ω / 5.3 Ω
Power RMS	2600 W
Magnet	330*170*25/ Y35
Basket Material	Aluminum
Gross Weight	27.8 Kg.

## AD-18X3155YX

DOUBLE  
MAGNET

**Max Power**

6200 W

**Voice Coil**

152mm / 6"

**Sensitivity**

98.5 ± 2dB

**Frequency Range**

30Hz ~ 1500Hz

Nominal Diameter	18" / 465 mm	Magnet	330*170*50 / Y35
Impedance	8 Ω / 5.3 Ω	Basket Material	Aluminum
Power RMS	3100 W	Gross Weight	37.5 Kg.

## AD-1885PD CROME

**Max Power**

5600 W

**Voice Coil**

152mm

**Sensitivity**

96dB

**Frequency Range**

48Hz ~ 1.6KHz

Nominal Diameter	18" / 487 mm	Magnet	330*170*30
Impedance	8 Ω	Basket Material	Aluminum
Power RMS	2800 W	Gross Weight	32.1Kg.

# EXCLUSIVE SERIES

## AD-15X830ES



**Max Power**  
1600W

**Voice Coil**  
100mm / 4"

**Sensitivity**  
96 ± 2dB

**Frequency Range**  
42Hz ~ 2000Hz

Nominal Diameter	15" / 402 mm
Impedance	8 Ω
Power RMS	800W
Magnet	220x110x25 mm
Basket Material	Aluminum
Net Weight	12.6 kg

## AD-15X410ES



**Max Power**  
800 W

**Voice Coil**  
75.8mm / 3"

**Sensitivity**  
97 ± 2dB

**Frequency Range**  
45Hz ~ 3000Hz

Nominal Diameter	15" / 393 mm
Impedance	8 Ω / 5.6 Ω
Power RMS	400 W
Magnet	190*85*20 / Y35
Basket Material	Aluminum
Gross Weight	7.4 Kg.

## AD-15X1030ES



**Max Power**  
2000 W

**Voice Coil**  
4" in/out

**Sensitivity**  
96dB

**Frequency Range**  
42Hz ~ 2000Hz

Nominal Diameter	15" / 402mm
Impedance	8 Ω
Power RMS	1000 W
Magnet	220*110*25
Basket Material	Aluminum
Net Weight	13.9 Kg.

## AD-18X1240ES



**Max Power**  
2400 W

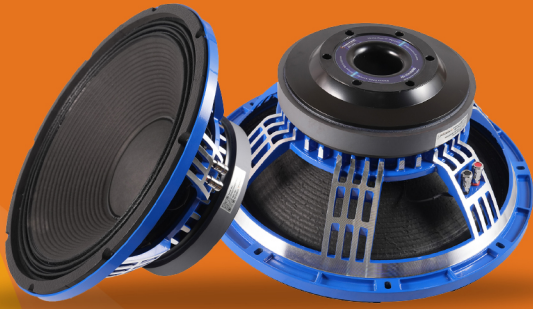
**Voice Coil**  
100mm / 4"

**Sensitivity**  
98 ± 2dB

**Frequency Range**  
35Hz ~ 2000Hz

Nominal Diameter	18" / 465 mm
Impedance	8 Ω / 5.6 Ω
Power RMS	1200 W
Magnet	220*110*25 / Y35
Basket Material	Aluminum
Gross Weight	15.2 Kg.

## AD-15X1020ES



**Max Power**

2000 W

**Voice Coil**

99.2mm / 4"

**Sensitivity**

98 ± 2dB

**Frequency Range**

45Hz ~ 3000Hz

Nominal Diameter	15" / 393 mm
Impedance	8 Ω / 5.6 Ω
Power RMS	1000 W
Magnet	220*110*25/ Y35
Basket	Aluminium
Net Weight	12.8 Kg.

## AD-15X1250ES



**Max Power**

2400 W

**Voice Coil**

114.5mm / 4.5"

**Sensitivity**

97 ± 2dB

**Frequency Range**

35Hz ~ 2000Hz

Nominal Diameter	15" / 393mm
Impedance	8 Ω / 5.4 Ω
Power RMS	1200 W
Magnet	253*140*25/ Y35
Basket Material	Aluminum
Gross Weight	16.6 Kg.

## AD-1875ES



**Max Power**

4400 W

**Voice Coil**

127mm / 5"

**Sensitivity**

95 ± 2dB

**Frequency Range**

40Hz ~ 2000Hz

Nominal Diameter	18" / 465 mm
Impedance	8 Ω / 6.8 Ω
Power RMS	2200 W
Magnet	280*140*25/ Y35
Basket Material	Aluminum
Net Weight	20.8 Kg.

## AD-1895ES



**Max Power**

5000 W

**Voice Coil**

127mm / 5"

**Sensitivity**

96 ± 2dB

**Frequency Range**

40Hz ~ 2000Hz

Nominal Diameter	18" / 465 mm
Impedance	8 Ω / 6.2 Ω
Power RMS	2500 W
Magnet	280*140*50 / Y35
Basket Material	Aluminum
Gross Weight	27.4 Kg.

## AD-18X1560ES



**Max Power**

3600 W

**Voice Coil**

115mm / 4.5"

**Sensitivity**

97 ± 2dB

**Frequency Range**

40Hz ~ 1500Hz

Nominal Diameter	18" / 465 mm
Impedance	8 Ω / 5.1 Ω
Power RMS	1800 W
Magnet	250*140*25 / Y35
Basket Material	Aluminum
Gross Weight	17.5 Kg.

## AD-18X1520ES



**Max Power**

3600 W

**Voice Coil**

114.5mm / 4.5"

**Sensitivity**

98 ± 2dB

**Frequency Range**

35Hz ~ 2000Hz

Nominal Diameter	18" / 465 mm
Impedance	8 Ω / 5.1 Ω
Power RMS	1800 W
Magnet	253*140*30 / Y35
Basket Material	Aluminum
Gross Weight	17.1 Kg.

## AD-1870ES



**Max Power**

4000 W

**Voice Coil**

127mm / 5"

**Sensitivity**

97 ± 2dB

**Frequency Range**

40Hz ~ 2000Hz

Nominal Diameter	18" / 465 mm
Impedance	8 Ω / 5.6 Ω
Power RMS	2000 W
Magnet	280*140*25 / Y35
Basket Material	Aluminum
Gross Weight	21.0 Kg.

## 18X1570ES



**Max Power**

3600 W

**Voice Coil**

4.5" IN/OUT

**Sensitivity**

94dB

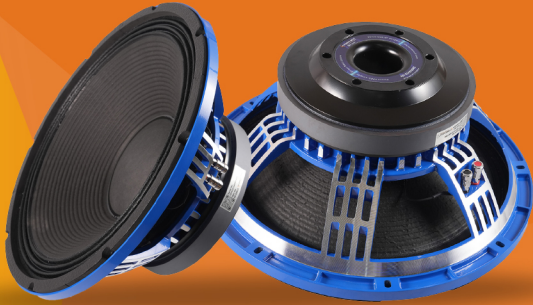
**Frequency Range**

36Hz ~ 1.6kHz

Nominal Diameter	18" / 465 mm
Impedance	8 Ω
Power RMS	1800 W
Magnet	250*140*25
Basket Material	Aluminum
Gross Weight	18.8 Kg.

# DJ SERIES

## AD-15X1020ES



**Max Power**

2000 W

**Voice Coil**

99.2mm / 4"

**Sensitivity**

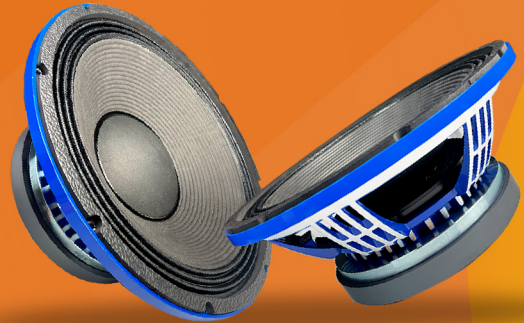
98 ± 2dB

**Frequency Range**

45Hz ~ 3000Hz

Nominal Diameter	15" / 393 mm
Impedance	8 Ω / 5.6 Ω
Power RMS	1000 W
Magnet	220*110*25/ Y35
Basket Material	Aluminum
Gross Weight	12.8 Kg.

## AD-15X1050ES



**Max Power**

2400 W

**Voice Coil**

4.5" / 114.5mm

**Sensitivity**

97dB

**Frequency Range**

35Hz ~ 2000Hz

Nominal Diameter	15" / 393mm
Impedance	8 Ω / 5.4 Ω
Power RMS	1200 W
Magnet	253*140*25/ Y35
Basket Material	Aluminum
Gross Weight	17.9 Kg.

## AD-15X410ES



**Max Power**

800 W

**Voice Coil**

75.8mm / 3"

**Sensitivity**

97 ± 2dB

**Frequency Range**

45Hz ~ 3000Hz

Nominal Diameter	15" / 393 mm
Impedance	8 Ω / 5.6 Ω
Power RMS	400 W
Magnet	190*85*20 / Y35
Basket Material	Aluminum
Gross Weight	7.4 Kg.

## AD-15X510ES



**Max Power**

1000 W

**Voice Coil**

86.5mm / 3.5"

**Sensitivity**

98 ± 2dB

**Frequency Range**

45Hz ~ 3000Hz

Nominal Diameter	15" / 393 mm
Impedance	8 Ω / 4.8 Ω
Power RMS	500 W
Magnet	190*95*25 / Y35
Basket Material	Aluminum
Gross Weight	8.9 Kg.

## AD-18SW115ES

**Max Power**

3600W

**Voice Coil**

114.5mm/ 4.5" In

**Sensitivity**

98 ± 2dB

**Frequency Range**

35Hz to 2000Hz

Nominal Diameter	18" / 465 mm
Impedance	8 Ω / 5.3 Ω
Power RMS	1800W
Magnet	250*140*25 / Y35
Basket Material	Aluminum
Gross Weight	11.0 kg

## AD-18X1520ES

**Max Power**

3600 W

**Voice Coil**

114.5mm / 4.5"

**Sensitivity**

98 ± 2dB

**Frequency Range**

35Hz ~ 2000Hz

Nominal Diameter	18" / 465 mm
Impedance	8 Ω / 5.1 Ω
Power RMS	1800 W
Magnet	253*140*30 / Y35
Basket Material	Aluminum
Gross Weight	17.1 Kg.

# DRIVER COMPONENTS

## AD-10MD26

**Max Power**

800 W

**Voice Coil**

75.5 mm / 3"

**Sensitivity**

98 ± 2dB

**Frequency Range**

61Hz ~ 3800Hz

Nominal Diameter	10" / 262 mm
Impedance	8 Ω / 5.8 Ω
Power RMS	400 W
Magnet	180*85*20 / Y35
Basket Material	Aluminum
Gross Weight	5.4 Kg.

## AD-10N76

**Max Power**

800 W

**Voice Coil**

75.8 mm / 3"

**Sensitivity**

96 ± 2dB

**Frequency Range**

75Hz ~ 5500Hz

Nominal Diameter	10" / 262 mm
Impedance	8 Ω / 6.8 Ω
Power RMS	400 W
Magnet	70*12 / N45
Basket Material	Aluminum
Gross Weight	3.2 Kg.

## AD-12N351

**Max Power**

1200 W

**Voice Coil**

86.5mm / 3.5"

**Sensitivity**

97 ± 2dB

**Frequency Range**

46Hz ~ 3500Hz

Nominal Diameter	12" / 320 mm
Impedance	8 Ω / 5.3 Ω
Power RMS	600 W
Magnet	80*10 / N45
Basket Material	Aluminum
Gross Weight	4.9 Kg.

## AD-12ND76

**Max Power**

1000 W

**Voice Coil**

75.8mm / 3"

**Sensitivity**

98 ± 2dB

**Frequency Range**

46Hz ~ 5500Hz

Nominal Diameter	12" / 310 mm
Impedance	8 Ω / 6.8 Ω
Power RMS	500 W
Magnet	25*12*12/ N45
Basket Material	Aluminum
Gross Weight	4.4 Kg.

## AD-12X201FG

**Max Power**

4400 W

**Voice Coil**

127mm / 5"

**Sensitivity**

95 ± 2dB

**Frequency Range**

40Hz ~ 2000Hz

Nominal Diameter	18" / 465 mm
Impedance	8 Ω / 6.8 Ω
Power RMS	2200 W
Magnet	280*140*25/ Y35
Basket Material	Aluminum
Net Weight	20.8 Kg.

## AD-12X302M

**Max Power**

600 W

**Voice Coil**

60.6mm 2.5"

**Sensitivity**

97 ± 2dB

**Frequency Range**

55Hz ~ 4000Hz

Nominal Diameter	12" / 310 mm
Impedance	8 Ω / 5 Ω
Power RMS	300 W
Magnet	169*80*20 / Y35
Basket Material	Aluminum
Gross Weight	4.8 Kg.

## AD-12X403M

**Max Power**

800 W

**Voice Coil**

75.8 mm / 3"

**Sensitivity**

96 ± 2dB

**Frequency Range**

55Hz ~ 3000Hz

Nominal Diameter	12" / 320 mm
Impedance	8 Ω / 6.2 Ω
Power RMS	400 W
Magnet	190*90*20 / Y35
Basket Material	Aluminum
Gross Weight	7.0 Kg.

## AD-12X507MB

**Max Power**

1000 W

**Voice Coil**

86.5 mm / 3.5"

**Sensitivity**

96 ± 2dB

**Frequency Range**

45Hz ~ 3000Hz

Nominal Diameter	12" / 320 mm
Impedance	8 Ω / 5.8 Ω
Power RMS	500 W
Magnet	190*95*20 / Y35
Basket Material	Aluminum
Gross Weight	6.1 Kg.

## AD-12X604MG

**Max Power**

1200 W

**Voice Coil**

100 mm / 4"

**Sensitivity**

97 ± 2dB

**Frequency Range**

45Hz ~ 4500Hz

Nominal Diameter	12" / 312 mm
Impedance	8 Ω / 5.6 Ω
Power RMS	600 W
Magnet	220*110*20 / Y35
Basket Material	Aluminum
Net Weight	9.4 Kg.

## AD-1580PD AVENGER

**Max Power**

3000 W

**Voice Coil**

127 mm / 5"

**Sensitivity**

96.5 ± 2dB

**Frequency Range**

40Hz ~ 3000Hz

Nominal Diameter	15" / 390 mm
Impedance	8 Ω / 6.2 Ω
Power RMS	1500 W
Magnet	280*140*25 / Y35
Basket Material	Aluminum
Gross Weight	18.3 Kg.

## AD-15X350MG

**Max Power**

700 W

**Voice Coil**

75.5mm / 3"

**Sensitivity**

96 ± 2dB

**Frequency Range**

40Hz ~ 3000Hz

Nominal Diameter	15" / 388 mm
Impedance	8 Ω / 5.6 Ω
Power RMS	350 W
Magnet	170*86*20 / Y35
Basket Material	Aluminum
Gross Weight	5.4 Kg

## AD-15X401M

**Max Power**

800 W

**Voice Coil**

75.8mm / 3"

**Sensitivity**

98 ± 2dB

**Frequency Range**

38Hz ~ 4500Hz

Nominal Diameter	15" / 393 mm
Impedance	8 Ω / 5.3 Ω
Power RMS	400 W
Magnet	190*90*20 / Y35
Basket Material	Aluminum
Gross Weight	7.6 Kg.

## AD-15X404M

**Max Power**

800 W

**Voice Coil**

75.5mm / 3"

**Sensitivity**

98 ± 2dB

**Frequency Range**

42Hz ~ 3000Hz

Nominal Diameter	15" / 388 mm
Impedance	8 Ω / 5.6 Ω
Power RMS	400 W
Magnet	190*85*20 / Y35
Basket Material	Aluminum
Net Weight	7.0 Kg.

## AD-15X508MB

**Max Power**

1000 W

**Voice Coil**

86.5mm / 3.5"

**Sensitivity**

96 ± 2dB

**Frequency Range**

40Hz ~ 2500Hz

Nominal Diameter	15" / 393 mm
Impedance	8 Ω / 5.8 Ω
Power RMS	500 W
Magnet	190*95*20 / Y35
Basket Material	Aluminum
Gross Weight	6.7 Kg.

## AD-15X600G



**Max Power**

1200 W

**Voice Coil**

100mm / 4"

**Sensitivity**

100 ± 2dB

**Frequency Range**

49Hz ~ 2800Hz

Nominal Diameter	15" / 395 mm
Impedance	8 Ω / 5.6 Ω
Power RMS	600 W
Magnet	220*110*25/Y35
Basket Material	Aluminum
Gross Weight	12.0 Kg.

## AD-1852PD CHROME



**Max Power**

4000W

**Voice Coil**

75.8mm / 3"

**Sensitivity**

98 ± 2dB

**Frequency Range**

42Hz ~ 2000Hz

Nominal Diameter	18" / 487 mm
Impedance	8Ω / 5.6Ω
Power RMS	2000 W
Magnet	190*90*20 / Y35
Basket Material	Aluminum
Gross Weight	20.1kg

## AD-1864PD AVENGER



**Max Power**

4800 W

**Voice Coil**

135mm / 5.5"

**Sensitivity**

97.5 ± 2dB

**Frequency Range**

35Hz ~ 2500Hz

Nominal Diameter	18" / 460 mm
Impedance	8 Ω / 5.8 Ω
Power RMS	2400 W
Magnet	280*140*25 / Y35
Basket Material	Aluminum
Net Weight	22.4 Kg.

## AD-1878PD AVENGER



**Max Power**

5600 W

**Voice Coil**

135mm / 5.5"

**Sensitivity**

97.5 ± 2dB

**Frequency Range**

35Hz ~ 2500Hz

Nominal Diameter	18" / 460 mm
Impedance	8 Ω / 5.8 Ω
Power RMS	2800 W
Magnet	280*140*40 / Y35
Basket Material	Aluminum
Gross Weight	24.6 Kg.

## AD-1882PD CHROME



**Max Power**

5000 W

**Voice Coil**

152mm / 6"

**Sensitivity**

96 ± 2dB

**Frequency Range**

50Hz ~ 1000Hz

Nominal Diameter	18" / 487 mm
Impedance	8 Ω / 5.2 Ω
Power RMS	2500 W
Magnet	330*170*30 / Y35
Basket Material	Aluminum
Gross Weight	28.7 Kg.

## AD-18D1500



**Max Power**

3000W

**Voice Coil**

100mm / 4"

**Sensitivity**

97 ± 2dB

**Frequency Range**

40Hz ~ 1500Hz

Nominal Diameter	18" / 476 mm
Impedance	8 Ω / 5.6 Ω
Power RMS	1500 W
Magnet	220*110*40/ Y35
Basket Material	Aluminum
Gross Weight	17.3 Kg.

## AD-18TBW100



**Max Power**

3000 W

**Voice Coil**

100mm / 4"

**Sensitivity**

96 ± 2dB

**Frequency Range**

40Hz ~ 2500Hz

Nominal Diameter	18" / 460 mm
Impedance	8 Ω / 5.2 Ω
Power RMS	1500 W
Magnet	220*110*30/ Y35
Basket Material	Aluminum
Net Weight	14.9 Kg.

## AD-18X1501S



**Max Power**

3600 W

**Voice Coil**

114.5mm / 4.5"

**Sensitivity**

98 ± 2dB

**Frequency Range**

35Hz ~ 2000Hz

Nominal Diameter	18" / 460 mm
Impedance	8 Ω / 5.4 Ω
Power RMS	1800 W
Magnet	253*140*30 / Y35
Basket Material	Aluminum
Gross Weight	17.1 Kg.

## AD-18X1000G



### Max Power

2400 W

### Voice Coil

100mm / 4"

### Sensitivity

98 ± 2dB

### Frequency Range

36Hz ~ 2000Hz

Nominal Diameter	18" / 465 mm
Impedance	8 Ω / 5.6 Ω
Power RMS	1200 W
Magnet	220*110*25/Y35
Basket Material	Aluminum
Gross Weight	12.9 Kg.

## AD-18X1505LF



### Max Power

3000 W

### Voice Coil

100mm / 4"

### Sensitivity

98 ± 2dB

### Frequency Range

35Hz ~ 2000Hz

Nominal Diameter	18" / 461 mm
Impedance	8 Ω / 5.4 Ω
Power RMS	1500 W
Magnet	220*110*25 / Y35
Basket Material	Zinc Alloy
Gross Weight	11.9 Kg.

## AD-18X2210S



### Max Power

4400 W

### Voice Coil

130 mm / 5.3"

### Sensitivity

97 ± 2dB

### Frequency Range

44Hz ~ 2000Hz

Nominal Diameter	18" / 463 mm
Impedance	8 Ω / 5.1 Ω
Power RMS	2200 W
Magnet	280*140*25 / Y35
Basket Material	Aluminum
Net Weight	20.1 Kg.

## AD-2160PD CHROME



### Max Power

5000 W

### Voice Coil

152mm / 6"

### Sensitivity

96 ± 2dB

### Frequency Range

37Hz ~ 1500Hz

Nominal Diameter	21" / 568 mm
Impedance	8 Ω / 5.4 Ω
Power RMS	2500 W
Magnet	330*170*30/ Y35
Basket Material	Aluminum
Gross Weight	30.6 Kg.

## AD-2182PD AVENGER



### Max Power

7600 W

### Voice Coil

152mm / 6"

### Sensitivity

98 ± 2dB

### Frequency Range

35Hz ~ 2000Hz

Nominal Diameter	21" / 550 mm
Impedance	8 Ω / 5.8 Ω
Power RMS	3800 W
Magnet	300*170*50 / Y35
Basket Material	Aluminum
Gross Weight	32.6 Kg.

## AD-21NW151



### Max Power

6000 W

### Voice Coil

152mm / 6"

### Sensitivity

97 ± 2dB

### Frequency Range

30Hz ~ 1500Hz

Nominal Diameter	21" / 570 mm
Impedance	8 Ω / 5.8 Ω
Power RMS	3000 W
Magnet	145*60*15 / N45
Basket Material	Aluminium
Gross Weight	21.2 Kg.

## AD-21SW152



### Max Power

6400 W

### Voice Coil

152mm / 6"

### Sensitivity

98 ± 2dB

### Frequency Range

35Hz ~ 2000Hz

Nominal Diameter	21" / 550 mm
Impedance	8 Ω / 5.3 Ω
Power RMS	3200 W
Magnet	150*50*15 / N45
Basket Material	Aluminum
Net Weight	15.2 Kg.

## AD-2184PD



### Max Power

7600 W

### Voice Coil

152mm / 6"

### Sensitivity

98 ± 2dB

### Frequency Range

35Hz ~ 2000Hz

Nominal Diameter	21" / 550 mm
Impedance	8 Ω / 5.8 Ω
Power RMS	3800 W
Magnet	300*170*50 / Y35
Basket Material	Aluminum
Gross Weight	37.8 Kg.

## 15X825G



**Max Power**

1600 W

**Voice Coil**

4 In/Out

**Sensitivity**

100dB

**Frequency Range**

35Hz ~ 2000Hz

Nominal Diameter	15" / 390 mm
Impedance	8 Ω
Power RMS	800 W
Magnet	220*110*25mm
Basket Material	Aluminum
Gross Weight	133 Kg.

## AD-1886PD Pro



**Max Power**

6000 W

**Voice Coil**

6 In/Out

**Sensitivity**

96dB

**Frequency Range**

35Hz ~ 2000Hz

Nominal Diameter	18" / 487 mm
Impedance	8 Ω
Power RMS	3000 W
Magnet	330*170*30mm
Basket Material	Aluminum
Gross Weight	32.1 Kg.

## AD-15X1150SR



**Max Power**

2300W

**Voice Coil**

4" (99.2mm)

**Sensitivity**

98±2dB

**Frequency Range**

45Hz-3kHz

Nominal Diameter	15" (393mm)
Impedance	8Ω / 5.3Ω
Power RMS	1150W
Magnet	220*110*25/Y35
Basket Material	Aluminum
Gross Weight	12.8KG

## AD-15X650M



**Max Power**

1300W

**Voice Coil**

4" (100mm)

**Sensitivity**

96

**Frequency Range**

49Hz-2kHz

Nominal Diameter	15"/395mm
Impedance	8Ω
Power RMS	650W
Magnet	220*110*25
Basket Material	Aluminum
Net Weight	12KG

## AD - 2166PD PRO

**Max Power**

6000 w

**Voice Coil**

6 In/Out

**Sensitivity**

96dB

**Frequency Range**

35Hz ~ 2000Hz

Nominal Diameter	21" / 568 mm
Impedance	8 Ω
Power RMS	3000 W
Magnet	330*170*30mm
Basket Material	Aluminum
Gross Weight	35.9 Kg.

## AD-1856PD Pro

**Max Power**

4800 W

**Voice Coil**

5 In/Out

**Sensitivity**

98dB

**Frequency Range**

35Hz ~ 2000Hz

Nominal Diameter	18" / 487 mm
Impedance	8 Ω
Power RMS	2400 W
Magnet	280*140*25mm
Basket Material	Aluminum
Gross Weight	23.6Kg.

# FERRITE DRIVER

## 750K



**Mag. Material**  
Strontium Ferrite  
Y35

**Voice Coil**  
74.5mm/ 3" CCAR

**Sensitivity**  
108±2db

**Frequency Range**  
800Hz-20KHz

Throat Diameter	50mm/ 2 Inch
Impedance	8Ω/6.2Ω
Watts (RMS)	120w

## 850K



**Mag. Material**  
Strontium Ferrite  
Y35

**Voice Coil**  
74.5mm/ 3" CCAR

**Sensitivity**  
108 ±2db

**Frequency Range**  
800Hz-20KHz

Throat Diameter	50mm/ 2 Inch
Impedance	8Ω/6.2Ω
Watts (RMS)	120w

## AD-450S



**Mag. Material**  
Strontium Ferrite  
Y35

**Voice Coil**  
44.4mm/1.75" CCAW

**Sensitivity**  
106 ± 2db

**Frequency Range**  
1.5Hz-20KHz

Throat Diameter	25mm/1 Inch
Impedance	80/60
Watts (RMS)	60w

## AD-550C



**Mag. Material**  
Strontium Ferrite  
Y35

**Voice Coil**  
51.3mm/ 2" CCAW

**Sensitivity**  
108 ± 2db

**Frequency Range**  
1.2Hz-20KHz

Throat Diameter	25.4mm/ 1 Inch
Impedance	8Ω/ 7Ω
Watts (RMS)	80w

## AD-560S

**Mag. Material**

Strontium Ferrite  
Y35

**Voice Coil**

51.3mm/2" CCAW

**Sensitivity**

108 ± 2db

**Frequency Range**

1.2Hz-20KHz

Throat Diameter	25.4mm/1 Inch
Impedance	8 Ω / 7 Ω
Watts (RMS)	80w

## AD-7245

**Mag. Material**

Strontium Ferrite  
Y35

**Voice Coil**

72.5mm/3" CCAW

**Sensitivity**

108 ± 2db

**Frequency Range**

800Hz-20KHz

Throat Diameter	50mm/2 Inch
Impedance	8 Ω / 6.2 Ω
Watts (RMS)	120w

## AD-850N

**Mag. Material**

Strontium Ferrite  
V35

**Voice Coil**

3" (74.5mm) CCAR

**Sensitivity**

108dB ±2dB

**Frequency Range**

800Hz-20kHz (±3dB)

Throat Diameter	2" (50mm)
Impedance	8Ω / 6.2Ω
Watts (RMS)	140W

## AD-551XLS

**Mag. Material**

Strontium Ferrite  
Y35

**Voice Coil**

51.3 mm / 2"

**Sensitivity**

108 ± 2dB

**Frequency Range**

800Hz ~ 16000Hz

Throat Diameter	25 mm / 1 inch
Impedance	8 Ω / 6.5 Ω
Watts (RMS)	100 W

## AD-761XLS



**Mag. Material**  
Strontium Ferrite  
Y35

**Voice Coil**  
72.5 mm / 3"

**Sensitivity**  
108 ± 2dB

**Frequency Range**  
800Hz ~ 20000Hz

Throat Diameter	50 mm / 2 inch
Impedance	8 Ω / 6 Ω
Watts (RMS)	140 W

## 751LEX



**Mag. Material**  
Strontium Ferrite  
Y35

**Voice Coil**  
72.5 mm / 3"

**Sensitivity**  
108 ± 2dB

**Frequency Range**  
800Hz ~ 20000Hz

Throat Diameter	50 mm / 2 inch
Impedance	8 Ω / 6 Ω
Watts (RMS)	140 W

## AD-7242



**Mag. Material**  
Strontium Ferrite  
Y35

**Voice Coil**  
72.5mm 3"

**Sensitivity**  
108 ± 2dB

**Frequency Range**  
800Hz ~ 20000Hz

Throat Diameter	50 mm / 2 inch
Impedance	8 Ω / 6.2 Ω
Watts (RMS)	120 W

## AD-750TN



**Mag. Material**  
Strontium Ferrite  
Y35

**Voice Coil**  
74.5mm / 3"

**Sensitivity**  
108 ± 2dB

**Frequency Range**  
800Hz ~ 20000Hz

Throat Diameter	50 mm / 2 inch
Impedance	8 Ω / 6.2 Ω
Watts (RMS)	140 W

## AD-561XLS

**Mag. Material**

Strontium Ferrite  
Y35

**Voice Coil**

51.3 mm 2"

**Sensitivity**

108 ± 2dB

**Frequency Range**

800Hz ~ 16000Hz

Throat Diameter	25 mm / 1 inch
-----------------	----------------

Impedance	8 Ω / 7 Ω
-----------	-----------

Watts (RMS)	100 W
-------------	-------

## AD-440C

**Mag. Material**

Strontium Ferrite  
Y35

**Voice Coil**

72.5 mm / 3"

**Sensitivity**

108 ± 2dB

**Frequency Range**

800Hz ~ 20000Hz

Throat Diameter	50 mm / 2 inch
-----------------	----------------

Impedance	8 Ω / 6.2 Ω
-----------	-------------

Watts (RMS)	120 W
-------------	-------

# NEODYMIUM DRIVER

## 780TN



**Diaphragm Compression  
Driver Model - 3"**

**Impedance**  
8 ohm

**Power RMS**  
120 Watts

## AD-2408H



**Mag. Material**  
Strontium Ferrite  
Y35

**Voice Coil**  
38 mm / 1.5"

**Sensitivity**  
108 ± 2dB

**Frequency Range**  
900Hz ~ 18000Hz

Throat Diameter	25 mm / 1 inch
Impedance	8 Ω / 6.2 Ω
Watts (RMS)	60 W

## ADX-D2



**Diaphragm Compression  
Driver Model - 3"**

**Impedance**  
8 ohm

**Power RMS**  
160 Watts

## AD-400TN



**Mag. Material**  
NdFeb N45

**Voice Coil**  
44.4mm / 1.75"

**Sensitivity**  
110 ± 2dB

**Frequency Range**  
800Hz ~ 16000Hz

Throat Diameter	25 mm / 1 inch
Impedance	8 Ω / 6.2 Ω
Watts (RMS)	80W

## AD-800TN



### Mag. Material

NdFeb N45

### Voice Coil

74.5mm / 3"

### Sensitivity

108 ± 2dB

### Frequency Range

800Hz ~ 20000Hz

Throat Diameter	36 mm / 1.5 inch
Impedance	8 Ω / 6.5 Ω
Watts (RMS)	140 W

# SUPER PRESSURE MID DRIVER

## AD-4599



### RMS Power

450W

### Voice Coil

89mm/3.5"

### Sensitivity

123±2dB

### Frequency Range

200Hz-9KHz

Diameter	50mm/2 Inch
----------	-------------

Impedance	8 Ω / 6.2 Ω
-----------	-------------

## AD-4599EX PRO



### Max Volume

160W/1m/35.7V  
135dB

### Voice Coil

200Hz ~ 8000Hz

### Sensitivity

2X1W/1m 123dB

### Frequency Range

200Hz ~ 8000Hz

Throat Diameter	50.8 mm / 2 inch
-----------------	------------------

Impedance	2x 16 Ω
-----------	---------

Watts (RMS)	120w
-------------	------

## AD-6599ex



**Power**  
650w

**Voice Coil**  
2x99.2mm

**Sensitivity**  
123dB

**Frequency Range**  
200-7000Hz

Diameter 2"(50.8mm)

Impedance 2x16Ω

Net weight 4.6kg

## AD-4599HD



**Power**  
450 Watt

**Impedance**  
8Ω

# AMPLIFIERS



## ADJ – 801

8Ω Stereo	2x680W	Input Impedance	20K Ω
4Ω Stereo	2x900W	Cross Talk	>90dB@1KHz
8Ω Bridge	1500W	Damping Factor	600
4Ω Bridge	1800W*	Rack Space	2U
Output Circuitry	class H	Net Weight	22.5Kg.
Frequency Respons	20-20KHz (±0.3dB)	Gross Weight	25.5KG
Input Sensitivity	0.775V/1.0V/1.4V		



## RL – 3800AD

8Ω Stereo	2x800W	Input Impedance	20K Ω
4Ω Stereo	2x1100W	Cross Talk	>90dB@1KHz
8Ω Bridge	2200W	Damping Factor	800
4Ω Bridge	2700W*	Rack Space	2U
Output Circuitry	class H	Net Weight	24Kg.
Frequency Respons	20-20KHz (±0.3dB)	Gross Weight	27.5Kg.
Input Sensitivity	0.775V/1.0V/1.4V	2Ω Stereo	2x1400W



## RL - 4600AD

8Ω Stereo	2x1000W
4Ω Stereo	2x1580W
8Ω Bridge	3110W
4Ω Bridge	3700W*
Output Circuitry	Class H
Frequency Respons	20-20KHz (±0.3dB)
Input Sensitivity	0.775V/1.0V/1.4V

Input Impedance	20K Ω
Cross Talk	>90dB@1KHz
Damping Factor	800
Rack Space	3U
Net Weight	33.5Kg.
Gross Weight	38Kg.
2Ω Stereo	2x1950W



## RL-5700AD

8Ω Stereo	2x1200W
4Ω Stereo	2x1950W
8Ω Bridge	3750W
4Ω Bridge	4650W*
Output Circuitry	class H
Frequency Respons	20-20KHz (±0.3dB)
Input Sensitivity	0.775V/1.0V/1.4V

Input Impedance	20K Ω
Cross Talk	>90dB@1KHz
Damping Factor	1000
Rack Space	3U
Net Weight	33.5Kg.
Gross Weight	38KG
2Ω Stereo	2x2400W



## RL-7000AD

8Ω Stereo	2x1450W
4Ω Stereo	2x2280W
8Ω Bridge	4500W
4Ω Bridge	5300W*
Output Circuitry	Class H
Frequency Respons	20-20KHz (±0.3dB)
Input Sensitivity	0.775V/1.0V/1.4V

Input Impedance	20K Ω
Cross Talk	>90dB@1KHz
Damping Factor	1200
Rack Space	3U
Net Weight	36Kg.
Gross Weight	40Kg.
2Ω Stereo	2x2680W



## RL-7800AD

8Ω Stereo	2x1850W
4Ω Stereo	2x2950W
8Ω Bridge	5800W
4Ω Bridge	7800W*
Output Circuitry	class H
Frequency Respons	20-20KHz (±0.3dB)
Input Sensitivity	0.775V/1.0V/1.4V

Input Impedance	20K Ω
Cross Talk	>90dB@1KHz
Damping Factor	1300
Rack Space	3U
Net Weight	44Kg.
Gross Weight	48.5KG
2Ω Stereo	2x3800W



## BDT-8800AD

8Ω Stereo	4x920W
4Ω Stereo	4x1450W
8Ω Bridge	2x1800W
4Ω Bridge	2x2800W
Output Circuitry	Class H
Frequency Respons	20– 20KHz (±0.3dB)
Input Sensitivity	0.775V/1.0V/1.4V

Input Impedance	20K Ω
Cross Talk	>90dB@1KHz
Damping Factor	800
Rack Space	2U
Net Weight	27Kg.
Gross Weight	30.5Kg.



## BDT-8800Pro

8Ω Stereo	4x920W
4Ω Stereo	4x1450W
8Ω Bridge	2x1800W*
4Ω Bridge	2800W
Output Circuitry	class H
Frequency Respons	20Hz-20KHz±0.5dB
Input Sensitivity	0.775V/1.0V/1.4V

Input Impedance	20kΩ / 10kΩ
Cross Talk	>65dB 80 1KHz
Damping Factor	>800
Rack Space	2U
Net Weight	28.5KG
Gross Weight	32KG
THD %	0.05%



## ADT-8850

8Ω Stereo	4 × 1500W
4Ω Stereo	4 × 1680W
8Ω Bridge	2 × 1950W
4Ω Bridge	2 × 3150W*
Output Circuitry	Class D/HD
Frequency Respons	20 – 20kHz (±0.3dB)
Input Sensitivity	0.775V / 26dB / 32dB

Input Impedance	20K Ω
Cross Talk	>90dB@1KHz
Damping Factor	≥700
Rack Space	2U
Net Weight	27.5 kg
THD	0.03% @ 8Ω
S/N Ratio	≥103dB



## ADMT-1602

8Ω Stereo	2x1800W
4Ω Stereo	2x2800W
8Ω Bridge	5600W
4Ω Bridge	7000W*
Output Circuitry	class H
Frequency Respons	20-20KHz+0/-1dB
Input Sensitivity	0.75V/1.0V/1.4V

Input Impedance	20K Ω
Cross Talk	≤62dB 8Ω 1KHz
Damping Factor	≥1300
Rack Space	3U
Net Weight	39.5Kg.
Gross Weight	42.5KG
2Ω Stereo	2x3500W*
THD %	0.05%@8Ω



## ADMT – 1802

8Ω Stereo	2x2200W
4Ω Stereo	2x3700W
8Ω Bridge	6400W
4Ω Bridge	8200W*
Output Circuitry	Class H
Frequency Respons	20Hz-20KHz+0/-1dB
Input Sensitivity	0.75V/1.0/1.4V

Input Impedance	20K Ω
Cross Talk	≤62dB 8Ω 1KHz
Damping Factor	≥1800
Rack Space	3U
Net Weight	39.5Kg.
THD	0.05%@8Ω
2Ω Stereo	2x4050W*
Gross Weight	42.5KG



## AD-9000

8Ω Stereo	2X2100W
4Ω Stereo	2x3850W
8Ω Bridge	4800W
4Ω Bridge	7100W*
Output Circuitry	class D/HD
Frequency Respons	20-20KHz+0/-1dB
Input Sensitivity	0.75V/1.0/1.4V

Input Impedance	20K Ω
Cross Talk	≤62dB 8Ω 1KHz
Damping Factor	≥3000
THD %	0.05%@8Ω
S/N Ratio	109 dB
Gross Weight	39 Kg
2Ω Stereo	2x5200W*



## XH-SERIES (AD-9900)

8Ω Stereo	2x2200W
4Ω Stereo	2x3900W
8Ω Bridge	5000W
4Ω Bridge	7300W*
Output Circuitry	Class D/HD
Frequency Respons	20-190HZ+0/-1dB
Input Sensitivity	0.75V/1.0/1.4V

Input Impedance	20K Ω
Cross Talk	≤62dB 8Ω 1KHz
Damping Factor	≥3500
Rack Space	3U
Gross Weight	39 Kg
THD	0.05%@8Ω
2Ω Stereo	2x5500W*



## XX 16000 AD

8Ω Stereo	2 × 4000W
4Ω Stereo	2 × 7000W
8Ω Bridge	8900W
Output Circuitry	Class D/HD
Frequency Respons	20-300KHz±0.3dB

Damping Factor	>3500
2Ω Stereo	2 × 8100W*
4Ω Bridge	14200W*



## XX-14000AD

8Ω Stereo	2 × 3200W
4Ω Stereo	2 × 6200W
8Ω Bridge	7300W
4Ω Bridge	13000W*
Output Circuitry	Class D/HD
Frequency Respons	20Hz-190KHz+0/-1dB
Input Sensitivity	0.75V/1.0/1.4V

Input Impedance	20K Ω
Cross Talk	≤92dB 8Ω 1KHz
Damping Factor	≥3500
Rack Space	3U
Gross Weight	46.1 kg
THD	0.05% @ 8 Ω
2Ω Stereo	2 × 7400W*
S/N Ratio	109 dB



## XX-12000AD

8Ω Stereo	2 × 2800W
4Ω Stereo	2 × 5600W
8Ω Bridge	6200W
4Ω Bridge	8900W*
Output Circuitry	Class D/HD
Frequency Respons	20Hz-300Hz (±0.3dB)
Input Sensitivity	0.775V / 1.0V / 1.5V

Input Impedance	20K Ω
Cross Talk	≤62dB 8Ω 1KHz
Damping Factor	≥3500
THD %	0.05% @ 8Ω
S/N Ratio	≥100dB
Gross Weight	45 kg
2Ω Stereo	2 × 6200W*
Rack Space	3U



## XX-10200AD

8Ω Stereo	2 × 2250W
4Ω Stereo	2 X 4000W
8Ω Bridge	5400W

4Ω Bridge	7500W
Output Circuitry	Class D/HD
Frequency Respons	10–300Hz /±0.3DB



## ADMT - 2202

8Ω Stereo	2 × 3200W
4Ω Stereo	2 × 4700W
8Ω Bridge	7400W

Damping Factor	≥1800
4Ω Bridge	9500W*
4Ω Stereo	2 × 5800W

# CROSSOVER



## AD-234XS

Input Connectors	XLR
Input Type	Electronically balanced/unbalanced, RF filtered
Input Impedance	Balanced >50k ohm, unbalanced >25k ohm
Max Input	>+22dBu balanced or unbalanced
CMRR	>40dB, typically >55dB at 1kHz
Output Connectors	XLR
Output Impedance	Balanced 60 ohm, unbalanced 30 ohm
Max Output	>+21dBu balanced/unbalanced into 2k ohms or greater
Bandwidth	20Hz to 20kHz, +/-0.5dB
Frequency Response	< 3 Hz to > 90 kHz, +0/-3 dB
Signal to Noise Ratio	Ref: +4 dBu, 22 kHz measurement bandwidth
Dynamic Range	> 106 dB, unweighted, any output
THD+Noise	< 0.004% at +4 dBu, 1 kHz; < 0.04% at +20 dBu, 1 kHz
Crossover Frequencies	Low/Mid: 45 to 960 Hz or 450 Hz to 9.6 kHz (x10 setting); Low/High: 45 to 960 Hz or 450 Hz to 9.6 kHz (x10 setting); Mid/High 450Hz to 9.6kHz (x10 setting)
Operating Voltage	230 VAC 50/60Hz
Net Weight	1.8 Kg.
Gross Weight	2.6 Kg.



## AD-201DiSi

2 In / 10 Out Distribution	Input Imp: 50kΩ(Bal), 25kΩ(unbal)
Stereo/Mono Input Option	Output Imp: 220Ω(Unbal)
Individual Output Gain Control	Freq Responce: 0.35Hz-220Hz (+0/-3dB)
XLR/TRS Combo Inputs	SNR: >100Bu(22Hz-22kHz)
XLR/TRS Combo Outputs	THD:0.04%@4dBu,1kHz
Ultra-Low Harmonic Distortion	



## SR462-AD

Dual 31 Band Graphic Equalizer	1/3 Octave Bandwidth EQ Bypass switch
Subwoofer Output With Crossover	Range +12 dB or +6 dB select Option
Constant "Q" design	18 dB / octave Highpass Filter
20 Hz – 20 kHz Full band support	Signal / Clip indicator
1/3 Octave Bandwidth	
Balanced XLR - TRS input	



## AD260

Input Imp.	40k Ohm	Dynamic Range	10 dB / >107dB
Frequency	20Hz - 20kHz, +/-0.5	Max Input	+30dBu+30 Position
Max Output	+22dBu		



## SR - 430QX

Dual 15-Band EQ	<ul style="list-style-type: none"> <li>• 20mm faders</li> <li>• Input Impedance: 40k<math>\Omega</math> (Bal), 20k<math>\Omega</math> (Unbal)</li> <li>• Max Output: +21 dBu (Bal/Unbal)</li> <li>• THD: 0.006% @1kHz</li> <li>• S/N Ratio: &gt;90 dB (ref. 0.0775Vrms)</li> <li>• Switching: FET In/Out &amp; Filter</li> </ul>
• Constant Q Design	
• 50Hz Low-Cut, 12dB/Oct	
• Balanced XLR In/Out lass="yoast-text-mark" />> Balanced 1/4In, Impedance-Balanced Out	
• ISO 2/3 Octave Centers	

# DJ MIXER



DDJ-3

## FEATURES

- Replaceable crossfader with reverse and normal slope controls
- Two switchable phono/line inputs plus one more dedicated line input giving a total of 5 inputs
- Master and Booth Outputs and three band EQ on each channel
- Balanced XLR and Unbalanced RCA Outputs
- USB 2.0 in USB version

## FEATURES

- 6 MONO and XLR inputs and 2 stereo inputs
- Selectable 48V phantom power supply in each channel
- Equipped with PAD and MUTE button in each channel
- High, Mid, Low EQ adjustments in each channel
- Two AUX output
- 7 bands EQ in stereo main output
- Multi-functional Mp3
- Equipped with High and Low EQ adjustments in Mp3
- Built-in Soundcard function with PC & Phone recording
- 32 BIT effector with 24 kinds of DSP + Analog Effect
- Equip with EQ IN to turn On/Off to main output
- 60 mm fader
- FX to AUX



RA-8



## M5 PRO

### FEATURES

- Three channels with three-band rotary EQ and gain controls
- Phono/line and switchable RCA inputs for connecting CD players, digital music players, and turntables
- 1/4"(6.3mm)microphone input for performing,MCing, and making announcements
- 1/4"(6.3 mm)stereo headphone output for cueing and auditioning mixes
- Mic channel with dedicated two-band rotary EQ and gain controls
- Stereo RCA outputs to connect an amplifier, powered speakers, or another mixer
- Six-segment LED display for real-time visual monitoring
- PFL control for toggling between master and PFL metering
- Replaceable crossfader with reverse and slope controls
- XLR Balanced Stereo output for Professional Amplifier, Powered speaker, Another Mixer

### FEATURES

- 10 MONO and XLR inputs and 2 stereo inputs
- High, Mid, Low EQ adjustments in each channel
- Two AUX output
- 7 bands EQ in stereo main output
- Multi-functional Mp3
- 60 mm fader
- Built-in Soundcard function with PC & Phone recording
- Selectable 48V phantom power supply in each channel
- Equipped with PAD and MUTE button in each channel
- Equipped with High and Low EQ adjustments in Mp3
- 32 BIT effector with 24 kinds of DSP + Analog Effect
- Equip with EQ IN to turn On/Off to main output



## RA-12

## FEATURES

●	14 MONO and XLR inputs and 2 stereo inputs
●	High, Mid, Low EQ adjustments in each channel Two AUX output
●	7 bands EQ in stereo main output Multi-functional Mp3
●	60 mm fader
●	Built-in Soundcard function with PC & Phone recording
●	Selectable 48V phantom power supply in each channel
●	Equipped with PAD and MUTE button in each channel
●	Equipped with High and Low EQ adjustments in Mp3 32 BIT effector with 24 kinds of DSP + Analog Effect
●	Equip with EQ IN to turn On/Off to main output



**RA-16**



**EXENT-16AD**

## FEATURES

●	12 MONO and XLR inputs, 4 stereo inputs.
●	Each output signal strength with LED display
●	With PAD/LOW CUT button on each channel.
●	Freestanding 48V power switch on each channel.
●	With FREQ function adjustments on each channel
●	MUTE button with LED display on each channel.
●	Monitor button with LED display on each channel. Double 99 DSP effectors
●	100 MM fader:
●	ST input channels with three segments EQ adjustments and gain control.
●	Eight AUX outputs (With PRE / POSRT FADER selection).
●	One of ST channel's signal can be sent to AUX outputs.
●	FX TO AUX.
●	AUX outputs with LED display.
●	With soundcard function OTG port, connect with PC or PHONE.
●	MP3 player with bluetooth and recording function.
●	Stereo output and four group outputs.
●	Side panel with LED display.

## FEATURES

- 20 MONO and XLR inputs, 4 stereo inputs.
- Each output signal strength with LED display.
- With PAD/LOW CUT button on each channel.
- Freestanding 48V power switch on each channel.
- With FREQ function adjustments on each channel.
- MUTE button with LED display on each channel.
- Monitor button with LED display on each channel
- Double 99 DSP effectors.
- 100 MM fader
- ST input channels with three segments EQ adjustments and gain control.
- Eight AUX outputs(With PRE /POST FADER selection).
- One of ST channel's signal can be sent to AUX outputs
- FX TO AUX.
- AUX outputs with LED display.
- With soundcard function OTG port ,connect with PC or PHONE
- MP3 player with bluetooth and recording function
- Stereo output and four group outputs.
- Side panel with LED display.



**EXENT-24AD**

## FEATURES

- Number of Channels- 6
- Product Dimensions- 7D x 22.7W x 24.5H Centimeters
- Item Weight - 1.65 Kilograms
- Connectivity Technology- Auxiliary, Bluetooth, USB
- Power Source- Coded Electric
- Versatile 6-Channel Audio Mixer : Mix 4 mono mic /XLR/line inputs + 2 stereo channel—perfect as a compact DJ mixer, small studio mixer, or for live sound setups.
- Bluetooth & MP3 Integration : Stream audio wirelessly from smartphones or play MP3s via USB—ideal for any digital audio player or portable DJ console.
- 99 Built-in DSP Effects : Customize your sound with 99 digital effects—enhance vocals, instruments, or DJ sets with studio-grade audio processing.
- 48V Phantom Power for Mics :Power condenser micro -phones with built-in phantom power—great for podcasting, live vocals, and professional studio recording.
- USB & PC Recording Support : Record sessions directly to USB drives or your computer—use it as a sound card audio interface for recording studio quality.



**PXR-6AD**

# M6 USB



## FEATURES

- Four input channels, each with gain, three-band EQ, and LED metering USB Computer connection for playing and recording with Mac or PC
- Play music from music-player software
- Record your mix to your computer
- Multiple phono, line, and mic inputs
- Dedicated XLR mic channel and additional mic input on channel 4
- Replaceable crossfader with slope control
- Assign any channel to either side of the crossfader
- Class Compliant: this product is immediately compatible with every current and future
- Version of Mac OS X and iOS and with Windows (98SE and up) operating systems.



## ATOM - 4

### FEATURES

•	KEY FEATURES :&amp;amp;amp;amp;amp;amp;amp;amp;lt;br />DUAL
•	BLUETOOTH CONNECTIVITY: The ATOM 4 comes equipped with dual Bluetooth, allowing users to connect two devices simultaneously and mix music wirelessly from smartphones, tablets, or other Bluetooth-enabled devices
•	.4-CHANNEL MIXER: Each channel has individual faders, EQ controls (low, mid, high), and gain knobs, allowing for detailed mixing of multiple sound sources.
•	USB INPUTS: The crossfader features assignable channels and includes slope adjustment for customizing the transition between tracks.
•	MULTIPLE INPUT TYPES: The ATOM 4 supports multiple RCA inputs for connecting external audio devices such as turntables or CD players.&lt;br /&gt;DEDICATED SUBWOOFER CONTROL:<br class="yoast-text-mark" />>On the master output section, there is a subwoofer control knob, enabling direct tuning and gain control over the subwoofer output for enhanced bass performance.
•	BALANCED OUTPUTS: >The mixer provides balanced XLR outputs, ensuring clean audio transmission to speakers, which is crucial for professional use. CUE AND HEADPHONE MONITORING: Headphone monitoring options are available with mix/split cue functionality, allowing DJs to preview specific channels in advance of mixing.
•	CROSSFADER: Three USB inputs allow for direct integration with digital devices such as laptops, USB drives, or MIDI controllers.<br /&gt;XLR MICROPHONE INPUTS:<br /&gt;The ATOM 4 includes at least one XLR microphone input for high-quality vocal or announcement integration.

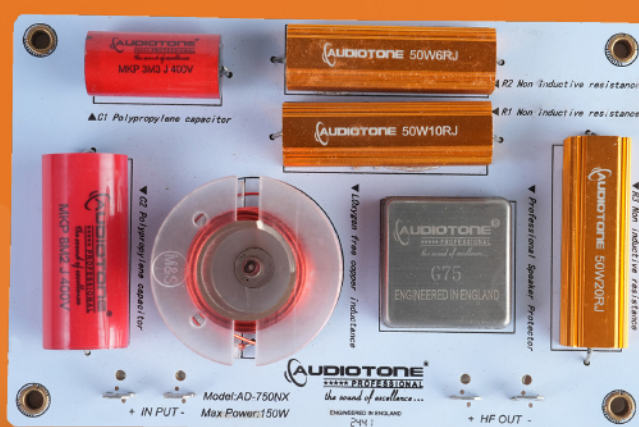
# NETWORK



## AD-450NW

General Information	1-Way
Output Impedance	8 Ω / 4 Ω
Crossover Frequency	3000 Hz
Slope	12dB / Oct

RMS Power	100 W
Suitable for HF	1 inch, 1.4 inch
Dimensions	100*160*30 mm
Weight	0.199 Kg



## AD-750NX

General Information	1-Way
Output Impedance	8 Ω / 4 Ω
Crossover Frequency	2500 Hz
Slope	12dB / Oct

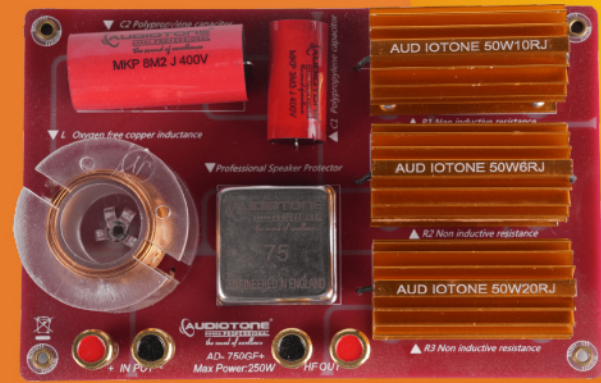
RMS Power	150 W
Suitable for HF	1.4 inch, 2 inch
Dimensions	100*160*30 mm
Weight	0.199 Kg



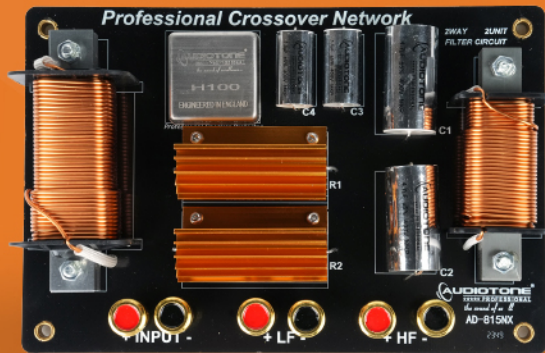
**450 GF+**

2-way passive crossover network  
 Max Power Handling: 150W  
 Compatibility: Suitable for 8 ohms HF drivers only  
 Filtering: 18 dB/Octave slope on HF  
 Features: Includes professional protection circuitry for the high-frequency component  
 Key Components Visible  
 C1 & C2: Polypropylene capacitors (8.2uF/400V) and C1 (3.3uF/400V)  
 L: Oxygen-free copper inductance (0.32mH)  
 R1 (50W10RJ), R2 (50W20RJ), and R3 (50W6RJ)  
 Protection: Professional speaker protector circuitry

Type: 1-Way Passive Crossover Network  
 Max Power Handling: 250W  
 Impedance: Suitable for 8 Ohm HF drivers only  
 Slope: 18 dB/Octave slope on HF  
 Features:  
 Professional protection circuit for the HF driver  
 Uses C2 Polypropylene capacitors (8.2uF/400V) and C1 (3.3uF/400V)  
 Features an oxygen-free copper inductor (0.32mH)  
 Includes non-inductive resistances R1 (50W10RJ), R2 (50W20RJ), and R3 (50W6RJ)



**750GF+**



**AD - 815NX**

Crossover Network	2-Way
Output Impedance	8Ω / 4Ω

RMS Power	150W
Crossover Frequency	2500 Hz
Octave Slope	2dB

# MICROPHONES



## UHF-450AD

Mute control	Noise Lock
Frequency Response	80Hz 18kHz
Frequency Stability	+/- 0.006%
S/N Ratio	>97dB
Total Harmonic Distor	< 0.02 % @ 1 kHz

Receiving Sensitivity	-80dBm
Operating range	100 meter
Resonance Interference Rate	54 dB
False Image Interference Rate	80dB



## UHF-600AD

Carrier Frequency	UHF 440-960MHz
Channels Total	200
Oscillation Mode	IC
T.H.D	<0.5%
Sensitivity	2.0uV
Frequency	35Hz-20KHz±3dB
S/N Ratio	>90dB
Operation Distance	>100m
Power Supply	DC14-22V 500mA
Audio Output Jack	1*6.3mm/2*XLR

Receiver Type	Antenna Diversity
size	210*206*48mm
Transmission Power	10mW or 5mW
Modulation Mode	IC
Battery Type	2*AA
Spurious Rejection	>50dB
Frequency Response	60Hz-15KHz±3dB
Product Size	φ52*245mm
S/N Ratio	>90dB
Dynamic Range	>110dB



## UHF-950AD

Carrier Frequency	UHF 440-960MHz
Channels Total	200
Oscillation Mode	IC
T.H.D	<0.5%
Sensitivity	2.0uV
Frequency	35Hz-20KHz
S/N Ratio	>90dB
Operation Distance	200m
Power Supply	DC14-18V 500mA
Audio Output Jack	1*6.3mm/2*XLR

Receiver Type	Antenna Diversity
Size	420*190*43mm
Transmission Power	10mW or 5mW
Modulation Mode	IC
Battery Type	2*AA
Spurious Rejection	>50dB
Frequency Response	<75KHz
Product Size	φ55*258mm/φ49.5*255mm
S/N Ratio	>90dB
Dynamic Range	>100dB

# LINE ARRAY



## AD-12X3LA

Maximum SPL	132dB peak
Frequency Response	45Hz-20kHz (±3dB)
Power Handling	1600W RMS
Sensitivity	99dB (1W/1m)
Nominal Impedance	4Ω (Passive)
LF Drivers	2×12" Neodymium
HF Drivers	2×3" Titanium Diaphragm
Dimensions (H×W×D)	900×360×450mm

Finish	Textured Polyurea Coating
Enclosure Material	Baltic Birch Plywood
Net Weight	36.8kg (81 lbs)
Gross Weight	39.9kg (88 lbs)
Rigging	Integrated Flyware Points
Input	Dual Neutrik NLA4MPR SpeakON
Output	Loop-Through SpeakON



## ADX-20

Maximum SPL	132dB peak
Response	45Hz-18kHz (±3dB)
Peak Power	950W RMS
Coverage Pattern	100° (H) × 15° (V)
Compression Driver	2" (3.0" voice coil)
Crossover	1800Hz bi-amp
DSP Controls	Cluster, HF Curve
Limiter Type	Soft Clipping

Width	705mm (27.7")
Depth	445mm (17.5")
Height	294mm (11.5")
Weight	29kg (64lbs)
Cabinet Material	Sound-Grade
Power Supply	1200W Switching
HF Amplifier	Class D (200W)
LF Amplifier	Class D (1000W)
Protection	Thermal / RMS Limiters

# PA SYSTEMS



## STM15PRO-AD

Woofer	15" (75mm Voice Coil)
RMS Power	2200W
Frequency Response	40Hz-20kHz (±3dB)
Impedance	4Ω
Sensitivity	98dB (1W/1m)
DSP Controls	EQ, Delay, Limiter, Crossover
Inputs	1/4" Line
Output	XLR Mix Out

Physical Dimensions	780×475×470mm
Net Weight	22.5 kg
Gross Weight	25.05 kg
Enclosure	PP Plastic composite
Included Accessories	Power Cable
User Manual	Optional Flying Hardware
Wireless	Bluetooth 5.0



## STM15-AD

Woofer	15" (75mm Voice Coil)
RMS Power	2000W
Frequency Response	45Hz-18kHz (±3dB)
Impedance	4Ω
Sensitivity	97dB (1W/1m)
DSP Controls	EQ, Delay, Limiter
Inputs	1/4" Line
Output	XLR Mix Out

Physical Dimensions	780×475×470mm
Net Weight	24 kg
Gross Weight	27.04 kg
Enclosure	PP Plastic composite
Included Accessories	Power Cable
	User Manual
	Optional Flying Hardware
Wireless	Bluetooth 5.0

## VOICE COILS



**SUPERIOR QUALITY & ATTRACTIVE PRICE**

**Largest range in India over  
150 Models (25mm - 178mm)**

**100% original & imported voice coils**

**Suitable for higher wattage Speakers**

**Heat Resistance Raw material Used**

As we all know Voice Coils are how important part in a loudspeaker's, but here in Audiotone we are take it very seriously. Why because we have dedicated R&D team with well-equipped modern technology for designing application oriented solutions, continuous testing & analysis which we earned in various years of distribution across the nation.

## RECONE KITS



We believe customers relationship in top priority. We ensure timely delivery of Recone kits (Voice Coils, Spiders, Paper Cones etc.) after sales service with immediate replacements.

## DIAPHRAGMS



**Largest Range in India over  
42 Models (25mm to 99mm)**

**100% original & imported Diaphragms**

**Suitable for higher wattage HF Units**

Diaphragms are most complex part in HF compression driver, so we are very strict about quality of diaphragms materials such as voice coil wire, former temperature bearing capacity and high grade titanium or beryllium, to serve subsistence option as good original components for after market demands.



At Audiotone, our experienced team of designers places a high value on technical excellence, product reliability, and consistent electro-acoustical functionality. With 32 years of inspired and deliberate engineering, we have earned nationwide acclaim, particularly from the Indian sound rental community. Our commitment to performance and quality control is unwavering.

Specializing in audio components, especially loudspeaker design and distribution, Audiotone performs most of its engineering and development work in England. Our dedication to quality has established us as the premier choice for state-of-the-art high-end transducers.


We never compromise on product or sound quality, remaining steadfast in our pursuit of perfection. Audiotone is renowned for its commitment to excellence, allowing us to maintain our leading position in the audio industry.

---

### WARNING

In the market spurious /Duplicate sub-standard Amplifiers, Microphones, H.F Drivers, Speakers, Diaphragms and Voice Coils are being passed off as **GENUINE AUDIOTONE PRODUCTS**

### BE VERY CAREFUL

- Obtain your requirements from AUTHORISED AUDIOTONE DEALERS & DISTRIBUTORS only.
- Insist on seeing the AUTHORISED DEALER CERTIFICATE &  'TRADE MARK'.
- Manufacture & sale of Spurious/Duplicate Products is illegal & Punishable under law.

---

Rampura Road, Dadabari, Sanganer, Jaipur - 302029 (India)  
[info@audiotone.co.in](mailto:info@audiotone.co.in), [www.audiotone.co.in](http://www.audiotone.co.in)

Scan to download  
product catalog



Authorized Dealer